

**ROYAL GOVERNMENT OF BHUTAN
GEWOG ADMINISTRATION
SHOMPANGKHA
BIDDING DOCUMENT**



Name of work:- *Maintenance of Gewog Office at Dargaythang Chewog under Shompangkha Gewog*

Opening date:- 12/11/2019 Time:-11:00 AM, Venue:- Gewog Hall, Shompangkha Gewog

PREFACE

This Standard Bidding Document for the Procurement of small works up to Nu. 5 million has been prepared by the Government Procurement and Property Management Division (GPPMD), Ministry of Finance to be used for the Procurement of small works through National Competitive Bidding (NCB) in projects that are financed in whole or in part by the Royal Government of Bhutan (RGoB). It should be used in conjunction with the Procurement Rules and Regulations. This document will come into effect from 1st July, 2019.

For any comments or clarifications on this standard bidding document contact:

Government Procurement and Property Management Division
Department of National Properties
Ministry of Finance
Royal Government of Bhutan



དཔལ་ལྷན་འབྲུག་གཞུང་།
 གཞི་ལོག་བདག་སྐྱོང་གཞིམ་སྤང་ཁ།
 ROYAL GOVERNMENT OF BHUTAN
 GEWOG ADMINISTRATION, SHOMPANGKHA
 SARPANG BHUTAN



Administrative Section

Ref no:SG/GADM-01/2019-2020/130

7th Oct 2019

OPEN TENDER BIDDING

The geog Administration Shompangkha, Sarpang is pleased to invite sealed rates from the interested national contractors having valid trade license and registered with Construction Development Board for the following works.

| Sl. No | Name of Work | Available date on website | Date of submission | Class of contract | Estimated amount | EMD (Nu) | Contract duration. |
|--------|--|---------------------------|--------------------|-------------------|------------------|----------|--------------------|
| 01. | Maintenance of Geog Office at Dargaythang Chiwog under Shompangkha Geog. | 10/10/2019 | 12/11/2019 | Small | 3042820.11 | 60856.40 | 7 months |

A complete set of tender document can be downloaded from Sarpang Dzongkhag website with effect from **10/10/2019**. Earnest money (EMD) should be in the form Bankers certified cheques, Demand Draft, Cash warrant, Bank Guarantee in favor of Gup, Geog Administration, Shompangkha. Electronic bids shall not be permitted and late bids shall be rejected. Bidders are requested to check the url www.sarpang.gov.bt from time to time for any amendments related to above works

Bid shall be submitted on or before **10:30 AM on 12/11/2019** and the tender will be opened on the same day at **11:00 AM** in the Geog Meeting Hall Shompangkha. Interested bidders are requested to attend the bid opening.

S.D.Yonzan
 Gup
 Shompangkha Geog
 (Chairman, Shompangkha)

Gup-17756483, Mangmi-17260581, Engineer- 17732141, GAO-17689967, Geydrung-17962495, AEO-17808891, GLO-17616383/17615527/, GFO-17668355, Technician-17711058, CC-17402482, Caretaker-77334071

Guidance Notes on the Use of the Standard Bidding Document for small works (*This note should be deleted while preparing the bidding document*)

This guidance notes have been prepared by the GPPMD to assist a Procuring Agency in the preparation and using of Standard Bidding Document (SBD), for the procurement of small works. The Procuring Agency should also refer to the Procurement Rules and Regulations and the circulars and Notifications issued from time to time to supplement the Regulations.

The use of SBD applies for the Open bidding method and also for the limited bidding method, whereby bids are invited from a list of bidders. The SBD small work should only be used for Contracts of short duration and of low risk/value.

This SBD has 9 Sections, of which Section 1: (Instruction to Bidders) and Section 5: (General Conditions of Contract) must not be altered or modified under any circumstances.

The Procuring Agency shall address specific needs through the **Bidding Data Sheet (BDS)** and the **Special Conditions of Contract (SCC)**, as well as in the detailed requirements of the procurement in the **Schedule of Works** and/or the **Drawings/specifications**.

The following briefly describes the Sections of SBD and how a Procuring Agency should use these when preparing a particular Bidding Document.

Section 1. Instructions to Bidders (ITB)

This Section provides relevant information to help Bidders prepare their Bids. Information is also provided on the submission, opening, and evaluation of Bids and on the award of Contract.

This Section also contains the criteria to be used by the Employer in order to determine the lowest evaluated Bid and the qualifications of the Bidder to perform the Contract. **The text of the clauses in this Section shall not be modified.**

Section 2. Bidding Data Sheet (BDS)

This Section consists of provisions that are specific to each procurement and supplements information or requirements included in Section 1: Instructions to Bidders.

Section 3. Evaluation and Qualification Criteria

This section contains all the criteria that the Employer shall use to evaluate bids and qualify Bidders if the bidding was not preceded by a prequalification exercise and post qualifications are applied. The Bidder shall provide all the information requested in the forms included in Section 4 (Bidding Forms).

Section 4. Bidding forms

This Section provides the standard format for the **Bid Form, Bid Securing Declaration and qualification information forms** that are to be submitted by the Bidder.

Section 5. General Conditions of Contract (GCC)

This Section provides the General Conditions of Contract that will apply to the Contract for which the Bidding Document is issued. **The text of the clauses in this Section shall not be modified.**

Section 6. Special Conditions of Contract (SCC)

This Section provides clauses specific to the Special Conditions to a particular Contract. This can be modified according to requirements specific to the contract.

Section 7. Contract Forms

This section contains forms which, once completed, will form part of the Contract. The forms for Performance Security and Advance Payment Security, when required, shall only be completed by the successful Bidder after Contract award.

Section 8. Bill of Quantities

This Section provides the items and estimated quantities of Works and Related Services to be performed, as well as the detailed Technical Specifications that describe the Works to be procured and must be carefully prepared by a Procuring Agency for each procurement.

Section 9. Drawings

This Section contains any Drawings that supplement the Schedule of Works Including Specifications for the Works and Related Services to be procured.

ROYAL GOVERNMENT OF BHUTAN

..... PROJECT

INVITATIONS FOR BIDS (IFB)

(Required in case of open tender)

NATIONAL COMPETITIVE BIDDING

Date:

Bid No.:

1. The *[insert complete name of Employer]* invites bids for *(insert the brief description of the works)*.
2. Bidding documents may be purchased from the office of fromto....., for a non-refundable fee of Nu. in the form of cash or Demand Draft in favour of..... Interested bidders may obtain further information at the same address. The bidding documents may be downloaded free of cost from the purchaser's website *(insert the name of website)*.
3. Bids must be accompanied by a bid securing declaration. The bid securing declaration shall have to be valid for 30 days beyond the validity of the bid.
4. Bids must be delivered to..... On or before hours on..... (Date) and will be opened on the same day at..... Hours, in the presence of the bidders who wish to attend.

GEWOG ADMINISTRATION
SHOMPANGKHA
SARPANG

CONTENTS

| | |
|--|----------|
| Invitation For Bid (IFB)..... | v |
| Section 1: Instructions to Bidder (ITB)..... | 1 |
| A. General..... | 1 |
| 1. Scope of Tender | 1 |
| 2. Corrupt Fraudulent Collusive or Coercive Practices..... | 1 |
| 3. Eligible Bidders..... | 2 |
| 4. Site Visit | 2 |
| B. Content of Bidding Document | 2 |
| 5. Contents of Bidding Documents | 2 |
| 6. Clarification of Bidding Documents | 3 |
| 7. Amendment of Bidding Documents | 3 |
| C. Preparation of Bids | 3 |
| 8. One Bid per Bidder..... | 3 |
| 9. Bid Preparation Costs..... | 3 |
| 10. Language of Bid | 3 |
| 11. Documents comprising the Bid | 3 |
| 12. Form of Bid..... | 4 |
| 13. Alternative Bid | 4 |
| 14. Bid Price and Discount..... | 4 |
| 15. Currencies of Bid and Payment | 4 |
| 16. Documents comprising the Technical Proposal..... | 4 |
| 17. Documents establishing the Qualification of the Bidder | 4 |
| 18. Bid Validity..... | 5 |
| 19. Bid Securing Declaration..... | 5 |
| 20. Format and Signing of Bid | 5 |
| D. Submission and Opening of Bids | 6 |
| 21. Sealing and Marking of Bids | 6 |
| 22. Bid Submission Deadline..... | 6 |
| 23. Late Bids | 6 |
| 24. Modification, Substitution or Withdrawal of Bids | 6 |
| 25. Bid Opening | 6 |
| E. Tender Opening and Evaluation | 7 |
| 26. Confidentiality..... | 7 |
| 27. Clarification | 7 |
| 28. Bidder Contacting the Employer | 7 |
| 29. Determination of Responsiveness | 7 |
| 30. Non Conformities, Errors and Omissions..... | 8 |
| 31. Evaluation of Bids..... | 8 |
| 32. Abnormally Low Bids | 9 |
| 33. Seriously unbalanced Bids or Front Loaded | 9 |
| 34. Employer's Right to Accept or Reject any or all | 10 |
| F. Contract Award | 10 |
| 35. Award Criteria..... | 10 |

| | |
|--|-----------|
| 36. Letter of Intent to Award the Contract/ Letter of Acceptance | 10 |
| 37. Debriefing by Employer | 11 |
| 38. Complaints | 11 |
| Section 2 - Bidding Data Sheet | 12 |
| G. General..... | 12 |
| H. Bidding Documents..... | 12 |
| I. Preparation of Bids | 12 |
| J. Submission and Opening of Bids | 12 |
| K. Award of Contract | 13 |
| Section 3 – Evaluation and Qualification Criteria | 14 |
| Section 4: Bidding Forms | 15 |
| Standard Form: Form of Bid..... | 16 |
| Form of Bid-Securing Declaration | 17 |
| Standard Form: Qualification Information | 188 |
| Standard Form: Letter of Intent | 21 |
| Section 5. General Conditions of Contract..... | 22 |
| 1. Definitions | 22 |
| 2. Interpretation & Documents forming the Contract | 23 |
| 3. Corrupt, Fraudulent, Collusive or Coercive Practices..... | 23 |
| 4. Governing Language and Law..... | 24 |
| 5. Engineer's Decision..... | 24 |
| 6. Delegation | 24 |
| 7. Communications and Notices | 24 |
| 8. Sub- Contracting | 24 |
| 9. Contractor's Personnel & Equipment..... | 24 |
| 10. Welfare of Labourers & Child Labour..... | 25 |
| 11. Safety, Security and Protection of the Environment | 25 |
| 12. Access to the Site..... | 25 |
| 13. Documents & Information. | 25 |
| 14. Property..... | 25 |
| 15. Insurance | 25 |
| 16. Possession of the Site | 26 |
| 17. Commencement of Works | 26 |
| 18. Completion of Works | 26 |
| 19. Programme of Works..... | 26 |
| 20. Early Warning..... | 26 |
| 21. Compensation Events | 26 |
| 22. Non-Scheduled Items of Works | 27 |
| 23. Schedule of Works | 27 |
| 24. Payment Certificates | 27 |
| 25. Payments | 27 |
| 26. Changes in Quantities ¹⁰ | 28 |
| 27. Variations..... | 29 |
| 28. Retention..... | 30 |
| 29. Liquidated Damages..... | 30 |
| 30. Performance Security | 30 |

| | |
|--|-----------|
| 31. Price Adjustment | 30 |
| 32. Completion | 31 |
| 33. Correction of Defects..... | 31 |
| 34. Taking Over | 31 |
| 35. Final Account..... | 32 |
| 36. Termination..... | 32 |
| 37. Payment upon Termination | 33 |
| 38. Release from Performance..... | 33 |
| 39. Force Majeure | 33 |
| 40. Settlement of Disputes | 34 |
| Section 6. Special Conditions of Contract | 35 |
| Section 7 – Contract Forms..... | 37 |
| Letter Of Acceptance..... | 38 |
| Contract Agreement | 39 |
| Bank Guarantee For Performance Security..... | 40 |
| Performance Guarantee No: | 40 |
| Bank Guarantee For Mobilisation Advance | 41 |
| Advance Payment Guarantee No:..... | 41 |
| Section 8. Bill of Quantities (BoQ) | 42 |
| Section 9. Drawings | 43 |

GEWOG ADMINISTRATION

SHOMPANGKHA

SARPANG

SECTION 1: INSTRUCTIONS TO BIDDER (ITB)

A. General

1. Scope of Tender
 - 1.1. The Employer, as **indicated in the BDS** issues this Bidding Document for the procurement of Works. The name, identification and identification of this bidding are **provided in the BDS**.
 - 1.2. The successful Bidder will be required to complete the Works within the Time for Completion stated in the Special Conditions of Contract (SCC).
 - 1.3. Throughout this Bidding Documents;
 - (a) The term “in writing means communicated in written form with proof of receipt;
 - (b) If the context so requires, singular means plural and vice versa; and
 - (c) “day” means calendar day.
 2. Corrupt, Fraudulent, Collusive or Coercive Practices
 - 2.1. The Royal Government of Bhutan requires that Employers and the Bidders shall observe the highest standard of ethics during the implementation of procurement proceedings and the execution of Contracts under public money.
 - 2.2. In pursuance of this requirement, the Employer shall
 - (a) exclude the bidder from participation in the procurement proceeding concerned or reject a proposal for award; and
 - (b) declare a bidder ineligible, either indefinitely or for a stated period of time, from participation in procurement proceedings under public money;

If it, at any time, determines that the bidder has engaged in corrupt, fraudulent, collusive or coercive practices in competing for, or in executing, a Contract under the public money.
 - 2.3. The Government defines, for the purposes of this provision, the terms set forth below as follows :
 - (a) **“corrupt practice”** is the offering, giving, receiving or soliciting, directly or indirectly, of anything of value to influence improperly the actions of another party;
-

- (b) **“fraudulent practice”**² is any intentional act or omission including misrepresentation, that knowingly or recklessly misleads, or attempts to mislead, a party to obtain a financial or other benefits or to avoid an obligation;
- (c) **“collusive practice”**³ is an arrangement between two or more parties designed to achieve an improper purpose, including to influence improperly the actions of another party;
- (d) **“Coercive practice”**⁴ is impairing or harming or threatening to impair or harm, directly or indirectly, any party or the property of the party to influence improperly the actions of a party.

2.4. The bidder shall be aware of the provisions on fraud and corruption stated in GCC Clause 3 and GCC Sub-Clause 36.2(d).

2.5. The RGoB requires that the Employer’s personnel have an equal obligation not to solicit, ask for and/or use coercive methods to obtain personal benefits in connection with the said proceedings.

3. Eligible Bidders 3.1. Bidders of the categories **specified in the BDS** are eligible to participate in this bidding process.

4. Site Visit 4.1. The Bidders, at their own responsibility and risk, is encouraged to visit and examine the Site and obtain all information that may be necessary for preparing the bid and entering into a Contract for performance of the Works. The costs of visiting the Site shall be at the bidder’s own expense.

B. Content of Bidding Document

5. Contents of Bidding Documents 5.1. The sections comprising the Bidding Document are listed below and should be read in conjunction with any amendment issued in accordance with ITB Clause 7:

PART 1 Bidding Procedures

- Section 1: Instructions to Bidders (ITB)
- Section 2: Bidding Data Sheet (BDS)
- Section 3: Evaluation and Qualification Criteria
- Section 4: Bidding forms
- Section 5: General Conditions of Contract (GCC)
- Section 6: Special Conditions of Contract (SCC)
- Section 7: Contract Forms
- Section 8: Bill of Quantities & Specifications
- Section 9: Drawings

- 5.2. The Employer is not responsible for the completeness of the Bidding Document and any addendum, if they were not obtained directly from the source stated by the Employer in the Invitation for Bids.
- 5.3. The Bidder is expected to examine all instructions, forms, terms, and specifications in the Bidding Documents. Failure to furnish all information or documentation required by the Bidding Documents may result in the rejection of the bid.
6. Clarification of Bidding Documents
- 6.1. A prospective Bidder requiring any clarification of the Bidding Document shall contact the Employer in writing at the Employer's address **indicated in the BDS**.
7. Amendment of Bidding Documents
- 7.1. At any time prior to the deadline for submission of Bid, the Employer may amend the Bidding Document by issuing addenda and extend the deadline for the submission of bids at its discretion. Any amendment issued shall become an integral part of the Bidding Document and shall be communicated in writing to all those who have purchased the Bidding Document.

C. Preparation of Bids

8. One Bid per Bidder
- 8.1. A Bidder shall submit only one (1) Bid. A Bidder who submits or participates in more than one (1) Bid shall cause all the proposals with the Bidder's participation to be disqualified.
9. Bid Preparation Costs
- 9.1. The Bidder shall bear all costs associated with the preparation and submission of its Bids, and the Employer shall in no case be responsible or liable for those costs, regardless of the conduct or outcome of the Bidding process.
10. Language of Bid
- 10.1. All documents relating to the Bid shall be in the language specified in the BDS.
11. Documents comprising the Bid
- 11.1. The original and copy(ies) of Bid submitted by the Bidder shall comprise the following:
- (a) The Bid form (in the format indicated in Section 4);
 - (b) License and certificate
 - (c) Bid Securing Declaration in accordance with Clause 19;
 - (d) Priced Bill of Quantities;
 - (e) **Qualifications:** documentary evidence in accordance with ITB 17 establishing the Bidder's qualifications to perform the Contract;
 - (f) written confirmation authorizing the signatory of the Bid to commit the Bidder, in accordance with ITB sub-clause 20.2;
 - (g) Alternative offers where invited;

(h) and any other materials required to be completed and submitted by Bidders, as specified in the BDS.

11.2. The Instruction to Bidders, Bidding Data Sheet, General Conditions of Contract, Special Conditions of Contract, Specifications and drawings are for the information of the bidders and is not required to be submitted by the bidder.

12. Form of Bid 12.1. The form of Bid, Schedules, and all documents listed under Clause 11, shall be prepared using the relevant forms in Section 4 (Bidding Forms). The forms must be completed without any alterations to the text, and no substitutes shall be accepted. All blank spaces shall be filled in with the information requested.

13. Alternative Bid 13.1. Alternative Bid shall not be considered in small works.

14. Bid Price and Discount 14.1. The prices and discounts quoted by the Bidder in the form of Bid and in the Schedules shall confirm to the requirements specified below;

14.2. The bidder shall submit a bid for the whole of the works described in ITB 1.1 by filling in prices for all items of the Works, as identified in Section 4, Bidding Forms. In case of admeasurement contracts, the Bidder shall fill in rates and prices for all items of the Works described in the Bill of Quantities. Items against which no rate or price is entered by the Bidder will not be paid for by the Employer when executed and shall be deemed covered by the rates for other items and prices in the Bill of Quantities.

14.3. The Bid price shall take into account the cost of materials, transportation, labour, taxes, levies, overheads and profit and any other cost. The Bid price shall be applicable for the whole works described in the Drawings, Specifications and Schedule of Works.

15. Currencies of Bid and Payment 15.1. All prices shall be quoted in Bhutanese Ngultrum (BTN) and shall be paid in BTN.

16. Documents comprising the Technical Proposal 16.1. The bidder shall furnish a work plan in simple bar chart and other information if provided in BDS, to demonstrate the adequacy of the Bidders' proposal to meet the work requirements and the completion time.

17. Documents establishing the Qualification of the Bidder 17.1. To establish its qualification to perform the Contract in accordance with Section 3 (Evaluation and Qualification Criteria) the Bidder shall provide the information requested in the corresponding information sheets included in Section 4 (Bidding Forms)

18. Bid Validity
- 18.1. Bids shall remain valid up to the date **specified in the BDS**. Any Bids which does not meet the validity requirement shall be rejected by the Employer as non-responsive.
19. Bid Securing Declaration
- 19.1. The Bidder shall furnish as a part of its Bid, a Bid-Securing Declaration using the form included in Section 4, Bidding Forms.
- 19.2. The Bid Securing Declaration shall be valid for thirty (30) days beyond the bid validity period. In exceptional circumstances, prior to the expiration of the Bid validity period, the Employer may solicit the Bidder's consent to an extension of the Bid validity period. The request and responses shall be made in writing. The validity of Bid Securing Declaration shall be suitably extended.
- 19.3. Any bid not accompanied by a Bid-Securing Declaration in the prescribed format shall be rejected by the Employer as non-responsive.
- 19.4. The Bid-Securing Declaration shall be executed:
- (a) If the Bidder withdraws the Bid after Bid opening during the period of Bid validity.
 - (b) If the Bidder does not accept the correction of the Bid price, pursuant to ITB clause 30; or
 - (c) In the case of a successful bidder, if the bidder fails within the specified time limit to sign the Agreement; or furnish the required Performance Security.
- 19.5. In case Bid Securing Declaration is executed in pursuant to ITB sub-clause 19.4 the bidder shall deposit the bid security amount specified in the BDS within 14 days from date of notification by Employer.
- 19.6. In case the bidder fails to comply with ITB sub-clause 19.5, bidder shall be excluded from being eligible for Bidding or submitting Bid in any tender with the Employer for a period of two years.
20. Format and Signing of Bid
- 20.1. The Bidder shall prepare one (1) original of the documents comprising the Bid as described in ITB Clause 11 and clearly mark it "ORIGINAL." In addition, the Bidder shall prepare the number of copies of the Bid, as specified in the BDS and clearly mark each of them "COPY." In the event of any discrepancy between the original and the copies, the original shall prevail.
- 20.2. The original and each copy of the Bid shall be typed or written in indelible ink and shall be signed by the person duly authorized to sign on behalf of the Bidder.
- 20.3. Any interlineations, erasures, or overwriting shall be valid only if they are signed or initialled by the person(s) signing the Bid.

D. Submission and Opening of Bids

21. Sealing and Marking of Bids
- 21.1. The Bidder shall enclose the original in one (1) envelope and all the copies of the bid in another envelope, duly marking the envelopes as "ORIGINAL" and "COPY." These two (2) envelopes shall then be enclosed in one (1) single outer envelope.
- 21.2. The inner envelopes shall:
- (a) Be signed across the seals by the person authorised to sign the Bid on behalf of the Bidder;
 - (b) Be marked "ORIGINAL" and "COPY" and
 - (c) Bear the name and address of the Bidder.
- 21.3. The outer envelope shall;
- (a) Be sealed with adhesive or other sealant to prevent reopening;
 - (b) be addressed to the Employer at the address specified in the BDS; bear a statement "DO NOT OPEN BEFORE....." the time and date for Bid opening as specified in the BDS.
- 21.4. If all or any envelopes are not sealed and marked as required by ITB Sub-Clause 21, the Employer shall not reject the bids but assume no responsibility for the misplacement or premature opening of the Bid
22. Bid Submission Deadline
- 22.1. Bids must be received by the Employer at the address and no later than the date and time **specified in the BDS**.
- 22.2. Bids may be hand delivered, posted by registered mail or sent by courier.
- 22.3. The Employer may, at its discretion, extend the deadline for the submission of Bids by amending the Bidding Document in accordance with ITB Clause 7, in which case all rights and obligations of the Employer and Bidders previously subject to the deadline shall thereafter be subject to the new deadline as extended.
23. Late Bids
- 23.1. Late bids shall not be considered and shall be returned unopened.
24. Modification, Substitution or Withdrawal of Bids
- 24.1. A Bidder may modify, substitute or withdraw their Bids after it has been submitted by sending a written notice before the deadline for submission of Bids.
25. Bid Opening
- 25.1. The Employer shall open the Bids in the presence of the bidders attending the bid opening, including modifications or substitutions made pursuant to ITB Clause 24. Bidders or their representatives shall be allowed to attend and witness the bid opening and shall sign a register evidencing their attendance.

- 25.2. The name of the Bidder, Bid modifications, substitutions or withdrawals, total amount of each Bid, number of corrections, discounts, and the presence or absence of Bid Securing Declaration, and such other details as the Employer, at its discretion, may consider appropriate, shall be read out aloud and recorded.
- 25.3. The Employer shall prepare minutes of the Bid opening. The minutes shall include, as a minimum, the name of the Bidders and whether there has been a withdrawal, substitution or modification; the Bid Price including any discounts and the presence or absence of a Bid Securing Declaration, if required.

E. Tender Opening and Evaluation

26. Confidentiality 26.1. After the opening of Bids, information relating to the examination, clarification, and evaluation of Bids and recommendations for award shall not be disclosed to Bidders or other persons not officially concerned with the evaluation process until after the issuance of Letter of Intent to award the Contract.
27. Clarification 27.1. The Employer may ask Bidders for clarification of their Bids in order to facilitate the examination and evaluation of Bids. The request for clarification and the response shall be in writing, and any changes in the prices or substance of the Bid shall not be sought, offered or permitted, except to confirm the correction of arithmetical errors discovered by the Employer in the evaluation of the Bids, in accordance with ITB Clause 30.
28. Bidder
Contacting the
Employer 28.1. Following the opening of Bids and until the letter of Intent to award the Contract is issued no Bidder shall make any unsolicited communication to the Employer or try in any way to influence the Employer's examination and evaluation of Bids which may result in the rejection of bids. If any Bidder wishes to contact the Employer on any matter related to the Bidding process, it should do so in writing.
29. Determination
of Responsive-
ness 29.1. Prior to detailed evaluation of bids, the employer shall determine whether each bid (a) meets the eligibility criteria defined in ITB clause 3; (b) has been properly signed; (c) is accompanied by the bid securing declaration; and (d) is substantially responsive to the requirements of the bidding documents.
- 29.2. A substantially responsive Bid is one that conforms in all respects to the requirements of the Bidding Document without material deviation, reservation or omission. A material deviation, reservation or omission is one that:
- (a) affects in any substantial way the scope, quality, or performance of the Works specified in the Contract; or

- (b) limits in any substantial way, or is inconsistent with the Bid Document, the Employer's rights or the Bidder's obligations under the Contract; or
- (c) if rectified would unfairly affect the competitive position of other Bidders presenting substantially responsive Bids.

29.3. If a Bid is not substantially responsive to the Bidding Document it shall be rejected by the Employer and shall not subsequently be made responsive by the Bidder by correction of the material deviation, reservation or omission.

30. Non
Conformities,
Errors and
Omissions

30.1. The Employer may regard a Bid as responsive even if it contains minor deviations that do not materially alter or depart from the characteristics, terms, conditions and other requirement set forth in the Bidding Document or if it contains errors or oversights that are capable of being corrected without affecting the substance of the Bid.

30.2. Where there is a discrepancy between the amounts in figures and words, the amount in words will govern. If a Bidder refuses to accept the correction, its Bids shall be rejected. The Employer shall correct arithmetical errors on the following basis:

- i. if there is a discrepancy between the unit price and the line item total, the unit price shall prevail and the total price shall be corrected, unless in the opinion of the Employer there is an obvious misplacement of the decimal point in the unit price, in which case the total price, as quoted, shall govern and the unit price shall be corrected; and

31. Evaluation of
Bids

31.1. The Employer shall evaluate and compare only those Bids determined to be substantially responsive to the requirements of the Bidding Document.

31.2. To evaluate a bid, the employer shall consider the following:

- (a) making appropriate adjustments to reflect discounts if any;
- (b) Correction of arithmetic errors, and
- (c) Where applicable, using the evaluation factors specified in Section 3, Evaluation and Qualification Criteria.

31.3. An affirmative determination of qualification shall be a prerequisite for award of the Contract to the Bidder. A negative determination shall result in disqualification of the Bid, in which event the *Employer* may proceed to the next substantially responsive Bid which offers the lowest evaluated bid to make a similar determination of that Bidder's qualifications to perform satisfactorily.

32. Abnormally Low
Bids

32.1. An Abnormally Low Bid is one where the Bid price, in combination with other constituent elements of the Bid, appears unreasonably low to the extent that the Bid price raises material concerns as to the capability of the Bidder to perform the Contract for the offered Bid price. Before proceeding to further analysis, the Employer shall revisit their departmental estimate to ensure its realistic compared to the prevailing market rates.

32.2. Any bid price less than twenty percent (20%) from the employer's departmental estimate shall be scrutinized by seeking written clarifications from the Bidder, including detailed price analyses of its Bid price in relation to the subject matter of the contract, scope, proposed methodology, schedule, allocation of risks and responsibilities, and any other requirements of the request for bidding document.

32.3. After evaluation of the price analyses, in the event that the Employer determines that the Bidder has failed to demonstrate its capability to perform the Contract for the offered Bid Price, the Employer shall reject the Bid.

32.4. If the Procuring Agency decides to accept the abnormally low bid after considering the detailed price analysis, the Procuring Agency shall increase the performance security from ten percent (10%) up to maximum of 30% of the initial contract price; or

Alternatively, the procuring agency may ask the successful bidder to deposit the difference between departmental estimate and contract amount in the form of cash warrant in addition to 10% performance security. However, the total performance security amount shall be limited to maximum of 30% of initial contract price.

33. Seriously
unbalanced
Bids or Front
Loaded

33.1. If the Bid that is evaluated as the lowest evaluated cost is, in the Employer's opinion, seriously unbalanced or front loaded the Employer may require the Bidder to provide written clarifications. Clarifications may include detailed price analyses to demonstrate the consistency of the Bid prices with the scope of works, proposed methodology, schedule and any other requirements of the bidding document.

33.2. After the evaluation of the information and detailed price analyses presented by the Bidder, the Employer may as appropriate:

- (a) accept the Bid and increase the performance security from ten percent (10%) up to maximum of 30% of the initial contract price; or

Alternatively, the procuring agency may ask the successful bidder to deposit the difference between departmental estimate and contract amount in the form of cash warrant in addition to 10% performance security. However, the total performance security amount shall be limited to maximum of 30% of initial contract price ; or

(b) reject the Bid.

34. Employer's
Right to Accept
or Reject any
or all

34.1. The Employer reserves the right to accept any Bid, to annul the Bid proceedings, or to reject any or all Bids, at any time prior to Contract award, without thereby incurring any liability to Bidders.

F. Contract Award

35. Award Criteria

35.1. The Employer shall award the Contract to the Bidders whose offer is substantially responsive to the Bidding Document and that has been determined to be the lowest evaluated Bid, provided that the Bidder is determined to be qualified to perform the Contract and upon fulfillment of works in hand ceiling prescribed by CDB.

36. Letter of Intent
to Award the
Contract/ Letter
of Acceptance

36.1. The Employer shall notify the concerned Bidder whose bid has been selected in accordance with ITB 35.1 in writing (in the format in Section 4-hereafter called the "Letter of Intent to Award") that the Employer has intention to accept its bid and the copy of the letter of intent shall be given to all other bidders who submitted the bid. Such notification should be communicated in writing, including by cable, facsimile, telex or electronic mail to all the bidders on the same day of dispatch. The Employer shall ensure that the same information is uploaded on their website on the same day of dispatch.

36.2. If no bidder submits an application pursuant to ITB 38 within a period of ten (10) days of the notice provided under ITB 36.1, prior to the expiration of Bid validity, the Employer shall notify the successful Bidder, in writing that its Bid has been accepted. Until a formal contract is prepared and executed, the letter of acceptance shall constitute a binding Contract.

36.3. Within fifteen (15) working days of the receipt of the letter of acceptance from the Employer, the successful Bidder shall furnish the Performance Security, in the amount specified in the BDS.

36.4. Within fifteen (15) working days of receipt of the letter of acceptance, the successful Bidder shall sign the contract, date and return it to the Employer.

37. Debriefing by Employer

37.1. On receipt of the Employer's Notification of Intention to Award referred to in ITB 36.1, an unsuccessful Bidder has three (3) working Days to make a written request to the Employer for a debriefing. The Employer shall provide a debriefing to all unsuccessful Bidders whose request is received within this deadline.

37.2. Where a request for debriefing is received within the deadline, the Employer shall provide a debriefing within five (5) working days.

37.3. The Employer shall discuss only such Bid and not the bids of other competitors. The debriefing shall not include:

- (a) point-by-point comparisons with another Bid; and
- (b) information that is confidential or commercially sensitive to other Bidders.

37.4. The Purpose of debriefing is to inform the aggrieved bidder of the reasons for lack of success, pointing out the specific shortcomings in its bid without disclosing contents of other bids.

38. Complaints

38.1. The Bidder shall submit the complaint in writing within ten (10) days from the date of letter of intent to award the contract pursuant to ITB 36.1 to the Employer.

38.2. The head of agency shall, within 7 days after the submission of the complaint, issue a written decision.

38.3. The Bidder may appeal to the Independent Review Body within 5 days of the decision of the Head of the Procuring Agency or, where no such decision has been taken, within 15 days of the original complaint and the copy of the appeal shall be given to procuring agency on the same day.

38.4. Once the appeal copy is received by the procuring agency, it shall not proceed further with the procurement process until receipt of notification from the Independent Review Body Secretariat.

SECTION 2 - BIDDING DATA SHEET

Instructions for completing the Bidding Data Sheet are provided, as needed, in the notes in italics mentioned for the relevant ITB Clauses

| | |
|--|---|
| ITB Clause | Amendment of, and Supplements to, Clauses in the Instructions to Bidders |
| A. General | |
| ITB 1.1 | The Employer is [Gup, Gewog Administration, Shompangkha] |
| | The Name and Identification of the Contract is/are [Maintenance of Geog Office] |
| | The Works are [Earth work in excavation, Block brick wall, Roofing, flooring, indoor & outdoor plumbing etc.] |
| ITB 3.1 | The category of contractor is: [small category of the contractors are eligible to bid for this tender] |
| B. Bidding Documents | |
| ITB 6.1 | For <u>clarification of Tenders purposes</u> only, the Employer's address is: Attention: [Gup,] Address: [Gewog Administration, Chuzargang] Telephone: [17756483] Facsimile number: [nil] Electronic mail address: [not applicable] |
| C. Preparation of Bids | |
| ITB 14.3 | The bid price shall not be adjustable: |
| ITB 16.1 | A simple bar chart is <i>not required</i> |
| ITB 18.1 | The Bid shall be valid up to: [60 days] |
| ITB 20.1 | In addition to the original, [1] copies shall be submitted. |
| ITB 19.5 | The Bid Security Amount is Nu. [60856.40] |
| D. Submission and Opening of Bids | |
| ITB 21.3 | The outer envelopes shall be addressed to: [Gup, Gewog Administration, Shompangkha] |
| ITB 21.3(b) | The Bid opening shall take place on the same day as the closing day of the bid submission at: [12/11/2019 11.00AM] |

| | |
|-----------------------------|--|
| ITB 22.1 | <p>For <u>Bid submission purposes</u> only, the Employer's address is:</p> <p>Attention: Gup</p> <p>Address: Gewog Administration, Shompangkha</p> <p>The deadline for the submission of Tenders is: <i>12/11/2019 on or before 11.00AM</i></p> |
| E. Award of Contract | |
| ITB 36.3 | <p>The amount of Performance Security shall be [10%] of the Contract Price.</p> |

GEWOG ADMINISTRATION
SHOMPANGKHA
SARPANG

SECTION 3 – EVALUATION AND QUALIFICATION CRITERIA

This section contains all the criteria that the Employer shall use to evaluate bids and qualify bidders. The Procuring Agency may apply basic minimum technical qualification requirement (key personnel and equipments) if there is a project specific need.

1. Evaluation

- 1.1. Evaluation shall be done to determine if the bidders meet the required qualifications to be considered for award of work.

2. Qualification Criteria

[Where applicable the following qualification criteria may be specified and delete if not required]

2.1. Key Personnel

[Procuring agency may specify requirements for each position as applicable]

| No. | Position | Qualification | Number of years of relevant experience |
|-----|----------|---------------|--|
| 1 | | | |
| 2 | | | |
| 3 | | | |
| 4 | | | |
| 5 | | | |
| | | | |

The Bidder shall provide details of the proposed key personnel and their relevant experience records in the relevant Forms included in Section 4, forms of Bid & Qualification information to fulfill the above requirements.

2.2. Equipment

[Procuring agency may specify requirements for each equipment as applicable]

| No. | Equipment Type | Number required |
|-----|----------------|-----------------|
| 1 | | |
| 2 | | |
| 3 | | |
| 4 | | |
| 5 | | |
| | | |
| | | |

The Bidder shall provide further details of proposed items of equipment using the relevant Form in Section 4, forms of Bid & Qualification information to fulfill the above requirements.

2.3. Add any other criteria

SECTION 4: BIDDING FORMS

Table of Standard Forms

| |
|--|
| Standard Form: Form of Bid |
| Standard Form: Bid Securing Declaration |
| Standard Form: Qualification Information |
| Standard Form: Letter of Intent |

GEWOG ADMINISTRATION
SHOMPANGKHA
SARPANG

Standard Form: Form of bid

Notes on Form of Bid:

The Bidder shall fill in and submit this bid form with the Bid. If Bidders do not fill in the Contract Price and does not sign this Bid form, the bids will be rejected.

_____ [date]

To _____

Address _____

We offer to execute the contract for construction of “_____” in accordance with the Conditions of Contract accompanying this Bid for the Contract Price of _____
_____ [amount in figures] (_____
_____) [amount in words] _____
_____ [name of currency].

The contract shall be paid in Ngultrums (Nu.)

This Bid and your written acceptance of it shall constitute a binding Contract between us. We understand that you are not bound to accept the lowest or any Bid you receive.

We hereby confirm that this Bid complies with the Bid validity and Bid Securing Declaration required by the bidding documents and specified in the Bidding Data Sheet.

Authorized Signature: _____

(Affix Legal Stamp)

Name and Title of Signatory: _____

Name of Bidder: _____

Address: _____

Form of Bid-Securing Declaration

Date: _____

IFB No.: _____

To: _____

We, the undersigned, declare that:

We understand that, according to your conditions, Bids must be supported by a Bid-Securing Declaration.

We accept that we are required to pay the bid security amount specified in the Bidding Data Sheet within 14 days of your instruction and failure to do so will automatically exclude us from being eligible for Bidding or submitting Bid in any contract with the Employer for the period of two years if we are in breach of our obligation(s) under the Bid conditions, because we:

- (a) have withdrawn our Bid during the period of Bid validity specified by the Bidder in the Form of Bid; or
- (b) having not accepted the correction of errors in accordance with the Instructions to Bidders ITB 30.2; or
- (c) Having been notified of the acceptance of our Bid by the Employer during the period of Bid validity, (i) fail or refuse to furnish the performance security in accordance with the ITT, or (ii) fail or refuse to execute the Contract in accordance with the ITB 36.

We understand this Bid-Securing Declaration shall expire if we are not the successful Bidder, upon the earlier of (i) our receipt of your notification to us of the name of the successful Bidder; or (ii) thirty(30) days after the expiration of our Bid.

Signed: _____

In the capacity of _____

Name: _____

Duly authorized to sign the Bid for and on behalf of: _____

Dated on _____ day of _____, _____

Corporate Seal (where appropriate)

Affix Legal Stamp

Standard Form: Qualification Information

Notes on Form of Qualification Information: The following information is to be filled in by bidders which will be used for purposes of evaluation

1. Individual bidders

1.1. Constitution of legal status of Bidder

[attach copy]

Place of registration:

Principal place of business:

Power of attorney of signatory of Bid

[attach]

1.2. Forms for Key Personnel

Form – 1A: Proposed Key Personnel

Bidders should provide the names of suitably qualified key personnel to meet the specified requirements for each of the positions listed in Section 3(Evaluation and Qualification Criteria). The data on their experience should be supplied using the Form below for each candidate.

| | |
|----|-------------------|
| 1. | Title of position |
| | Name |
| 2. | Title of position |
| | Name |
| 3. | Title of position |
| | Name |

Form -1B: CV of Proposed Manpower

The Bidder shall provide all the information requested below. Fields with asterisk (*) shall be used for evaluation.

| | | |
|-----------------------|----------------------|---------------|
| Position* | | |
| Personnel information | Name * | Date of birth |
| | Qualifications: | |
| Present employment | Name of Employer: | |
| | Address of Employer: | |

| Experience | | |
|------------|----|---|
| From | To | Company, Project , Position, and Relevant Technical and Management Experience |
| | | |
| | | |
| | | |
| | | |
| | | |
| | | |
| | | |
| | | |

Summarize experience in reverse chronological order. Indicate particular technical and managerial experience relevant to the project.

Documents Required:

The Bidder shall provide following supporting documents for the above the proposed manpower:

1. Original signed CVs of technical manpower committed.
2. Copies of Citizenship ID Cards or work permit/ Passport/ Election/Voter ID cards (for foreign Workers) of all manpower committed.
3. Copies of contract agreements with all personnel if they have been hired on contract by the contractor.

1.3. Forms for Equipment

The Bidder shall provide adequate information to demonstrate clearly that it has the capability to meet the requirements for the key equipment listed in Section 3 (Evaluation and Qualification Criteria).

| Sl.No | Equipment Name & Type | Owned | Hired | Total No. |
|-------|-----------------------|-------|-------|-----------|
| 1. | | | | |
| 2. | | | | |
| 3. | | | | |
| 4. | | | | |

Documents Required:

The Bidder shall provide following supporting documents for the above proposed equipments:

1. Copy of the registration certificate of each equipment committed
2. Copy of Insurance policy for each equipment where applicable
3. In case of hiring, copy of the lease agreement in addition to 1 & 2 above
4. In case of equipment that do not require registration with RSTA copy of cash memos stamped by RRCO if newly imported or copy of sale deeds or verification letter issued by a Government Engineer.

GEWOG ADMINISTRATION
SHOMPANGKHA
SARPANG

Standard Form: Letter of Intent

(Letterhead paper of the Employer)

Notes on standard form of letter of Intent

This issuance of Letter of Intent (always before letter of acceptance) is the information of the selection of the bid of the successful bidder by the Employer and for providing information to other unsuccessful bidders who participated in the bid as regards the outcome of the procurement process

The Employer shall allow 10 days as described in ITB 36 between this letter of intent and letter of acceptance to allow aggrieved bidders to challenge your decision if they feel they have treated unfairly.

(Insert date)

To:----- [Name and address of the Contractor]

This is to notify you that, it is our intention to award the contract for your Bid dated-----

[Insert date] for execution of the-----

-----[Insert name of the contract and identification number, as given in the BDS/SCC] for the Contract Price of-----

-----[Insert amount in figure and words and name of currency] as corrected and modified[if any corrections] in accordance with the Instructions to Bidders.

Authorized Signature: -----

Name and Title of Signatory:-----

Name of Agency:-----

CC:

[Insert name and address of all other bidders who submitted the bid]

SECTION 5. GENERAL CONDITIONS OF CONTRACT

1. Definitions

1.1. The following words and expressions shall have the meaning hereby assigned to them. Boldface type is used to identify the defined terms:

- (a) **Completion Certificate** means the Certificate issued by the Employer as evidence that the Contractor has executed the Works in all respects as per drawing, specifications, and Conditions of Contract.
- (b) The **Completion Date** is the date of completion of the Works as certified by the Engineer, in accordance with GCC Clause 18.
- (c) **Contract** means the Agreement entered into between the Employer and the Contractor to execute, complete and maintain the Works.
- (d) **Contractor** means the person or corporate body whose Tender to carry out the Works has been accepted by the Employer and is named as such in the SCC.
- (e) **Contract Price** is the price stated in the Letter of Acceptance and thereafter as adjusted in accordance with the provisions of the Contract.
- (f) The **Contractor's Bid** is the completed Bid Document including the priced offer submitted by the Contractor to the Employer.
- (g) **Days** mean calendar days.
- (h) A **Defect** is any part of the Works not completed in accordance with the Contract.
- (i) The **Employer** is the party named in the SCC who employs the Contractor to carry out the Works.
- (j) The **Engineer** is the person named in the SCC, who is responsible for supervising the execution of the works and administering the Contract.
- (k) The **Intended Completion Date** is the date specified in the SCC on which the Contractor shall complete the Works and may be revised if extension of time or an acceleration order is issued by the Engineer.
- (l) The **Site** is the area defined as such in the SCC.
- (m) A **Variation** is an instruction given by the Project Manager which varies the Works.
- (n) The **Works** are what the Contract requires the Contractor to construct, install, and hand over to the Employer, as defined in the SCC.

2. Interpretation
& Documents
forming the
Contract

2.1. In interpreting the GCC, singular also means plural, male also means female or neuter, and the other way around. Headings in the GCC shall not be deemed part thereof or be taken into consideration in the interpretation or construance of the Contract. Words have their normal meaning under the language of the Contract unless specifically defined.

2.2. The following documents forming the Contract shall be interpreted in the following order of priority:

- (a) the signed Contract Agreement.
- (b) the Letter of Acceptance .
- (c) the completed Bid form as submitted by the Bidder.
- (d) the Special Conditions of Contract.
- (e) the General Conditions of Contract.
- (f) Specifications
- (g) the Drawings.
- (h) any other document listed in the SCC as forming part of the Contract.

3. Corrupt,
Fraudulent,
Collusive or
Coercive Practices

3.1. The Government requires that Employers, as well as Contractors shall observe the highest standard of ethics during the implementation of procurement proceedings and the execution of Contracts under public money.

3.2. In pursuance of this requirement, the Employer shall

- (a) exclude the Contractor from participation in the procurement proceedings concerned or reject a proposal for award; and
- (b) declare a Contractor ineligible, either indefinitely or for a stated period of time, from participation in procurement proceedings under public money;

If at any time, determines that the bidder has engaged in corrupt, fraudulent, collusive or coercive practices in competing for, or in executing, a Contract under the public money.

3.3. The Government defines, for the purposes of this provision, the terms set forth below as follows:

- (a) corrupt practice⁵ is the offering, giving, receiving or soliciting, directly or indirectly, of anything of value⁶ to influence improperly the actions of another party;

- (b) “fraudulent practice”⁷ is any intentional act or omission, including a misrepresentation, that knowingly or recklessly misleads, or attempts to mislead, a party to obtain a financial or other benefit or to avoid an obligation;
- (c) “collusive practice”⁸ is an arrangement between two or more parties designed to achieve an improper purpose, including to influence improperly the actions of another party; and
- (d) “coercive practice”⁹ is impairing or harming, or threatening to impair or harm, directly or indirectly, any party or the property of the party to influence improperly the actions of a party.

3.4. The Government requires that the Client’s personnel have an equal obligation not to solicit, ask for and/or use coercive methods to obtain personal benefits in connection with the said proceedings.

- | | |
|---------------------------------------|---|
| 4. Governing Language and Law | 4.1. The Contract as well as all correspondence and documents relating to the Contract exchanged by the Contractor and the Employer, shall be written in English unless otherwise stated in the SCC. The Contract shall be governed by and interpreted in accordance with the laws of the Kingdom of Bhutan. |
| 5. Engineer’s Decision | 5.1. Except where otherwise specifically stated in the SCC, the Engineer will decide Contractual matters between the Employer and the Contractor in the role as representative of the Employer. |
| 6. Delegation | 6.1. The Engineer may delegate any of his duties and responsibilities to his representative, after notifying the Contractor, and may cancel any delegation, without retroactivity, after notifying the Contractor. |
| 7. Communications and Notices | 7.1. Communications between Parties pursuant to the Contract shall be in writing to the address specified in the SCC. A notice shall be effective when delivered or on the notice’s effective date, whichever is later. |
| 8. Sub- Contracting | 8.1. The Contractor shall not be permitted to subcontract any part of the Works in whole or in part. |
| 9. Contractor’s Personnel & Equipment | 9.1. The Contractor shall employ the key personnel named in the Schedule of Key Personnel, as referred to in the SCC, to carry out the functions stated in the Schedule, or other personnel approved by the Engineer. Similarly, the contractor shall deploy all committed equipments at site as and when required by the employer. |

10. Welfare of Labourers & Child Labour
- 10.1. The Contractor shall provide proper accommodation to his labourers and arrange proper water supply, conservancy and sanitation arrangements at the site in accordance with relevant regulations, rules and orders of the government.
- 10.2. The Contractor shall comply with the applicable minimum age, labour laws and requirements of (including applicable treaties which have been ratified by) the Government of Bhutan regarding hazardous forms of child labour.
11. Safety, Security and Protection of the Environment
- 11.1. The Contractor shall throughout the execution and completion of the Works and the remedying of any defects therein :
- (a) have full regard for the safety of all persons entitled to be upon the Site and keep the Site and the Works in an orderly state;
 - (b) provide and maintain at the Contractors own cost all lights, guards, fencing, warning signs and watching for the protection of the Works or for the safety on-site; and
 - (c) take all reasonable steps to protect the environment on and off the Site and to avoid damage or nuisance to persons or to property of the public or others resulting from pollution, noise or other causes arising as a consequence of the Contractors methods of operation.
12. Access to the Site
- 12.1. The Contractor shall allow the Engineer and any person authorised by the Engineer access to the Site and to any place where work in connection with the Contract is being carried out or is intended to be carried out.
13. Documents & Information.
- 13.1. The Contractor shall furnish to the Engineer all information, schedules, calculations and supporting documents that may be requested.
14. Property
- 14.1. If the contract is terminated by the Employer because of the contractors default, then, the contractor shall not be allowed to remove any materials on the Site, Plant, and Temporary Works until the matter is amicably resolved.
15. Insurance
- 15.1. The Contractor shall provide, in the joint names of the Employer and the Contractor, insurance cover from the Start Date to the end of the Defects Liability Period, in the amounts and deductibles stated in the SCC for the following events which are due to the Contractor's risks:
- (a) loss of or damage to the Works, Plant and Materials to be built into the works.

15.2. The Contractor shall deliver policies and certificates of insurance to the Engineer, for the Engineer's approval, before the Start Date. All such insurance shall provide for compensation to be payable in the types and proportions of currencies required to rectify the loss or damage incurred. Payments received from insurers shall be used for the rectification of loss or damage.

15.3. If the Contractor does not provide any of the policies and certificates required, the Employer may effect the insurance which the Contractor should have provided and recover the premiums the Employer has paid from payments otherwise due to the Contractor or, if no payment is due, the payment of the premiums shall be a debt due.

16. Possession of the Site 16.1. The Employer shall give possession of the Site, or parts of the Site, to the Contractor on the date(s) specified in the SCC.

17. Commencement of Works 17.1. The Contractor may commence execution of the Works on the Start Date, or other such date as specified in the SCC, and shall carry out the Works in an expeditious manner.

17.2. If the Contractor fails to commence the works within the above stated period, the Employer may, at his sole discretion, terminate the Contract and may use the proceeds of the Performance Security to compensate for any losses thereof, if any.

18. Completion of Works 18.1. The Contractor shall complete the Works within the number of days stated in the SCC from the date of commencing the Works on the Site.

19. Programme of Works 19.1. Within the time stated in the SCC, the Contractor shall submit to the Engineer for approval a work program. The Contractor shall submit to the Engineer for approval an updated Programme at intervals no longer than the period stated in the SCC.

20. Early Warning 20.1. The Contractor shall warn the Engineer at the earliest opportunity of specific likely future events or circumstances that may adversely affect the quality of the work result in increase to the Contract Price or delay in the execution of the Works.

21. Compensation Events 21.1. The following shall be Compensation Events:
(a) the Employer does not give access to the Site or part of the Site by the Site Possession Date stated in the SCC clause 16; and
(b) if the payment is delayed pursuant to Clause 25.1.

21.2. If a Compensation Event would prevent the work being completed before the Intended Completion Date, the Intended Completion Date shall be extended, as appropriate, by the Engineer.

22. Non-Scheduled Items of Works
- 22.1. The Contractor shall be paid for non-scheduled items of works only when the Engineer approves such works and at the rates and in the manner stated in the SCC.
23. Schedule of Works
- 23.1. The Schedule of Works will contain rates for all items for the construction including temporary works, installation, testing, and commissioning work to be done by the Contractor.
- 23.2. The Contractor shall be paid for the quantity of the work done at the rate in the Contract Agreement for each item.
- 23.3. The Contractor shall be entirely responsible for all taxes, duties, license fees, and other such levies imposed outside and inside Bhutan.
24. Payment Certificates
- 24.1. The Contractor shall submit to the Engineer monthly statements of the estimated value of the work executed less the cumulative amount certified previously. The Engineer shall check the Contractor's monthly statement and certify the amount to be paid to the Contractor latest by 30 working days from the date of receipt of contractor's monthly statement in correct and complete form.
- 24.2. The value of work executed shall be determined by the Engineer.
- 24.3. The value of work executed shall comprise the value of the quantities of the items in the Schedule of Works completed.
- 24.4. The value of work executed shall include the valuation of Variations, Certified Dayworks and Compensation Events.
- 24.5. The Engineer may exclude any item certified in previous certificates or reduce the proportion of any item previously certified in any certificate in the light of later information.
25. Payments
- 25.1. The Employer shall pay the Contractor the amounts certified by the Engineer within thirty (30) days of the date of each certificate.
- 25.2. The Employer shall make Advance Payment (mobilization and secured advance) to the Contractor of the amounts and by the dates stated in the SCC. The mobilization advance shall be backed up by equivalent amount of unconditional Bank Guarantee (Form 4).
- 25.3. The Contractor is to use the advance payment only to pay for Equipment, Plant, Materials, and mobilisation expenses required specifically for the execution of the Contract. The Contractor shall demonstrate that the advance payment has been used in this way by submitting copies of invoices or other documents to the Employer.

25.4. The advance payment shall be recovered by deducting proportionate amounts from payments due to the Contractor, following the schedule of completed percentages of the Works on a payment basis. No account shall be taken of the advance payment or its repayment in assessing valuations of work done, variations, claims or any amount payable due to failure to complete the works.

26. Changes in
Quantities¹⁰

26.1. If the final quantity of the work done differs from the quantity in the Bill of Quantities for the particular item by more than twenty percent (20%), provided the cost of variation beyond twenty percent (20%) limit exceeds one percent (1%) of the Initial Contract Value the Employer shall adjust the quoted rate up or down to allow for the change. Only when both conditions are met then the quoted rate shall be changed.

(a) If the quantity of work executed exceeds the quantity of the item in BOQ beyond the higher specified limit the Employer shall fix the market rate (which may be lower or higher than the quoted rate) to be applied for the additional quantity of the work executed.

(b) If the quantity of work executed is less than the quantity of the item in BOQ lesser than the lower specified limit, the Employer shall fix the market rate based on the submission of the contractor (which may be lower/higher than the quoted rate) to be applied for whole of the quantity of the work so executed for that particular item.

26.2. The rates shall not be adjusted from changes in quantities if thereby the Initial Contract Price is exceeded by more than five percent (5%), except with the prior approval of the Employer in consultation with the Tender Committee.

26.3. For works up to Nu. 50M, when quantity deviation exceeds twenty percent (20%) from the quantity in BOQ and the total cost of such deviations exceeds twenty percent (20%) of the initial contract price, the procuring agency shall seek prior approval of the Competent Authority (Finance Committee constituted in their respective agency)

26.4. If requested by the Project Manager, the Contractor shall provide the Project Manager with a detailed cost breakdown of any rate in the Bill of Quantities.

27. Variations

27.1. The Project Manager shall order any variation of the form, quality or quantity of the Works or any part thereof that may, in his opinion, be necessary. Each variation may include, but is not limited to, any of the following:

- (a) increase or decrease in the quantity of any work included in the Contract,
- (b) omission of any item of work,
- (c) change in the character or quality or kind of any such work,
- (d) change in the levels, lines, position and dimensions of any part of the works,
- (e) additional work of any kind (not exceeding twenty percent (20%) of the original contract amount, or the maximum threshold value for the use of Limited Tender whichever is lower), or
- (f) change in any specified sequence or timing of construction activities.

27.2. All Variations shall be included in updated Programs produced by the Contractor.

27.3. The Contractor shall provide the Project Manager with a quotation for carrying out the Variation when requested to do so by the Project Manager. The Project Manager shall assess the quotation, which shall be given within seven (7) days of the request or within any longer period stated by the Project Manager and before the Variation is ordered.

27.4. If the Contractor's quotation is unreasonable, the Project Manager may order the Variation and make a change to the Contract Price, which shall be based on the Project Manager's own forecast of the effects of the Variation on the Contractor's costs.

27.5. If the Project Manager decides that the urgency of varying the work would prevent a quotation being given and considered without delaying the work, no quotation shall be given and the Variation shall be treated as a Compensation Event.

27.6. The Contractor shall not be entitled to additional payment for costs that could have been avoided by giving early warning.

27.7. If the work in the Variation corresponds to an item description in the Bill of Quantities and if, in the opinion of the Project Manager, the quantity of work above the limit stated in Sub-Clause 26.1 or the timing of its execution do not cause the cost per unit of quantity to change, the rate in the Bill of Quantities shall be used to calculate the value of the Variation. If the cost per unit of quantity changes, or if the nature or timing of the work in the Variation does not correspond with items in the Bill of Quantities, the quotation by the Contractor shall be in the form of new rates for the relevant items of work.

27.8. For works up to Nu. 50 Million, if the value of additional work exceeds twenty percent (20%) of the initial contract price, the procuring agency shall seek prior approval of the Competent Authority (Finance Committee Constituted in respective agencies).

28. Retention

28.1. The Employer shall retain from each payment due to the Contractor the proportion stated in the SCC until the completion of the whole of the Works.

28.2. On completion of the whole of the Works, half the total amount retained shall be repaid to the Contractor, the remaining half when the Defects Liability Period has passed and the Engineer has certified that all Defects notified by the Engineer to the Contractor before the end of this period have been corrected.

29. Liquidated Damages

29.1. The Contractor shall pay liquidated damages to the Employer at the rate per day stated in the SCC for each day that the Completion Date is later than the Intended Completion date for the works or for any part thereof.

30. Performance Security

30.1. Upon receipt of letter of acceptance, a Performance Security shall be provided to the Employer in the amount and form stated in the Contract Forms (Form 3). The Performance Security shall be valid until a date thirty (30) days from the date of issue of the Certificate of Completion.

30.2. The proceeds of the performance security shall be payable to the Employer unconditionally upon first written demand as compensation for any loss resulting from the Contractor's failure to complete its obligations under the Contract.

31. Price Adjustment

31.1. Prices may be adjusted for fluctuations in the cost of materials only if contract duration exceeds 12 months and if so **provided for in the SCC.**

31.2. The adjustment shall be based on the cost of materials as reflected by the Material Index Numbers published by the National Statistical Bureau¹¹ (NSB), calculated for every successive period of 3 months after the 12th month of the Contract using the following formulae.

$$V = W \times 0.80 \times 0.75 \times (M - M_0) / M_0$$

Where:

V = amount of variation for materials payable to/recoverable from the contractor for the period under review;

W = value of the work done during the period under review minus (amount of secured advance recovered in the same period + value of works executed under variations for which the variations are paid in the new rate);

M₀ = Material Index for the month in which the tender was submitted;

M = the average value of the above Index Number for the 3 months period under review;

31.3. Price Adjustment shall apply only for work carried out within the stipulated time or extensions granted by the Procuring Agency and shall not apply to work carried out beyond the stipulated time for reasons attributable to the Contractor.

32. Completion

32.1. The Contractor shall request the Engineer to issue a Certificate of Completion of the Works, and the Engineer will do so upon deciding that the work is substantially completed.

33. Correction of Defects

33.1. The Engineer shall give notice to the Contractor of any Defects before the end of the Defects Liability Period, which begins at Completion, and is defined in the SCC. The Defects Liability Period shall be extended for as long as the Defects remain to be corrected.

33.2. If the Contractor has not corrected a Defect within the time specified in the Engineer's notice, the Engineer will assess the cost of having the Defect corrected, and the Contractor will pay this amount.

34. Taking Over

34.1. The Employer shall take over the Site and the Works within seven (7) days of the Engineer issuing a Certificate of Completion.

35. Final Account

35.1. The Contractor shall supply the Engineer a detailed account of the total amount that the Contractor considers payable under the Contract. The Engineer shall certify any final payment that is due to the Contractor within twenty-one (21) days of receiving the Contractor's account if it is correct and complete.

35.2. The Employer shall effect payment of the final account within thirty (30) days from the date of certification by the Engineer.

36. Termination

36.1. The Employer or the Contractor by giving thirty (30) days written notice of default to the other party, may terminate the Contract in whole or in part if the other party causes a fundamental breach of Contract.

36.2. Fundamental breaches of the Contract shall include, but shall not be limited to, the following:

- (a) the Contractor stops work for more than thirty (30) days when no stoppage of work is shown on the current Programme and the stoppage has not been authorised by the Engineer;
- (b) the Engineer gives notice that failure to correct a particular defect is a fundamental breach of Contract and the Contractor fails to correct it within a reasonable period of time determined by the Engineer;
- (c) the Contractor has delayed the completion of the Works by the number of days for which the maximum amount of Liquidated Damages can be paid;
- (d) the Contractor, in the judgment of the Employer, has engaged in corrupt or fraudulent practices, as defined in GCC Clause 3, in competing for or in executing the Contract; and
- (e) a payment certified by the Engineer is not paid to the Contractor by the Employer within sixty (60) days of the date of the Engineer's certificate.

36.3. The Employer and the Contractor may at any time terminate the Contract by giving notice to the other party if either of the parties becomes bankrupt or otherwise insolvent. In such event, termination will be without compensation to any party provided that such termination will not prejudice or affect any right of action or remedy that has accrued or will accrue to the other party.

36.4. Notwithstanding the above, the Employer may terminate the Contract for convenience.

36.5. If the Contract is terminated, the Contractor is to stop work immediately, make the Site safe and secure and hand over the Site to the Employer as soon as reasonably possible.

37. Payment upon
Termination

37.1. If the Contract is terminated because of a fundamental breach of Contract by the Contractor, the Engineer shall issue a certificate for the value of the work done and Plant and Materials ordered less advance payments received up to the date of the issue of the certificate and less the percentage to apply to the value of the work not completed, as indicated in the SCC. If the total amount due to the Employer exceeds any payment due to the Contractor, the difference shall be a debt payable to the Employer.

37.2. If the Contract is terminated for the Employer's convenience or because of a fundamental breach of Contract by the Employer, the Contractor shall be entitled to payments for completed works and the materials that have been brought to the site for the purpose of the works, but not used as certified by the Engineer after adjusting any payments received by the Contractor.

38. Release from
Performance

38.1. If the Contract is frustrated by the outbreak of war or by any other event entirely outside the control of either the Employer or the Contractor, the Engineer shall certify that the Contract has been frustrated. The Contractor shall make the Site safe and stop work as quickly as possible, after receiving this certificate. The Contractor shall be paid for all works carried out before stoppage of work and any work carried out afterwards to which a commitment was made.

39. Force Majeure

39.1. For the purposes of this Contract, "Force Majeure" means an exceptional event or circumstance:

- (a) which is beyond a Party's control,
- (b) which such Party could not reasonably have provided against before entering into the Contract,
- (c) which, having arisen, such Party could not reasonably have avoided or overcome, and
- (d) which is not substantially attributable to the other Party.

39.2. Force Majeure may include, but is not limited to, exceptional events or circumstances of the kind listed below, so long as conditions (a) to (d) above are satisfied:

- (a) war, hostilities (whether war be declared or not), invasion, act of foreign enemies,
- (b) rebellion, terrorism, sabotage by persons other than the Contractor's Personnel, revolution, insurrection, military or usurped power, or civil war,
- (c) riot, commotion, disorder, strike or lockout by persons other than the Contractor's Personnel,

- (d) munitions of war, explosive materials, ionizing radiation or contamination by radio-activity, except as may be attributable to the Contractor's use of such munitions, explosives, radiation or radio-activity, and
- (e) natural catastrophes such as earthquake, hurricane, typhoon or volcanic activity.

39.3. However, force majeure shall not include the following;

- (a) rainfall
- (b) snowfall
- (c) strikes in other countries
- (d) non-availability of labourer and materials such as timbers, boulders, sand, and other materials
- (e) difficulty and risky terrain and remoteness of site.

40. Settlement of Disputes

40.1. The Employer and the Contractor shall use their best efforts to settle amicably all disputes arising out of or in connection with this Contract or its interpretation.

40.2. Any dispute between the parties to the Contract that may not be settled amicably will be referred to Arbitration at the initiative of either of the parties.

40.3. The Arbitration shall be conducted in accordance with the Arbitration Rules of the Kingdom of Bhutan in force.

GEWOG ADMINISTRATION
SARPANG
SARPANG

SECTION 6. SPECIAL CONDITIONS OF CONTRACT

Instructions for completing the Special Conditions of Contract are provided, as needed, in the notes in italics mentioned for the relevant GCC Clauses.3

| Clause Ref | Amendments of, and Supplements to, Clauses in the General Conditions of Contract |
|-------------------|---|
| GCC 1.1(d) | The Contractor is <i>[name, address and name of authorised representative]</i> . |
| GCC 1.1(i) | The Employer is <i>[Gup, Gewog Administration, Shompangkha]</i> . |
| GCC 1.1(j) | The Engineer is <i>[Sangay Tempa, AE]</i> . |
| GCC 1.1(k) | The Intended Completion Date for the whole of the Works shall be <i>7 months</i> |
| GCC 1.1(l) | The Site is located at <i>[Dargaythang Chiwg, Shompangkha Gewog]</i> . |
| GCC 1.1(m) | The Works are <i>[Dismantalling works, Flooring, Plinth works, Painting, roofing ect..]</i> |
| GCC 2.2(h) | The additional documents forming part of this Contract are: <i>["No additional documents".]</i> |
| GCC 4.1 | The Language governing the Contract shall be <i>[English]</i> |
| GCC 5.1 | The Engineer shall obtain specific approval of the Employer before taking any of the following actions: |
| GCC 7.1 | The addresses for Communications shall be: For the Employer: <i>[Gup, Gewog Administration, Shompangkha]</i> For the Contractor: <i>[Insert name, address and contact details].</i> |
| GCC 9.1 | The Key Personnel of the Contractor are: as referred to in the SCC, to carry out the functions stated in the Schedule, or other personnel approved by the Engineer. Similarly, the contractor shall deploy all committed equipment's at site as and when required by the employer |
| GCC 15.1 | For insurance purposes the type of cover required shall be: The contractor shall be responsible for the insurance [<i>[As per the Royal Insurance Corporation of Bhutan Limited (RICBL) Norms (CAR)]</i> |
| GCC 16.1 | Possession of the site shall be within <i>[10 days after the issue of work order]</i> |
| GCC 17.1 | Commencement of work shall be within <i>[10]</i> days from the date of handing over Possession of the Site. |
| GCC 18.1 | Completion of works shall be within <i>[7 months]</i> from the date of commencing the works on the site. |
| GCC 19.1 | The Contractor shall submit the first work plan [7] days after signing the Contract, and shall update the work plan every [7] weeks during the period of the Contract. |
| GCC 22.1 | <i>[None]</i> |

| GCC 25.2 | <p>An advance payment of [10] % of the Contract Price will be made to the Contractor within (14) days of Contract signing date.</p> <p>The secured advance of Nu. [75%] of the cost of the materials brought at site shall be paid at [30] days.</p> | | | | | | | | | | | | | | | | | | |
|-----------------|---|---------------------|-----------------|---------------------|---|-------|---------|---|-------|---------|---|-------|---------|---|--------|---------|---|-------|----------|
| GCC 28.1 | <p>The Retention shall be [10] % of the final contract Price.</p> | | | | | | | | | | | | | | | | | | |
| GCC 29.1 | <p>The Contractor shall pay liquidated damages to the Employer at the rate per day stated in the SCC for each day that the Completion Date is later than the Intended Completion date for the works or for any part thereof.</p> <p>The liquidated damages for the whole of the Works are</p> <table><tr><th>Sl. No</th><th>LD Applied in %</th><th>No of days delayed.</th></tr><tr><td>1</td><td>0.06%</td><td>20 days</td></tr><tr><td>2</td><td>0.07%</td><td>40 days</td></tr><tr><td>3</td><td>0.08%</td><td>60 days</td></tr><tr><td>4</td><td>0.09 %</td><td>80 days</td></tr><tr><td>5</td><td>0.1 %</td><td>100 days</td></tr></table> <p>The imposition of LD shall not be segregated, the next higher percentage shall apply i.e, for 21 days 0.07% would apply instead of 0.06% for 20 days and 0.07% for 1 day. However, LD on termination of the works shall be levied on the total quoted amount or the initial contract price.</p> | Sl. No | LD Applied in % | No of days delayed. | 1 | 0.06% | 20 days | 2 | 0.07% | 40 days | 3 | 0.08% | 60 days | 4 | 0.09 % | 80 days | 5 | 0.1 % | 100 days |
| Sl. No | LD Applied in % | No of days delayed. | | | | | | | | | | | | | | | | | |
| 1 | 0.06% | 20 days | | | | | | | | | | | | | | | | | |
| 2 | 0.07% | 40 days | | | | | | | | | | | | | | | | | |
| 3 | 0.08% | 60 days | | | | | | | | | | | | | | | | | |
| 4 | 0.09 % | 80 days | | | | | | | | | | | | | | | | | |
| 5 | 0.1 % | 100 days | | | | | | | | | | | | | | | | | |
| GCC 31.1 | <p>The Contract [<i>"is not"</i>] subject to price adjustment in accordance with GCC Clause 31. [<i>Price Adjustment is applicable only for Contracts of duration more than 12 months</i>]</p> <p>Until NSB comes up with the Material Index for the Royal Government of Bhutan, the Wholesale</p> <p>Price- Index (all commodities) for Materials shall be used for the purpose of this clause. Visit www.eaindustry.nic.in for the Wholesale Price Index</p> | | | | | | | | | | | | | | | | | | |
| GCC 33.1 | <p>The Defects Liability Period shall be [12 months].</p> | | | | | | | | | | | | | | | | | | |
| GCC 37.1 | <p>The percentage to apply to the value of the work not completed, representing the Employer's additional cost for completing the Works, is 20% of the balance work up to a maximum of 10% of the initial contract price]</p> | | | | | | | | | | | | | | | | | | |

SECTION 7 – CONTRACT FORMS

This section contains forms which, once completed, will form part of the Contract. The forms for Performance Security and Advance Payment Security, when required, shall only be completed by the successful Bidder after Contract award.

Contract Forms

| | |
|----------|---|
| Form - 1 | Letter of Acceptance |
| Form - 2 | Contract Agreement |
| Form - 3 | Bank Guarantee for Performance Security |
| Form - 4 | Bank Guarantee for Advance Payment |

GEWOG ADMINISTRATION
SHOMPANGKHA
SARPANG

Letter of Acceptance

Contract No:

Date:

To:

[Name and address of Contractor]

This is to notify you that your Bid dated *[insert date]* for the execution of the Works for *[name of project / Contract]* for the Contract Price of Nu *[amount in figures and in words]*, as corrected and modified in accordance with the Instructions to bidder is hereby accepted by *[name of the Employer]*.

You are requested to proceed with the execution of the Works on the basis that this letter of acceptance shall constitute the formation of a Contract, which shall become binding upon furnishing a Performance Security and signing the Contract Agreement within fifteen (15) working days, in accordance with ITB Clause 36.

We attach the Contract Agreement and Special Conditions of Contract for your perusal and signature.

GEWOG ADMINISTRATION

Signed

SHOMBANGKHA

Duly authorised to sign for and on behalf of

[Name of Procuring Entity]

SARPANG

Date:

Contract Agreement

THIS AGREEMENT, made the [day] of [month] [year] between [name and address of Employer] (hereinafter called "the Employer") of the one part and [name and address of Contractor] (hereinafter called "the Contractor") of the other part.

WHEREAS, the Employer invited Tenders for certain Works, viz, [brief description of the Works] and has accepted a Tender by the Contractor for the execution of those works in the sum of Ngultrum [insert amount in figures and words], hereinafter called "the Contract Price.

NOW THIS AGREEMENT WITNESSETH as follows:

1. In this Agreement, words and expressions shall have the same meanings as are respectively Assigned to them in the General Conditions of Contract hereinafter referred to.
2. The documents forming the Contract shall be interpreted in the following order of priority:
 - (a) The signed Contract Agreement;
 - (b) The letter of Acceptance;
 - (c) The completed Bid form as submitted by the Bidder;
 - (d) The Special Conditions of Contract;
 - (e) The General Conditions of Contract;
 - (f) Specifications
 - (g) The Drawings; and
 - (h) Any other document listed in the SCC as forming part of the Contract..
3. In consideration of the payments to be made by the Employer to the Contractor as hereinafter mentioned, the Contractor hereby covenants with the Employer to execute and complete the Works and to remedy any defects therein in conformity in all respects with the provisions of the Contract.
4. The Employer hereby covenants to pay the Contractor in consideration of the execution and completion of the Works and the remedying of defects therein, the Contract Price or such other sum as may become payable under the provisions of the Contract at the times and in the manner prescribed by the Contract.

IN WITNESS whereof the Parties thereto have caused this Agreement to be executed in accordance with the laws of Bhutan on the day month and year first before written.

For the Employer

for the Contractor

Signature

Print Name

Title

In the presence of (Name)

Address

Bank Guarantee for Performance Security

*[This is the format for the Performance Security to be issued by any financial institution in Bhutan
In accordance with ITB Clause 36]*

Contract No:

Date:

To:

[Name and address of Employer]

PERFORMANCE GUARANTEE No:

We have been informed that *[name of Contractor]* (hereinafter called “the Contractor”) has undertaken, pursuant to Contract No *[reference number of Contract]* dated *[date of Contract]* (hereinafter called “the Contract”), the execution of works *[description of works]* under the Contract.

Furthermore, we understand that, according to your conditions, Contracts must be supported by a performance guarantee.

At the request of the Contractor, we *[name of bank]* hereby irrevocably undertake to pay you, without cavil or argument, any sum or sums not exceeding in total an amount of Nu *[insert amount in figures and in words]* upon receipt by us of your first written demand accompanied by a written statement that the Contractor is in breach of its obligation(s) under the Contract conditions, without you needing to prove or show grounds or reasons for your demand of the sum specified therein.

This guarantee is valid until *[date of validity of guarantee]*, consequently, we must receive at the Above-mentioned office any demand for payment under this guarantee on or before that date.

Signature

Signature

Bank Guarantee for Mobilisation Advance

[this is the format for the Advance Payment Guarantee to be issued by a financial institutions in Bhutan in their letter pad in accordance with SCC Clause 25.2]

Contract No:

Date:

To:

[Name and address of Employer]

ADVANCE PAYMENT GUARANTEE No:

We have been informed that *[name of Contractor]* (hereinafter called "the Contractor") has undertaken, pursuant to Contract No *[reference number of Contract]* dated *[date of Contract]* (hereinafter called "the Contract"), the execution of works *[description of works]* under the Contract.

Furthermore, we understand that, according to your conditions, Advance Payments must be supported by a bank guarantee.

At the request of the Contractor, we *[name of bank]* hereby irrevocably undertake to pay you, without cavil or argument, any sum or sums not exceeding in total an amount of Nu. *[insert amount in figures and in words]* upon receipt by us of your first written demand accompanied by a written statement that the Contractor is in breach of its obligation(s) under the Contract conditions, without you needing to prove or show grounds or reasons for your demand of the sum specified therein.

We further agree that no change, addition or other modification of the terms of the Contract to be performed, or of any of the Contract documents which may be made between the Employer and the Contractor, shall in any way release us from any liability under this guarantee, and we hereby waive notice of any such change, addition or modification.

This guarantee is valid until *[date of validity of guarantee]*, consequently, we must receive at the Above - mentioned office any demand for payment under this guarantee on or before that date.

Signature

Signature

SECTION 8. BILL OF QUANTITIES (BOQ)

GEWOG ADMINISTRATION
SHOMPANGKHA
SARPANG

NAME OF WORK: MAINTENANCE OF GEOG OFFICE.

LOCATION : SHOMPANGKHA GEOG.

DZONGKHAG : SARPANG.

DETAIL : BILLS OF QUANTITIES(BOQ)

| SL. | DETAILS | UNITS | QTY | RATE IN FIGURE | AMOUNTS |
|-----|---|-------------|--------|----------------|---------|
| 1 | Dismantling doors, windows, and clerestory windows <3sq.m (steel, wood) including architrave, hold fasts, stacking within 50m lead | each | 22 | | |
| 2 | Demolishing cement concrete 1:3:6 & richer, including disposal of materials within 50m lead | cum | 10.52 | | |
| 3 | Demolishing brick work including stacking useful materials & disposal of rubbish within 50m lead In cement mortar | cum | 4.65 | | |
| 4 | Dismantling G.I sheets including ridges, hips, valleys, gutters & stacking materials within 50m lead | sqm | 225.72 | | |
| 5 | Dismantling trusses, rafters, purlins etc... | Lumpsu m | 1 | | |
| 6 | P/I 40mm thick marble chips flooring top layer 10mm thick with white, black or black and white marble chipsof size 6mm in proportion 1:2 on 30mm cement concrete 1:2:4, 12.5mm aggregate:In white cement. | Sq.m | 94.43 | | |
| 7 | Steel work welded, in built up sections, trusses, frame-works including cutting, hoisting, fixing and appl. priming coat of red lead paint- In Tees, angles, flats and channels | kg | 848.99 | | |
| 8 | Providing & fixing Pre-laminated Particle Board Lining with necessary screws etc. complete (excluding cost of frame)8mm | Sq.m | 175.14 | | |
| 9 | P/F, trusses, frame-work including cutting hoisting, fixing and applying priming coat of red led paint in tubular section. | Each | | | |
| | HT | Each | 4 | | |
| | T | Each | 10 | | |
| | T1 | Each | 8 | | |
| | T2 | Each | 8 | | |
| | T3 | Each | 8 | | |

| | | | | | |
|----|---|------|---------|--|--|
| | T4 | Each | 2 | | |
| 10 | Steel work welded, in built of section, trusses, frame-work including cutting hoisting, fixing and applying priming coat of red led paint in tubular section. | Kg | 1252.79 | | |
| 11 | Bhutan type Traditional Cornices in R.C.C 1:1.5:3, 20 mm aggregate including cost of formwork including finishing with 6mm thick plaster on the exposed surface with cement mortar 1:3, excluding reinforcement & decorative painting cost as per standard design (Measurement to be taken along the cornice and wall junction Single Storied building, including Phana | Mtr | 49.55 | | |
| 12 | Providing, preparing and applying Dangtshon painting (Not washable) | Sqm | 26.41 | | |
| 13 | Providing & laying Concrete Solid Block Masonry (115 mm) in superstructure below floor 2 level In cement mortar 1:4 | Sqm | 126.95 | | |
| 14 | Providing & laying 20mm cement plaster C.M 1:5 | Sqm | 268.39 | | |
| 15 | Providing & applying putty of thickness 2mm or more over plastered surface to prepare the surface even and smooth complete | Sqm | 268.39 | | |
| 16 | Providing and applying finishing coats Vinyl plastic emulsion paint, for cement, masonry, plaster, two coats on new work | Sqm | 268.39 | | |
| 17 | Providing & fixing Thermo-Mechanically Treated reinforcement bar (Yield Strength 500 MPa) for R.C.C work including cutting, bending, binding and placing in position complete | Kg | 745.75 | | |

| | | | | | |
|----|---|------|--------|--|--|
| 18 | Providing & laying in position reinforced cement concrete work in walls (any thickness) including attached pilasters buttresses, piers, abutments etc. upto floor five level excluding the cost of centering, shuttering and reinforcement 1:2:4 (1 cement : 2 sand : 4 graded crushed rock 20 mm nominal size) | Cum | 5.24 | | |
| 19 | Providing & fixing Pre Painted Steel Corrugated Roofing sheets, including bolts, hooks and nuts 8mm dia. with bitumen and G.I limpet washers filled with white lead for connection, excluding the cost of purlins, rafter and trusses. 25g (0.50mm) | Sqm | 183.34 | | |
| 20 | Providing & fixing 600mm ridges or hips in Pre Painted Steel sheets, including bolts, hooks and nuts 8mm dia G.I limpet and bitumen washers for connection. | Mtr | 23.4 | | |
| 21 | Providing and fixing PVC semicircular gutter 180mm dia including fittings, Ms clamps ect complete. | Mtrs | 48.2 | | |
| 22 | Providing & fixing G.I. pipes including G.I. fittings & clamps & repair walls 20mm | Mtrs | 60 | | |
| 23 | Providing & fixing Indian-type vitreous china w.c squatting pan, including 100 mm H.C.I P or S trap, 10 lit low level vitreous china cistern & fittings, repair walls 500mm, white | Each | 2 | | |
| 24 | Providing & fixing c.p. brass stop cock 20mm, standard, c.p knob | Each | 2 | | |
| 25 | Providing & fixing toilet paper holder C.P. brass | Each | 2 | | |
| 26 | Providing & fixing 600x450mm bevelled edge mirror (superior glass) incl.4mm A.C sheet base fixed to wooden cleats | Each | 2 | | |
| 27 | Providing & fixing P.V.C soil waste and vent pipes, single or double socketed, including pipe clip complete (excluding the cost of PVC fittings) 75mm dia | Mtr | 2.5 | | |

| | | | | | |
|----|---|------|----|--|--|
| 28 | Providing & fixing P.V.C soil waste and vent pipes, single or double socketed, including pipe clip complete (excluding the cost of PVC fittings) 110mm dia | Mtr | 30 | | |
| 29 | Providing & fixing P.V.C plain bend 110mm | Each | 2 | | |
| 30 | Providing & fixing P.V.C door bend 110mm dia | Each | 2 | | |
| 31 | Providing & fixing plastic tank including all accessories complete 500 litre capacity | Each | 1 | | |
| 32 | Providing & fixing white vitreous china wash basin, including C.I brackets, 15mm C.P. brass pillar taps, c.p. chain & rubber plug, 32mm pvc waste, 32mm dia. trap & union, repair walls Flat back wash basin 550x400mm with single 15mm c.p. brass pillar tap | Each | 2 | | |
| 33 | Providing & fixing 32mm dia pvc. waste | Each | 2 | | |
| 34 | Providing & fixing P.V.C soil waste and vent pipes, single or double socketed, including pipe clip complete (excluding the cost of PVC fittings) | Mtr | 2 | | |
| 35 | Providing & fixing flush door shutters (pre-fabricated), block-board core with ply veneer, chemically treated .35mm thick with brass tower bolt, brass handle and brass door bolts etc.. | Each | 1 | | |
| 36 | Providing & fixing Precast RCC door frame and block board shutter-35mm thick - Door type M D-2.4 complete as per drawing | Each | 1 | | |
| 37 | Providing & fixing flush door shutters (pre-fabricated), block-board core with ply veneer, chemically treated .35mm thick with brass tower bolt, brass handle and brass door bolts etc.. | Each | 7 | | |
| 38 | Providing & fixing Precast RCC door frame and block board shutter-35mm thick - Door type D-900mm complete as per drawing | Each | 7 | | |

| | | | | | |
|----|--|------|-------|--|--|
| 39 | Providing & fixing flush door shutters (pre-fabricated), block-board core with ply veneer, chemically treated .35mm thick with brass tower bolt, brass handle and brass door bolts etc.. | Each | 2 | | |
| 40 | Providing & fixing Precast RCC door frame and block board shutter-35mm thick - Door type D-700mm complete as per drawing | Each | 2 | | |
| 41 | Steel work in welded or built up sections, frame works including cutting, hoisting, fixing and applying priming coat of red lead paint in M/S In Tees, angles and channels and Rectangular tube of 100x50x3.2mm for window frame with aluminium shutter including U-rubber gasket and glass panes etc.. W3 | Each | 8 | | |
| 42 | Steel work in welded or built up sections, frame works including cutting, hoisting, fixing and applying priming coat of red lead paint in M/S In Tees, angles and channels and Rectangular tube of 100x50x3.2mm for window frame with aluminium shutter including U-rubber gasket and glass panes etc.. W2 | Each | 3 | | |
| 43 | Steel work in welded or built up sections, frame works including cutting, hoisting, fixing and applying priming coat of red lead paint in M/S In Tees, angles and channels and Rectangular tube of 100x50x3.2mm for window frame with aluminium shutter including U-rubber gasket and glass panes etc.. V | Each | 2 | | |
| 44 | Providing and fixing 150x12mm, with 25mm dia wooden curtain rod and bracked including M.S flat 25x3x100.. And plugs etc complete champ wood, pelmets | mtr | 39.95 | | |
| 45 | Providing and fixing heavy Duty cement fiber board 300 width x 15mm thick (eave board) | Mtr. | 57.8 | | |

| | | | | | |
|----|---|------|--------|--|--|
| 46 | Providing and laying 50mm thick Plinth Protection and grouted with fine sand mix including well rammed, finishing the top smooth With cement concrete 1:3:6, 20mm aggregates, laid over 75mm thick layer of compacted gravel (40mm) | Sqm | 136.41 | | |
| 47 | Constructing second class brick masonry open surface drain in cement mortar 1:4 including earth work in excavation 100 mm thick concrete bed 1:5:10, 40mm aggregate and 25mm thick cement concrete 1:2:4, 12 mm aggregate for filling haunches including 12mm cement plastering 1:4 with a floating coat of neat cement and disposal of surplus 150mm x 200mm depth earth etc. complete | Mtr | 60.8 | | |
| 48 | Excavation in foundation trenches or drains not exceeding 1.5 in width or area 10 sq.m on plan incl. dressing & ramming, disp. of surplus soil within 50m lead & 1.5m lift: Ordinary Soil | Cum | 1.49 | | |
| 49 | Providing and laying Hand packed stone filling or soling with stones) | cum | 0.17 | | |
| 50 | Providing and laying in position plain cement concrete excluding the cost of centering and shuttering - All work upto plinth level 1:3:6 (1 cement : 3 sand : 6 graded crushed rock 20 mm nominal size) | cum | 1.61 | | |
| 51 | Providing & laying G.I. pipes including G.I. fittings | m | 2.26 | | |
| 52 | Providing & laying G.I. pipes including G.I. fittings | m | 11 | | |
| 53 | Supply and installation of GRC Dorji Jadram for Flag pole Base as per photograph attached. O/a size 1950x1950 mm | each | 1 | | |
| 54 | Surface dressing of ground, including removal of vegetations and inequalities < 150mm deep, disposal of rubbish within 50m lead and 1.5m lifts | Sqm | 100 | | |
| | | | | | |

| | | | | | |
|--|--|-----|------|--|--|
| 55 | Excavation in foundation trenches or drains not exceeding 1.5m in width or area 10 sq.m on plan, including dressing & ramming, disposal of surplus soil within 50m lead & 1.5m lift | cum | 30 | | |
| 56 | Providing & laying sand bedding, including watering, ramming, dressing | Cum | 5 | | |
| 57 | Providing & laying Random Rubble Masonry with hard stone in foundation & plinth In cement mortar 1:5 | cum | 1.25 | | |
| 58 | Providing and fixing at or near ground level pre-cast cement concrete in kerbs, edgings etc. as per approval pattern and setting in position with cement mortar 1:3 (1 cement : 3 sand) cost of required formwork and finishing smooth with 6 mm thick cement plaster on exposed surface complete - 1:2:4 (1 cement : 2 sand : 4 graded crushed rock 20 mm nominal size)- 500X375X75mm thick | cum | 1.41 | | |
| 59 | Providing and laying precast Druk Mosaic Tiles pavement. | sqm | 100 | | |
| Grand Total | | | | | |
| Contractor's Seal and Sign for every pages | | | | | |

Name of work:-Electrification of Geog Office,Sompangkha

BOQ

| SI No | Code | Description of items | Qty | Unit | Rate in Figure | Amount |
|-------|--------|---|-----|-------|----------------|--------|
| | | DISMANTLING & DEMOLITION | | | | |
| 1 | | Dismantling of Electrical wiring including conduits for light, fan, Exhaust fan, call bell, 3 pin 5 ampere plug point, circuit / submain wiring etc and stacking materials within 50m lead including making the surface good | | | | |
| | DS0001 | short point | 10 | Point | | |
| | DS0002 | medium point | 10 | Point | | |
| | DS0003 | long point | 10 | Point | | |
| | DS0004 | Circuit, submain wiring, general wiring | 250 | m | | |
| 2 | | types and stacking materials within 50m lead including making the surface good: | | | | |
| | DS0015 | Pendent/ recessed/ surface | 55 | each | | |
| | | wiring | | | | |
| 3 | | Wiring for light, fans, call bell and 2 pin light socket outlet with 1.5 sq.mm 1.1kV grade, PVC insulated copper conductor cable in PVC casing and capping including connections, painting, testing & commissioning etc., as required. | | | | |
| | WP0105 | Short Point | 15 | Point | | |
| | WP0106 | Medium Point | 5 | Point | | |
| | WP0107 | Long Point | 10 | Point | | |
| 4 | | Wiring for 5/6 pin, 6/16 ampere plug point with 4 sq.mm 1.1kV grade,PVC insulated copper conductor cable in PVC casing & capping with providing and fixing 5/6 pin, 6/16 ampere socket outlet & switch including earthing the third pin,connections, painting, testing & commissioning etc. as required | | | | |
| | WP0145 | Short Point | 13 | Point | | |
| | WP0146 | Medium Point | 13 | Point | | |
| | WP0147 | Long Point | 15 | Point | | |
| | | SWITCHES AND SOCKETS | | | | |
| 5 | | Supplying & fixing of switch on existing metal box including necessary cutting, connection testing etc. as required. | | | | |
| | SS0001 | 6 Amps, SP, 1-way | 30 | each | | |
| | MT5817 | Supplying and fixing of fan regulator, 230 volts, A.C | 7 | each | | |
| 6 | | Supplying & fixing of Ceiling Rose, on existing metal box with fibre sheet cover including necessary cutting, connection testing etc. as required | | | | |
| | SS0107 | 2 plate (PVC) 6A | 22 | each | | |
| | BX0022 | 3 Module | 1 | each | | |
| | BX0023 | 4 Module | 5 | each | | |
| | BX0024 | 6 Module | 5 | each | | |

| | | | | | | |
|----|--------|---|----|------|--|--|
| | BX0025 | 8 Module | 4 | each | | |
| | | FITTINGS | | | | |
| 7 | | Supplying of Ceiling fan 240 volt A.C with all accessories such as down rod, sweep 3 Nos., canopy 2 Nos., condenser and fan body etc. complete as required | | | | |
| | FN0003 | 1400 rpm, 1400mm sweep | 7 | each | | |
| 10 | | Supplying of prewired indoor fluorescent lamp luminaires housing of CRCA sheet steel rail, end with lamp holders, electronic choke, starter, starter holder, terminal block etc. but without lamp, LPF suitable for wall and ceiling. Phillips/Bajaj | | | | |
| | IL0158 | Strip Rail 36/40 watt | 14 | each | | |
| 11 | LS0127 | Supplying of fluorescent lamps 250 volts A.C TLF lamp 36/40 watt | 14 | each | | |
| 12 | MT5892 | Supplying and fixing of Angle/batten holder (heavy duty), 230 Volt, A.C with circular box complete with all accessories as required but without lamp. | 9 | each | | |
| 13 | MA-RT | Supplying and fixing of 40 watt CFL lamp, 230 Volt, A.C | 9 | each | | |
| | | CONTROL GEARS | | | | |
| 14 | | Supply of TPN distribution board (DIN type, horizontal) without door, 415 volt A.C complete with all accessories without MCB/isolator/RCCB out going or incoming etc. as required | | | | |
| | GB0536 | 12 way | 1 | each | | |
| 15 | | Supply of MCB isolator triple pole, 415 volt A.C complete with all accessories suitable to fix on a din-bar etc. as required | | | | |
| | GB0396 | 63A | 1 | each | | |
| 16 | | 230 volt A.C complete with all accessories suitable to fix on a din-bar etc. as required | | | | |
| | GB0270 | 6A | 12 | each | | |
| | GB0272 | 16A | 24 | each | | |
| | | ERECTION/INSTALLATION | | | | |
| | | Luminaires Installation | | | | |
| 17 | | Erection of all indoor/outdoor surface type wall bracket (single or double)/ surface ceiling fittings GLS lamps/ bulk head GLS lamp / all types call bell / all type picture or mirror lighting luminaires fittings with all accessories, fixing of lamp, testing etc. as required including connection with PVC insulated copper conductor | | | | |
| | EI0002 | 1.5 sq.mm single core cable 1.1 KV grade | 30 | each | | |
| 18 | | Installation, testing and commissioning of prewired fluorescent fittings of all surface type complete with all accessories and tubes directly on ceiling/wall as required including connection with PVC insulated copper conductor | | | | |
| | EI0041 | 1.5 sq.mm single core cable 1.1 KV grade | 30 | each | | |
| | | Fan Installation | | | | |

| | | | | | | |
|----|--------|--|----|------|--|--|
| 19 | | Installation, testing and commissioning of all size ceiling fan and regulator including wiring the down rod of standard length upto 300mm with PVC insulated copper conductor | | | | |
| | EI0096 | 1.5 sq.mm single core cable 1.1 KV grade | 7 | each | | |
| | | | | | | |
| | | Distribution Boards Installation | | | | |
| 20 | | Installation, testing and commissioning of TPN DB (DIN type, horizontal/vertical) with no door, metal door or arcylic door (double/single door) complete with all accessories to accommodate incoming RCCB/ELCB/RCBO FP 125A sensitivity 30/100/300mA and outgoing SP MCB 6/10/16A on/in prefabricated MS surface /MS cubical control panel board including drilling holes, connections etc. as required | | | | |
| | EI0555 | 12 way | 1 | each | | |
| 21 | | Installation, testing and commissioning of SPN/DP miniature circuit breaker DIN type complete with all accessories to accommodate on/in prefabricated MS surface /MS cubical control panel board including drilling holes, connections etc as required | | | | |
| | EI0380 | 6/10/16/20A | 36 | each | | |
| | | PROTECTIONS AND EARTHING | | | | |
| 22 | | Providing and fixing of earthing including all accessories, machinery enclosure, C.I cover plate having locking arrangement, watering pipe with excavation and refilling work including charcoal or coke and salt complete as required as per standard earthing drawing | | | | |
| | ET0001 | With G.I earth plate 600x600x6mm | 1 | each | | |
| | MT6535 | 6 SWG G.I wire | 35 | m | | |
| 23 | | Providing and fixing of earthing including all accessories, machinery enclosure, C.I cover plate having locking arrangement, watering pipe with excavation and refilling work including charcoal or coke and salt complete as required as per standard earthing drawing | | | | |
| | ET0002 | With copper earth plate 600x600x3mm | 1 | each | | |
| | MT6536 | Copper wire, 4mm dia (8swg) | 80 | m | | |
| 24 | | Providing and fixing lightning conductor including holes etc. complete as required | | | | |
| 25 | LG0001 | 25mm dia 300mm long copper tube single prong at top with 85mm dia 3mm thick copper base plate | 1 | each | | |
| 26 | BPCR | Supplying and fixing of three phase energy meter, 230 Volt, A.C complete with all accessories as required. | 1 | each | | |
| | | UNDER GROUND CABLES | | | | |
| 27 | | Supplying of 4- Core 1.1KV grade PVC insulated and sheathed Copper conductor armoured power cables | | | | |

| | | | | | | |
|----|--------|--|-----|------|--|--|
| | PC0180 | 25 sq.mm | 112 | m | | |
| | | LAYING OF UNDER GROUND CABLE | | | | |
| 28 | | Laying of one number PVC insulated and sheathed power cable copper/aluminium,armoured/un-armoured 1.1KV single core to four core direct in the ground including excavation, sand cushioning, protective covering and refilling the trenches etc. as required | | | | |
| | CL0003 | Above 25sq.mm to 70sq.mm | 70 | m | | |
| | | | | | | |
| 29 | | Providing & fixing Split Type Air Conditioners | | | | |
| | AC0016 | 1.5 tonne, split typ | 6 | each | | |
| | | Total | | | | |

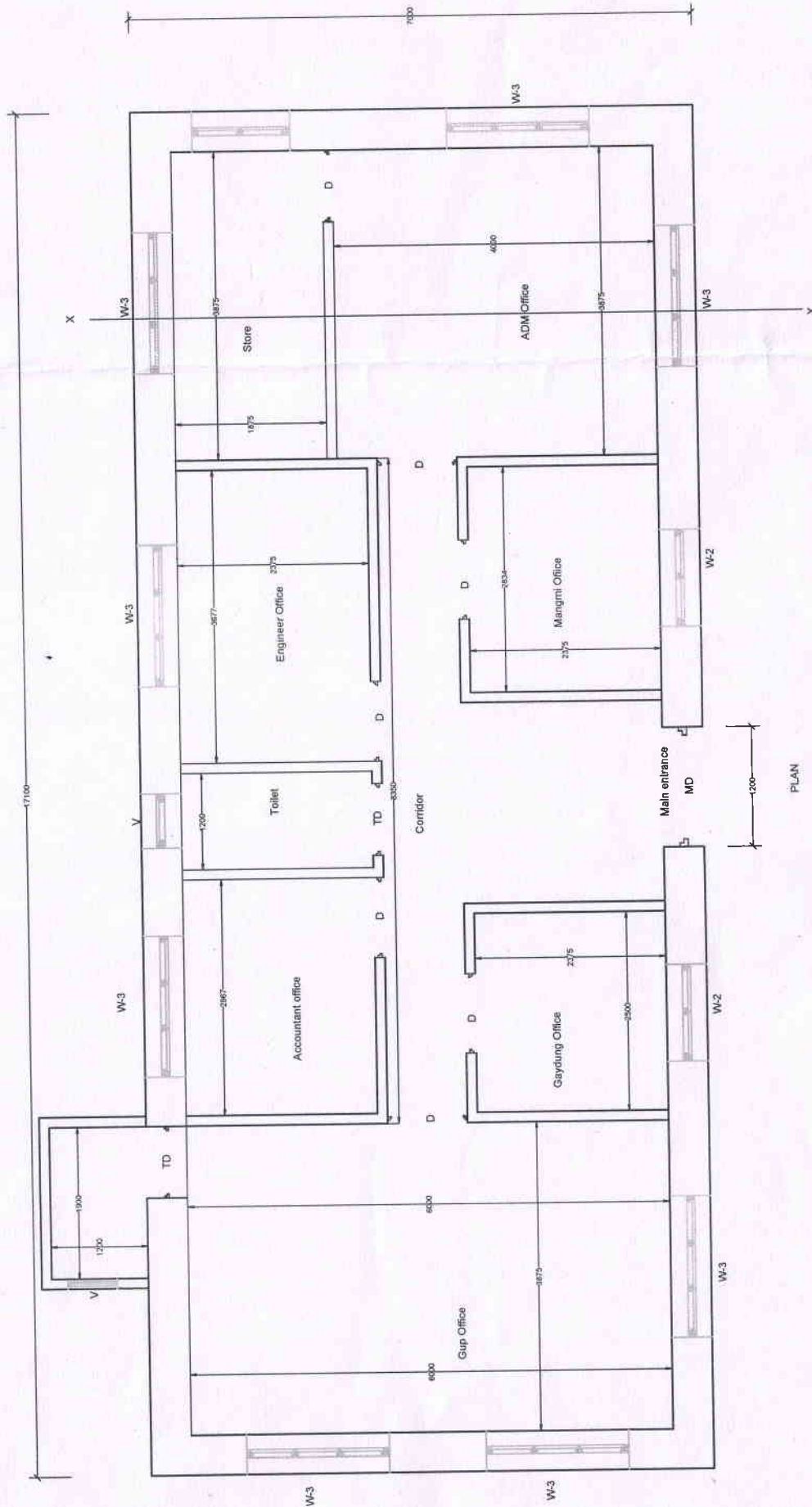
GEWOG ADMINISTRATION
SHOMPANGKHA
SARPANG

SECTION 9. DRAWINGS

Notes on Drawings

Insert here a list of Drawings. The actual Drawings, including site plans, should be attached to this section or annexed in a separate folder. The Drawings shall be dated, numbered and show the revision number.

GEWOG ADMINISTRATION
SHOMPANGKHA
SARPANG



Royal Government of Bhutan

གསལ་ཁྱབ་ཆེང་ཁག།

GEWOG ADMINISTRATION, SARPANG

Title: PLAN

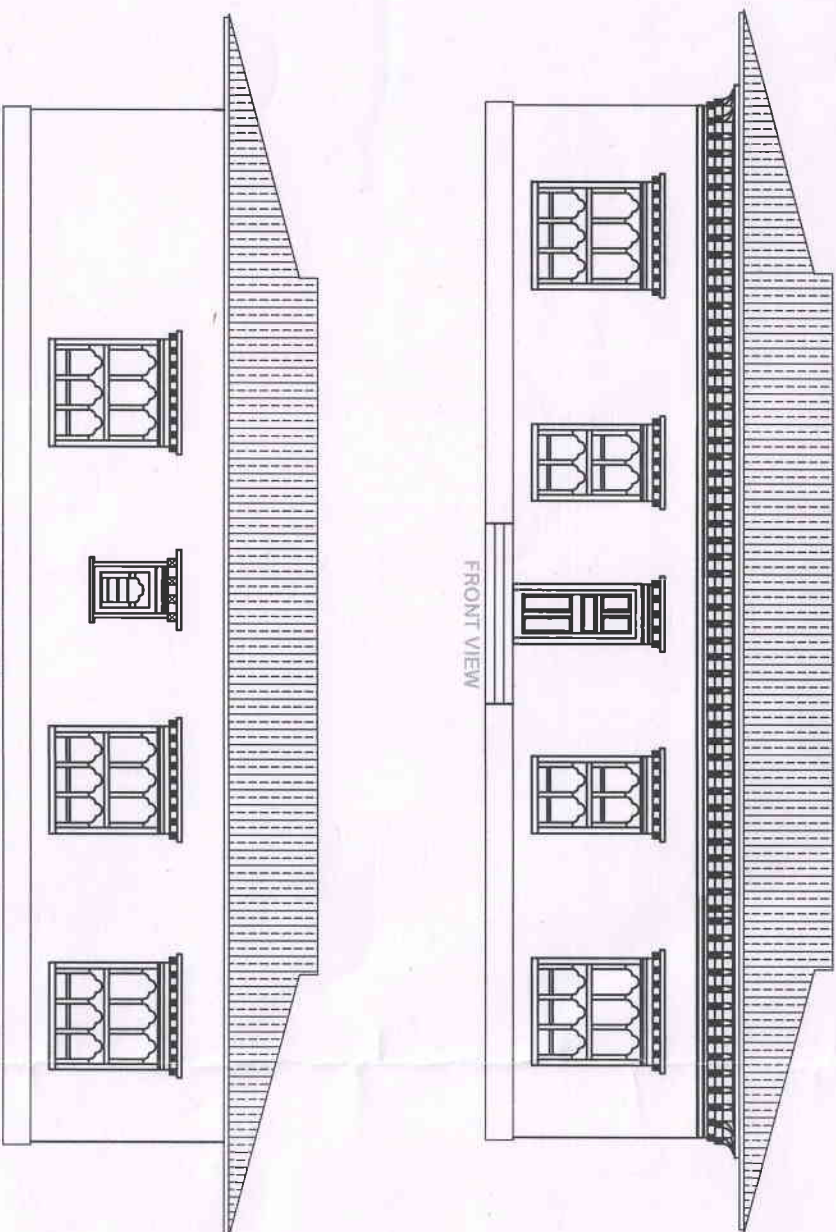
Design & Drawn: Sangay Tempa, AE

Checked: Sangay Tenzin, D.C.E

Approved:

Project Name: MAINTENANCE OF GEWOG OFFICE AT SHOMPA

Chamangkha Geog



Royal Government of Bhutan

ཀའདྲའི་ཤང་གི་རྒྱུ་ཁྲུང་།

GEWOG ADMINISTRATION, SARPANG.

Design& Drawn:Sangay Tempa,AE

Checked: Sangay Tempa, D.C.F.

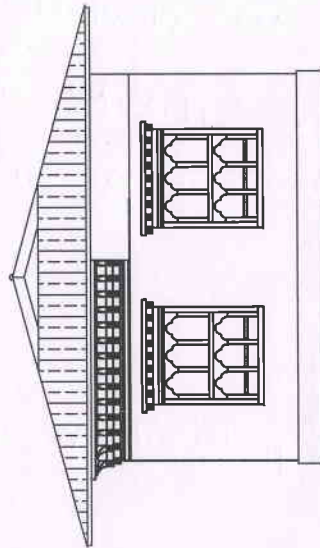
Approved:

Shompangkha Geog

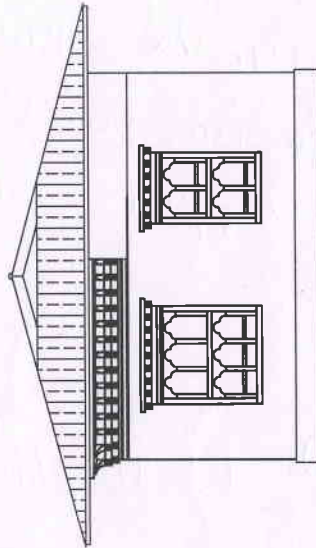
Title: FRONT & REAR VIEW.

Project Name: MAINTENANCE OF GEWOG OFFICE.

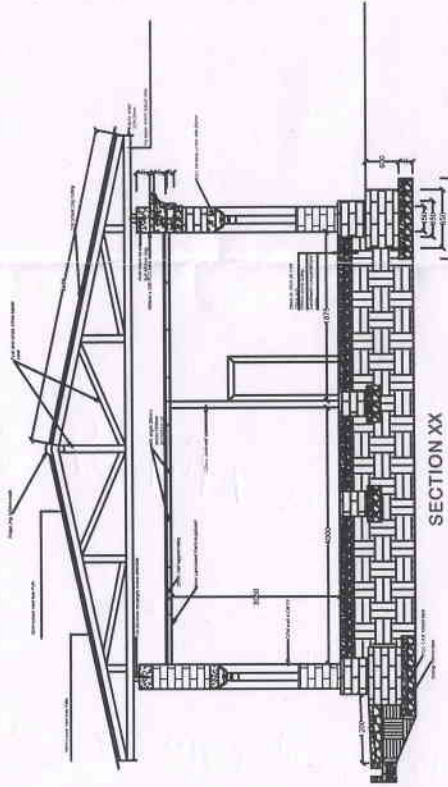
SHOMPANGKHA.



RIGHT VIEW



LEFT VIEW



SECTION XX



Royal Government of Bhutan

འཕགས་པལ་ལྷན་ཁྲིའུ་ཁྲུག་

GEWOG ADMINISTRATION, SARPANG.

Design & Drawn: Sangay Tempa, AE

Checked: Sangay Tenzin, D.C.E

Approved:

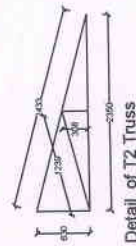
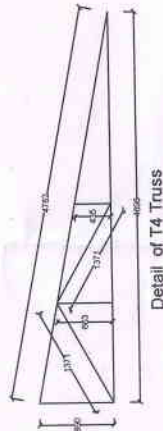
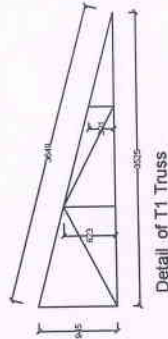
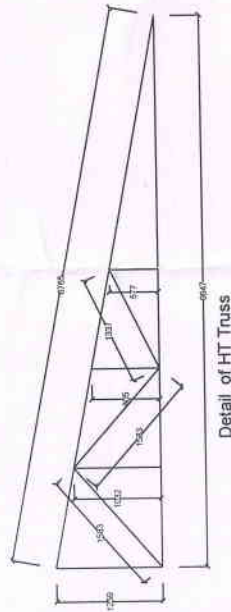
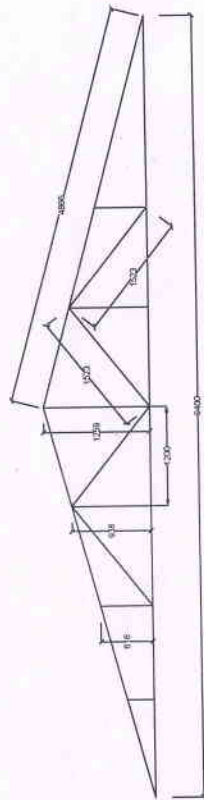
S.D. Yonzan

S.D. Yonzan
Shompangkha Geog

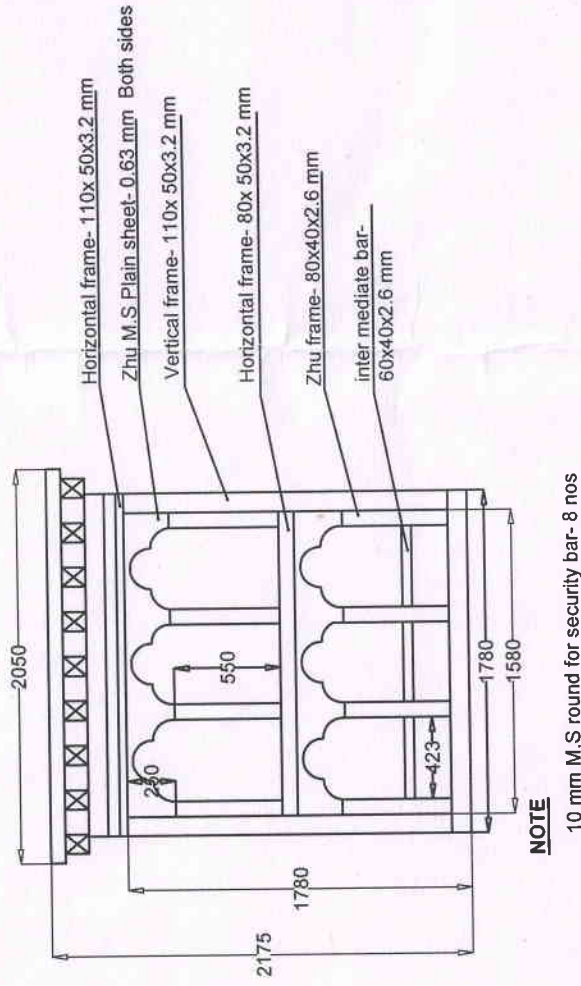
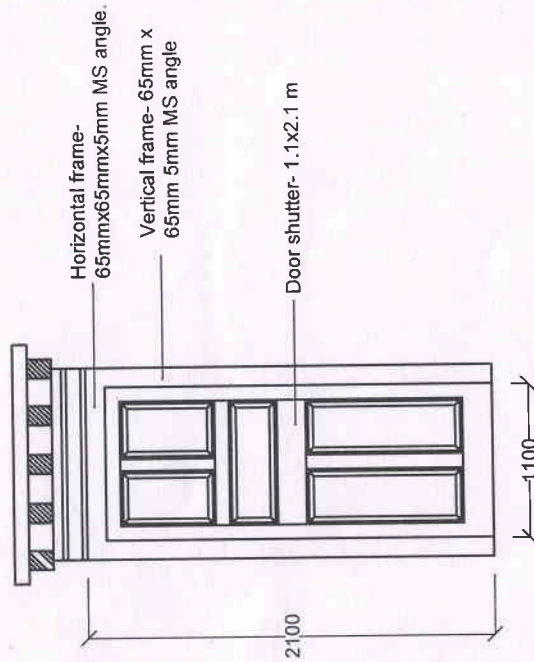
Title: SIDE VIEWS & SECTIONNING

Project Name: MAINTENANCE OF GEWOG OFFICE.

SHOMPANGKHA.



| | | |
|---|--|---|
|  <p>Royal Government of Bhutan གསལ་སྐད་རྒྱུང་རྩིང་ཁག་།</p> | <p>GEWOG ADMINISTRATION, SARPANG.</p> | |
| | <p>Design & Drawn: Sangay Tempa, AE</p> | <p>Title: TRUESS DETAILS</p> |
| | <p>Checked: Sangay Tenzin, D.C.F. S.D. Yountan</p> | <p>Project Name: MAINTENANCE OF GEWOG OFFICE.</p> |
| | <p>Approved: </p> | <p>SHOMPANGKHA.</p> |



Royal Government of Bhutan



གསལ་ཁྱེད་ཆེད་ཁག་།

GEWOG ADMINISTRATION, SARPANG.

Design & Drawn: Sangay Tempa, AE

Checked: Sangay Tenzin, D.C.E

Approved:

S. D. Yonzan

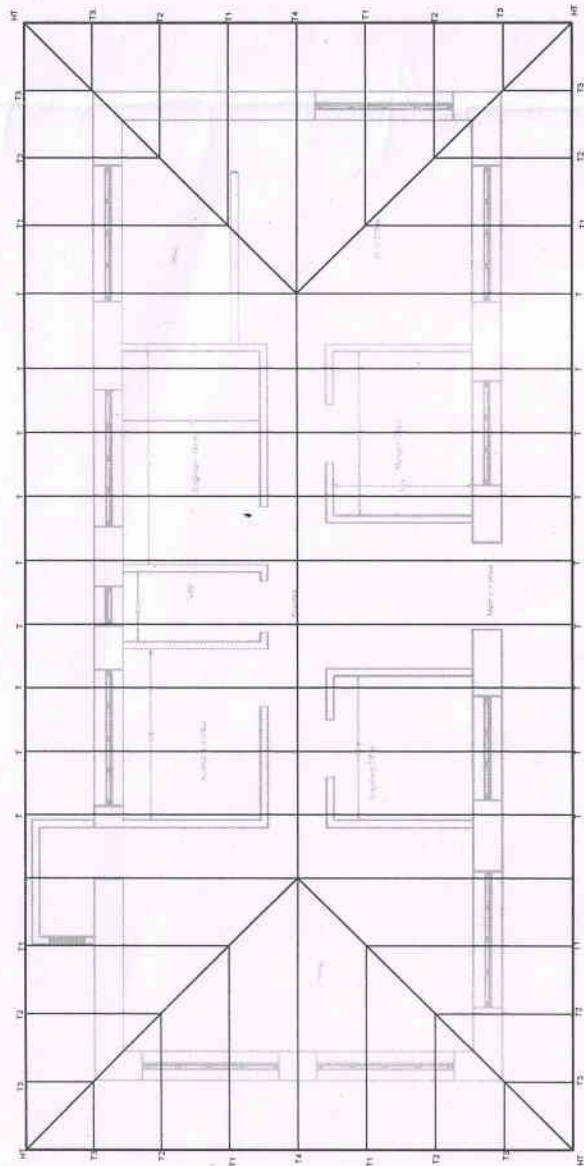
Gup

Alpha

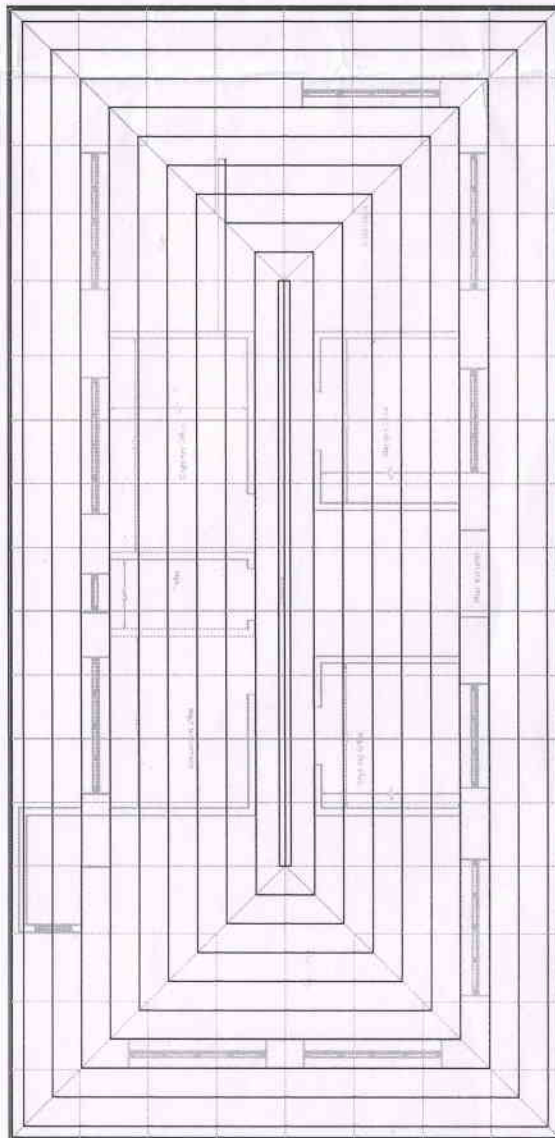
Title: DOOR & WINDOWS DETAILS

Project Name: MAINTENANCE OF GEWOG OFFICE.

SHOMPANGKHA.



Truss Layouts



Purlin Layouts

Design & Drawn: Sangay Tempa, AE

Checked: Sangay Tenzin, D.C.E

Approved:

Title: TRUSS & PURLIN DETAILS.

Project Name: MAINTENANCE OF GEWOG OFFICE.

SHOMPANGKHA.

S.D. Yonzon
 S.D. Yonzon
 S.D. Yonzon