

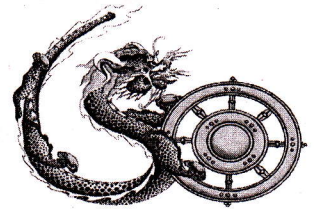
**ROYAL GOVERNMENT OF BHUTAN**  
**DUNGKHAG ADMINISTRATION**  
**GELEPHU**  
**BIDDING DOCUMENT**



Name of work:-**“Construction of Kitchen Cum Store and Two Unit PF Toilet at Royal Guest House,Gelephu”.**

Issued to M/s:- .....

Opening date:-09/11/2017      Time:-11:00 AM,Venue:- Dungkhag Conference Hall,Gelephu.



**Open Tender Bidding Invitation**

The Dzungkhag Administration, Gelephu is pleased to invite sealed bids from the interested National contractors having valid trade license and registered with Construction Development Board for the following works:

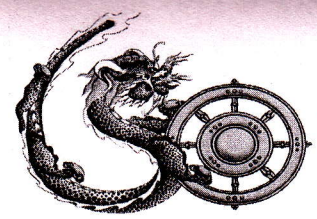
Sl. No	Name of Work	Available date on Website	Date of submission	Class of contract	Estimated amount	EMD (Nu)	Contract duration
1	Construction of Compound fencing, Gate and Security house at Thongjzor, Umling (Package II)	09/10/2017	09/11/2017	Medium	76,07,988.53	152,200.00	07 months
2	Construction of water tank and new pipe line at Tshachu	09/10/2017	09/11/2017	Small	865,591.27	17500.00	05 months
3	Construction of Kitchen cum Store and 2 unit PF Toilet at Royal Guest Houes, Gelephu	09/10/2017	09/11/2017	Small	12,14000.00	24300.00	05 months
4	Maintenance of Compound light at Royal Guest House	09/10/2017	09/11/2017	Small	196,099.81	4000	02 months

A complete set of tender documents can be downloaded from the Sarpang Dzongkhag Website ([www.sarpang.gov.bt](http://www.sarpang.gov.bt)) and CDB Website ([www.cdb.gov.bt](http://www.cdb.gov.bt)) with effect from 09/10/2017. Earnest money (EMD) should be in form of Bankers certified cheques, Demand Draft, cash warrant, Bank Guarantee in favor of **Dungpa Dzungkhag Administration, Gelephu**. Electronic bids shall not be permitted and late bids shall be rejected. Bidders are requested to check the url [www.sarpang.gov.bt](http://www.sarpang.gov.bt) from time to time for any amendments related to above works





དཔལ་ལྷན་འབྲུག་གཞུང་།  
རྒྱལ་ཁབ་བདག་སྐྱོང་ དགེ་ལྷན་ཁང་།  
ROYAL GOVERNMENT OF BHUTAN  
DUNGKHAG ADMINISTRATION  
GELEPHU: BHUTAN



Drungkhag Engineering Section

Bids shall be submitted on or before **10:30 AM** on **09/11/2017** and the tender will be opened on the same day at **11:00 AM** in the Dungkhag Conference Hall, Gelephu. Interested bidders are requested to attend the bid opening if wish so.

  
**(DASHO DUNGPA)**

**Copy to:**

1. The Dasho Dzongda Dzongkhag Administration, Sarpang for his kind information
2. The District Chief Engineer, Dzongkhag Administration, Sarpang for information.
3. The Account Officer, Dzongkhag Administration, Sarpang for information.
4. The Accountant, Dungkhag Administration, Gelephu for information.
5. The Planning Officer, Dzongkhag Administration, Sarpang for information.
6. The ICT Officer, Dzongkhag Administration, Sarpang to upload in the Dzongkhag Website.
7. Office copy.

# STANDARD BIDDING DOCUMENT

## **Procurement of Small Works (up to Nu.4 million)**



**Royal Government of Bhutan  
Dzongkhag Administration Sarpang**

**March 2011**

**(Revised August 2016)**

## Preface

This Standard Bidding Document for the Procurement of small works up to Nu. 4 million has been prepared by the Public Procurement Policy Division (PPPD) Ministry of Finance to be used for the Procurement of small works through National Competitive Bidding (NCB) in projects that are financed in whole or in part by the Royal Government of Bhutan (RGoB). It should be used in conjunction with the Procurement Rules and Regulations.

Those wishing to submit comments or questions on this Bidding Document or to obtain additional information on procurement under RGoB-financed projects may contact:

Public Procurement Policy Division (PPPD)  
Ministry of Finance  
Royal Government of Bhutan  
[pppd@mof.gov.bt](mailto:pppd@mof.gov.bt)



## **Guidance Notes on the Use of the Standard Bidding Document for small works *(This note should be deleted while preparing the bidding document)***

This guidance notes have been prepared by the PPPD to assist a Procuring Agency in the preparation and using of Standard Bidding Document (SBD), for the procurement of small Works. The Procuring Agency should also refer to the Procurement Rules and Regulations and the circulars and Notifications issued from time to time to supplement the Regulations.

The use of SBD applies for the Open bidding method and also for the limited bidding method, whereby bids are invited from a list of enlisted bidders.

Since the intention is that SBD small work should only be used for Contracts of short duration and of low risk/value, there is no provision for price adjustment. The general procurement principal shall apply.

SBD is based upon internationally acceptable model formats, which have been adapted to suit the particular needs of procurement within Bhutan. The SBD has 9 Sections, of which Section 1: (Instruction to Bidders) and Section 5: (General Conditions of Contract) must not be altered or modified under any circumstances.

The way in which a Procuring Entity addresses its specific needs is through the information provided in the **Bidding Data Sheet (BDS)** and the **Special Conditions of Contract (SCC)**, as well as in the detailed requirements of the procurement in the **Schedule of Works** and/or the **Drawings/specifications**.

SBD when properly completed will provide all the information that a Bidders need in order to prepare and submit a Bid. This should provide a sound basis on which a Procuring Agency can fairly, transparently and accurately carry out a Bid evaluation process on the Bids submitted by the Bidders.

The following briefly describes the Sections of SBD and how a Procuring Entity should use these when preparing a particular Bidding Document.

### **Section 1. Instructions to Bidders (ITB)**

This Section provides relevant information to help Bidders prepare their Bids. Information is also provided on the submission, opening, and evaluation of Bids and on the award of Contract.

This Section also contains the criteria to be used by the Employer in order to determine the lowest evaluated Bid and the qualifications of the Bidder to perform the Contract. **The text of the clauses in this Section shall not be modified.**

### **Section 2. Bidding Data Sheet (BDS)**

This Section consists of provisions that are specific to each object of procurement and that supplements the information or requirements included in Section 1: Instructions to Bidders.

### **Section 3. Evaluation and Qualification Criteria**

This section contains all the criteria that the Employer shall use to evaluate bids and qualify Bidders if the bidding was not preceded by a prequalification exercise and post qualifications are applied. In accordance with ITB 34 and ITB 36, no other methods, criteria and factors shall be used. The Bidder shall provide all the information requested in the forms included in Section 4 (Bidding Forms).

### **Section 4. Bidding forms**

This Section provides the standard format for the **Bid Form** and **Bid Security** if required, that are to be submitted by the Bidder.

This Section also contains the form of the **Notification of Award (Form-2)** and the **Contract Agreement (Form-3)** which, when completed, incorporates any corrections or modifications to the accepted Bidder relating to amendments permitted by the ITB, GCC and SCC.

The forms for **Performance Security (Form-5)** and **Advance Payment Security (Form-6)**, when required, are to be completed by the successful Bidder after Contract award.

**Section 5. General Conditions of Contract (GCC)**

This Section provides the General Conditions of Contract that will apply to the Contract for which the Bidding Document is issued. **The text of the clauses in this Section shall not be modified.**

**Section 6. Special Conditions of Contract (SCC)**

This Section provides clauses specific to the Special Conditions to a particular Contract. This can be modified according to requirements specific to the contract.

**Section 7. Contract Forms**

This section contains forms which, once completed, will form part of the Contract. The forms for Performance Security and Advance Payment Security, when required, shall only be completed by the successful Bidder after Contract award.

**Section 8. Bill of Quantities**

This Section provides the items and estimated quantities of Works and Related Services to be performed, as well as the detailed Technical Specifications that describe the Works to be procured and must be carefully prepared by a Procuring Agency for each object of procurement.

**Section 9. Drawings**

This Section contains any Drawings that supplement the Schedule of Works including Specifications for the Works and Related Services to be procured.

# INVITATION FOR BID

(IFB)





ROYAL GOVERNMENT OF BHUTAN  
RGOB PROJECT

INVITATIONS FOR BIDS (IFB)  
(Required in case of open tender)

NATIONAL COMPETITIVE BIDDING

Date: 04/10/2017

Bid No.:SD/ZORIG-(02)/2017-2018/378

1. The [Dungkhag Administration, Gelephu] invites bids for the work, "Construction of Kitchen cum Store and Two Unit PF Toilet at Royal Guest House, Gelephu".
2. A complete set of tender document can be downloaded from the Sarpang Dzongkhag website with effect from 09/10/2017. Interested bidders may obtain further information at the same address.
3. Bids must be accompanied by a bid security of Nu. 24300.00/- drawn in favour of Dasho Dungpa, Administration, Gelephu. Bid security will have to be in any one of the forms as specified in the bidding document and shall have to be valid for 30 days beyond the validity of the bid.
4. Bids must be delivered to Dungkhag Adm Office on or before 10:30 AM on 09/11/2017 and will be opened on the same day at 11:00 AM, in the presence of the bidders who wish to attend.

Contents

INVITATIONS FOR BIDS (IFB).....	6
---------------------------------	---

<b>Section 1: Instructions to Bidder (ITB)</b>	<b>9</b>
<b>A. General</b>	<b>9</b>
1. Scope of Tender	9
2. Corrupt Fraudulent Collusive or Coercive Practices	9
3. Eligible Bidders	10
4. Site Visit	10
<b>B. Content of Bidding Document</b>	<b>10</b>
5. Contents of Bidding Documents	10
6. Clarification of Bidding Documents	10
7. Amendment of Bidding Documents	10
<b>C. Preparation of Bids</b>	<b>11</b>
8. One Bid per Bidder	11
9. Bid Preparation Costs	11
10. Language of Bid	11
11. Documents comprising the Bid	11
13. Alternative Bid	11
14. Bid Price and Discount	11
15. Currencies of Bid and Payment	12
16. Documents comprising the Technical Proposal	12
17. Documents establishing the Qualification of the Bidder	12
18. Bid Validity	12
20. Format and Signing of Bid	12
<b>D. Submission and Opening of Bids</b>	<b>13</b>
21. Sealing and Marking of Bids	13
22. Bid Submission Deadline	13
23. Late Bids	13
24. Modification, Substitution or Withdrawal of Bids	13
25. Bid Opening	13
<b>E. Tender Opening and Evaluation</b>	<b>14</b>
26. Confidentiality	14
27. Clarification	14
28. Bidder: Contacting the Employer	14
29. Determination of Responsiveness	14
30. Non Conformities, Errors and Omissions	14
31. Evaluation and Comparison of Tenders	15
32. Employer's Right to Accept or Reject any or all	15
<b>F. Contract Award</b>	<b>15</b>
33. Award Criteria	15
34. Letter of Intent to Award the Contract/ Notification of Award	15
35. Complaints	16
<b>Section 2 - Bidding Data Sheet</b>	<b>17</b>
<b>A. General</b>	<b>17</b>
<b>B. Bidding Documents</b>	<b>17</b>
<b>C. Preparation of Bids</b>	<b>17</b>
<b>D. Submission and Opening of Bids</b>	<b>18</b>
<b>F. Award of Contract</b>	<b>18</b>
<b>Section 3 – Evaluation and Qualification Criteria</b>	<b>19</b>
<b>Section 4: Forms of Bid &amp; Qualification Information</b>	<b>19</b>
Standard Form: Form of bid	20
Standard Form: Qualification Information	21
Standard Form: Letter of Intent	22

<b>Standard Form: Letter of Acceptance</b> .....	<b>23</b>
<b>Bank Guarantee for Bid Security</b> .....	<b>24</b>
<b>Section 5. General Conditions of Contract</b> .....	<b>25</b>
1. Definitions .....	25
2. Interpretation & Documents forming the Contract .....	25
3. Corrupt, Fraudulent, Collusive or Coercive Practices .....	26
4. Governing Language and Law .....	26
5. Engineer's Decision.....	26
6. Delegation.....	26
7. Communications and Notices .....	27
8. Sub- Contracting .....	27
9. Contractor's Personnel .....	27
10. Welfare of Labourers & Child Labour .....	27
11. Safety, Security and Protection of the Environment .....	27
12. Access to the Site .....	27
13. Documents, Information. ....	27
14. Property.....	27
15. Insurance .....	27
16. Possession of the Site .....	27
17. Commencement of Works.....	28
18. Completion of Works.....	28
19. Programme of Works .....	28
20. Early Warning.....	28
21. Compensation Events.....	28
22. Non-Scheduled Items of Works.....	28
23. Schedule of Works .....	28
24. Payment Certificates .....	28
25. Payments and Currency.....	28
26. Retention.....	29
27. Liquidated Damages .....	29
28. Performance Security.....	29
29. Price Adjustment.....	29
30. Completion.....	29
31. Correction of Defects.....	29
32. Taking Over .....	29
33. Final Account.....	30
34. Termination.....	30
35. Payment upon Termination .....	31
36. Release from Performance .....	31
37. Force Majeure .....	31
38. Settlement of Disputes.....	32
<b>Section 6. Special Conditions of Contract</b> .....	<b>32</b>
<b>Section 7 – Contract Forms</b> .....	<b>36</b>
Form-1 .....	37
Form-2.....	38
Contract Agreement .....	38
Form-3.....	39
Bank Guarantee for Performance Security.....	39
Bank Guarantee for mobilisation advance .....	40

## Section 1: Instructions to Bidder (ITB)

### A. General

1. Scope of Tender
  - 1.1 The Employer, as **indicated in the BDS** issues this Bidding Document for the procurement of Works as specified in Section 6 (Employer's requirement): The name, identification and identification of this bidding are **provided in the BDS**.
  - 1.2 The successful Bidder will be required to complete the Works within the Time for Completion stated in the Special Conditions of Contract (SCC).
  - 1.3 Throughout this Bidding Documents;
    - (a) The term "in writing means communicated in written form with proof of receipt;
    - (b) If the context so requires, singular means plural and vice versa; and
    - (c) "day" means calendar day.
2. Corrupt Fraudulent Collusive or Coercive Practices
  - 2.1 The Royal Government of Bhutan requires that Employers and the Bidders shall observe the highest standard of ethics during the implementation of procurement proceedings and the execution of Contracts under public funds.
  - 2.2 In pursuance of this requirement, the Employer shall
    - (a) exclude the bidder from participation in the procurement proceeding concerned or reject a proposal for award; and
    - (b) declare a bidder ineligible, either indefinitely or for a stated period of time, from participation in procurement proceedings under public funds;
  - 2.3 If it, at any time, determines that the bidder has engaged in corrupt, fraudulent, collusive or coercive practices in competing for, or in executing, a Contract under the public funds.
  - 2.4 The Government defines, for the purposes of this provision, the terms set forth below as follows :
    - a) "**corrupt practice**" is the offering, giving, receiving or soliciting, directly or indirectly, of anything of value to influence improperly the actions of another party;
    - b) "**fraudulent practice**" is any intentional act or omission including misrepresentation, that knowingly or recklessly misleads, or attempts to mislead, a party to obtain a financial or other benefits or to avoid an obligation;
    - c) "**collusive practice**" is an arrangement between two or more parties designed to achieve an improper purpose, including to influence improperly the actions of another party;
    - d) "**coercive practice**" is impairing or harming or threatening to impair or harm, directly or indirectly, any party or the property of the party to influence improperly the actions of a party.
  - 2.5 The bidder shall be aware of the provisions on fraud and corruption stated in GCC Clause 3 and GCC Sub-Clause 34.2(d).

- 2.6 The RGoB requires that the Employer's personnel have an equal obligation not to solicit, ask for and/or use coercive methods to obtain personal benefits in connection with the said proceedings.
3. Eligible Bidders
- 3.1 Bidders of the categories **specified in the BDS** are eligible to participate in this bidding process.
- 3.2 The Employer shall invite Bids using the Open Tendering Method (National Competitive Bidding) or limited tender as applicable.
- 3.3 The bidder shall meet the qualification requirement stated in the BDS
4. Site Visit
- 4.1 The Bidders, at their own responsibility and risk, is encouraged to visit and examine the Site and obtain all information that may be necessary for preparing the bid and entering into a Contract for performance of the Works. The costs of visiting the Site shall be at the bidder's own expense.

## B. Content of Bidding Document

5. Contents of Bidding Documents
- 5.1 The sections comprising the Bidding Document are listed below and should be read in conjunction with any Amendment issued in accordance with ITB Clause 7:
- PART 1 Bidding Procedures**
- Section 1: Instructions to Bidders (ITB)
  - Section 2: Bidding Data Sheet (BDS)
  - Section 3: Evaluation and Qualification Criteria
  - Section 4: Bidding forms
  - Section 5: General Conditions of Contract (GCC)
  - Section 6: Special Conditions of Contract (SCC)
  - Section 7: Contract Forms
  - Section 8: Bill of Quantities & Specifications
  - Section 9: Drawings
- 5.2 The Employer is not responsible for the completeness of the Bidding Document and their Addenda, if they were not obtained directly from the source stated by the Employer in the Invitation for Bids.
- 5.3 The Bidder is expected to examine all instructions, forms terms, and specifications in the Bidding Documents. Failure to furnish all information or documentation required by the Bidding Documents may result in the rejection of the bid.
6. Clarification of Bidding Documents
- 6.1 A prospective Bidder requiring any clarification of the Bidding Document shall contact the Employer in writing at the Employer's address **indicated in the BDS**.
7. Amendment of Bidding Documents
- 7.1 At any time prior to the deadline for submission of Bid, the Employer may amend the Bidding Document by issuing addenda and extend the deadline for the submission of bids at its discretion. Any amendment issued shall become an integral part of the Bidding Document and shall be communicated in writing to all those who have purchased the Bidding Document.

## C. Preparation of Bids

- |                                  |   |
|----------------------------------|---|
| 8. One Bid per Bidder            | 8.1 A Bidder shall submit only one (1) Bid. A Bidder who submits or participates in more than one (1) Bid shall cause all the proposals with the Bidder's participation to be disqualified.   |
| 9. Bid Preparation Costs         | 9.1 The Bidder shall bear all costs associated with the preparation and submission of its Bids, and the Employer shall in no case be responsible or liable for those costs, regardless of the conduct or outcome of the Bidding process.  |
| 10. Language of Bid              | 10.1 All documents relating to the Bid shall be in the language specified in the BDS.   |
| 11. Documents comprising the Bid | <p>11.1 The original and copy(ies) of Bid submitted by the Bidder shall comprise the following:</p> <ul style="list-style-type: none"> <li>(a) The Bid form (in the format indicated in Section IV – Forms of Bid, Qualification Information, Letter of Acceptance, and Contract);</li> <li>(b) License and certificate</li> <li>(c) Bid Security in accordance with Clause 19;</li> <li>(d) Priced Bill of Quantities;</li> <li>(e) and any other materials required to be completed and submitted by Bidders, as specified in the BDS.</li> </ul> <p>11.2 The Instruction to Bidders, Bidding Data Sheet, General Conditions of Contract, Special Conditions of Contract, Specifications and drawings are for the information of the bidders and is not required to be submitted by the bidder,</p>   |
| 12 Letter of Bid and Schedule    | 12.1 The letter of Bid, Schedules, and all documents listed under Clause 11, shall be prepared using the relevant forms in Section 4 (Bidding Forms), if so provided in BDS. The forms must be completed without any alterations to the text, and no substitutes shall be accepted. All blank spaces shall be filled in with the information requested.   |
| 13. Alternative Bid              | 13.1 Alternative Bid shall not be considered in small works.  |
| 14. Bid Price and Discount       | <p>14.1 The prices and discounts quoted by the Bidder in the Letter of Bid and in the Schedules shall confirm to the requirements specified below;</p> <p>14.2 The bidder shall submit a bid for the whole of the works described in ITB 1.1 by filling in prices for all items of the Works, as identified in Section 4, Bidding Forms. In case of admeasurements contracts, the Bidder shall fill in rates and prices for all items of the Works described in the Bill of Quantities. Items against which no rate or price is entered by the Bidder will not be paid for by the Employer when executed and shall be deemed covered by the rates for other items and prices in the Bill of Quantities.</p> <p>14.3 The Bid price shall take into account the cost of materials, transportation, labour, taxes, levies, overheads and profit and any other cost. The Bid price shall be fixed for the duration of performance of the Contract and shall not be subject to any adjustment on any account. The Bid price shall be applicable for the whole works described in the Drawings, Specifications and Schedule of Works.</p> |



15	Currencies of Bid and Payment	15.1	All prices shall be quoted in Bhutanese Ngultrum (BTN) and shall be paid in BTN.
16	Documents comprising the Technical Proposal	16.1	The bidder shall furnish a work plan in simple bar chart and other information if provided in BDS, to demonstrate the adequacy of the Bidders' proposal to meet the work requirements and the completion time.
17	Documents establishing the Qualification of the Bidder	17.1	To establish its qualification to perform the Contract in accordance with Section 3 (Evaluation and Qualification Criteria) the Bidder shall provide the information requested in the corresponding information sheets included in Section 4 (Bidding Forms)
18	Bid Validity	18.1	Bids shall remain valid for the period <b>specified in the BDS</b> . Any Bids which does not meet the validity requirement as per the BDS shall be rejected by the Employer as non-responsive.
19	Bid Security	19.1	The Bidder shall at their option furnish, as part of the Bid, a Bid Security as <b>specified in the BDS</b> issued by any reputed Financial Institutions in Bhutan and shall be valid thirty (30) days beyond the Bid validity period. <ul style="list-style-type: none"> <li>a) Unconditional Bank Guarantee;</li> <li>b) A demand Draft; or</li> <li>c) Cash Warrant</li> </ul>
		19.2	In exceptional circumstances, prior to the expiration of the Bid validity period, the Employer may solicit the Bidder's consent to an extension of the Bid validity period. The request and responses shall be made in writing. The validity of Bid Security shall be suitably extended promptly.
		19.3	The Bid Security may be forfeited: <ul style="list-style-type: none"> <li>(a) if the Bidder withdraws the Bid after Bid opening during the period of Bid validity. Further the bidder may be excluded from future participation for a period of two years.</li> <li>(b) if the Bidder does not accept the correction of the Bid price, pursuant to clause 31; or</li> <li>(c) in the case of a successful Bidder, if the Bidder fails within the specified time limit to sign the Agreement; or furnish the required Performance Security.</li> </ul>
20	Format and Signing of Bid	20.1	The Bidder shall prepare one (1) original of the documents comprising the Bid as described in ITB Clause 11 and clearly mark it "ORIGINAL." In addition, the Bidder shall prepare the number of copies of the Bid, as specified in the BDS and clearly mark each of them "COPY." In the event of any discrepancy between the original and the copies, the original shall prevail.
		20.2	The original and each copy of the Bid shall be typed or written in indelible ink and shall be signed by the person duly authorized to sign on behalf of the Bidder.
		20.3	Any interlineations, erasures, or overwriting shall be valid only if they are signed or initialled by the person(s) signing the Bid.

## D. Submission and Opening of Bids

- 21 Sealing and Marking of Bids
- 21.1 The Bidder shall enclose the original in one (1) envelope and all the copies of the bid in another envelope, duly marking the envelopes as "ORIGINAL" and "COPY." These two (2) envelopes shall then be enclosed in one (1) single outer envelope.
- 21.2 The inner envelopes shall:
- (a) Be signed across the seals by the person authorised to sign the Bid on behalf of the Bidder;
  - (b) Be marked "ORIGINAL" and "COPY" and
  - (c) Bear the name and address of the Bidder.
- 21.3 The outer envelope shall;
- (a) Be sealed with adhesive or other sealant to prevent reopening;
- 21.4 be addressed to the Employer at the address specified in the BDS; bear a statement "DO NOT OPEN BEFORE 11:00 AM, 09/11/2017" the time and date for Bid opening as specified in the BDS.
- 21.5 If all or any envelopes are not sealed and marked as required by ITB Sub-Clause 21, the Employer **shall not reject the bids but assume no responsibility for the misplacement or premature opening of the Bid.**
- 22 Bid Submission Deadline
- 22.1 Bids must be received by the Employer at the address and no later than the date and time **specified in the BDS.**
- 22.2 Bids may be hand delivered, posted by registered mail or sent by courier.
- 22.2 The Employer may, at its discretion, extend the deadline for the submission of Bids by amending the Bidding Document in accordance with ITB Clause 7, in which case all rights and obligations of the Employer and Bidders previously subject to the deadline shall thereafter be subject to the new deadline as extended.
- 23 Late Bids
- 23.1 Late bids shall not be considered and shall be returned unopened
- 24 Modification, Substitution or Withdrawal of Bids
- 24.1 A Bidder may modify, substitute or withdraw their Bids after it has been submitted by sending a written notice before the deadline for submission of Bids.
- 25 Bid Opening
- 25.1 The Employer shall open the Bids in the presence of the bidders who is attending the bid opening, including modifications or substitutions made pursuant to ITB Clause 24. Bidders or their representatives shall be allowed to attend and witness the bid opening and shall sign a register evidencing their attendance.
- 25.2 The name of the Bidder, Bid modifications, substitutions or withdrawals, total amount of each Bid, number of corrections, discounts, and the presence or absence of requisite Bid Security, and such other details as the Employer, at its discretion, may consider appropriate, shall be read out aloud and recorded.
- 25.3 The Employer shall prepare minutes of the Bid opening. The minutes shall include, as a minimum, the name of the Bidders and whether there has been a withdrawal, substitution or modification; the Bid Price including any discounts and the presence or absence of a Bid Security, if one was required.

- 25.4 Bids not opened and read out at the Bid opening shall not be considered, irrespective of the circumstances, and shall be returned unopened to the Bidder.

## E. Tender Opening and Evaluation

- 26 Confidentiality 26.1 After the opening of Bids, information relating to the examination, clarification, and evaluation of Bids and recommendations for award shall not be disclosed to Bidders or other persons not officially concerned with the evaluation process until after the award of the Contract is announced.
- 27 Clarification 27.1 The Employer may ask Bidders for clarification of their Bids in order to facilitate the examination and evaluation of Bids. The request for clarification and the response shall be in writing, and any changes in the prices or substance of the Bid shall not be sought, offered or permitted, except to confirm the correction of arithmetical errors discovered by the Employer in the evaluation of the Bids, in accordance with ITB Clause 31.
- 28 Bidder: Contacting the Employer 28.1 Following the opening of Bids and until the Contract is signed no Bidder shall make any unsolicited communication to the Employer or try in any way to influence the Employer's examination and evaluation of Bids which may result in the rejection of bids. If any Bidder wishes to contact the Employer on any matter related to the Bidding process, it should do so in writing
- 29 Determination of Responsiveness 29.1 Prior to detailed evaluation of bids, the employer shall determine whether each bid (a) meets the eligibility criteria defined in ITB clause 3; (b) has been properly signed; (c) is accompanied by the bid security; and (d) is substantially responsive to the requirements of the bidding documents.
- 29.2 A substantially responsive Bid is one that conforms in all respects to the requirements of the Bidding Document without material deviation, reservation or omission. A material deviation, reservation or omission is one that:
- (a) affects in any substantial way the scope, quality, or performance of the Works specified in the Contract; or
  - (b) limits in any substantial way, or is inconsistent with the Bid Document, the Employer's rights or the Bidder's obligations under the Contract; or
  - (c) if rectified would unfairly affect the competitive position of other Bidders presenting substantially responsive Bids.
- 29.3 If a Bid is not substantially responsive to the Bidding Document it shall be rejected by the Employer and shall not subsequently be made responsive by the Bidder by correction of the material deviation, reservation or omission.
- 29.4 There shall be no requirement as to the minimum number of responsive Bids.
- 30 Non Conformities, 30.1 The Employer may regard a Bid as responsive even if it contains minor deviations that do not materially alter or depart from the characteristics,

Errors and Omissions		terms, conditions and other requirement set forth in the Bidding Document or if it contains errors or oversights that are capable of being corrected without affecting the substance of the Bid.
31 Evaluation and Comparison of Tenders	31.1	The Employer shall evaluate and compare only those Bids determined to be substantially responsive to the requirements of the Bidding Document. Substantially responsive Bids are those which fulfil the requirements of ITB Clauses 11 and 12.
	31.2	The evaluation will take into account corrected Bid Price and discounts (if any).
	31.3	The Employer will check substantially responsive Bids for any arithmetical errors. Where there is a discrepancy between the amounts in figures and words, the amount in words will govern. If a Bidder refuses to accept the correction, its Bids shall be rejected. The Employer shall correct arithmetical errors on the following basis: <ul style="list-style-type: none"> <li>(a) if there is a discrepancy between the unit price and the line item total, the unit price shall prevail and the total price shall be corrected, unless in the opinion of the Employer there is an obvious misplacement of the decimal point in the unit price, in which case the total price, as quoted, shall govern and the unit price shall be corrected; and</li> </ul>
32. Employer's Right to Accept or Reject any or all	32.1	The Employer reserves the right to accept any Bid, to annul the Bid proceedings, or to reject any or all Bids, at any time prior to Contract award, without thereby incurring any liability to Bidders, or any obligation to inform Bidders of the grounds for the Employer's actions.

## F. Contract Award

33. Award Criteria	33.1	The Employer shall award the Contract to the Bidders whose offer is substantially responsive to the Bidding Document and that has been determined to be the lowest evaluated Bid, provided that the Bidder is determined to be qualified to perform the Contract satisfactorily
34. Letter of Intent to Award the Contract/ Notification of Award	34.1	The Employer shall notify the concerned Bidder whose bid has been selected in accordance with ITB 33.1 in writing (in the format in Section 4-hereafter called the "Letter of Intent to Award") that the Employer has intention to accept its bid and the information regarding the name, address and amount of selected bidder shall be given to all other bidders who submitted the bid. Such notification should be communicated in writing, including by cable, facsimile, telex or electronic mail to all the bidders on the same day of dispatch. The Employer shall ensure that the same information is uploaded on their website on the same day of dispatch.
	34.2	If no bidder submits an application pursuant to ITB 35 within a period of ten (10) days of the notice provided under ITB 34.1, Prior to the expiration of the period of Bid validity, the Employer shall notify the successful Bidder, in writing that its Bid has been accepted. Until a formal contract is prepared and executed, the Notification of Award shall constitute a binding Contract.
	34.3	Within fifteen (15) working days of the receipt of the Notification of Award from the Employer, the successful Bidder shall furnish the Performance Security, in the amount specified in the BDS.
	34.4	The proceeds of the performance security shall be payable to the Employer unconditionally upon first written demand as compensation for any loss resulting from the Contractor's failure to complete its obligations under the

#### Contract

- 34.5 Within fifteen (15) working days of receipt of the notification of award, the successful Bidder shall sign, date and return it to the Employer.

#### 35.Complaints

- 35.1 The Bidder shall submit the complaint in writing within ten (10) days from the date of letter of intent to award the contract pursuant to ITB 34.1 to the Employer.
- 35.2 The Bidder may appeal to the Independent Review Body only if the Employer has not delivered the decision within the specified time, or the complainant is not satisfied with the decision of the Employer in accordance with rules and procedures of Independent Review Body.



## Section 2 - Bidding Data Sheet

Instructions for completing the Bidding Data Sheet are provided, as needed, in the notes in italics mentioned for the relevant ITB Clauses

ITB Clause	Amendment of, and Supplements to, Clauses in the Instructions to Bidders
------------	--

### A. General

ITB 1.1	<p>The Employer is [<i>Dasho Dungpa, Dungkha Administration, Gelephu</i>]</p> <p>The Name and Identification of the Contract is/are [<i>Construction of Kitchen Cum Store and Two Unit P.F Toilet at Royal Guest House, Gelephu</i> ]</p> <p>( <i>SD/ZORIG-02/2017-2018/378 dated 04/10/2017</i> )</p> <p>The Works are [<i>Civil and Electrical works</i>]</p>
ITB 3.2	<p><b>Option B: Open Tendering method</b></p> <p>All Bidders regardless of whether enlisted or not enlisted with the Dzongkhag may submit Bids provided they otherwise qualify.</p>
ITB 3.3	<p>The evaluation shall be based on the lowest price of the responsive bidder and the work will awarded to the lowest responsive bidder. [<i>Generally the selection is based on the lowest price. If there is a specific project need basic minimum technical qualification requirement should specified here</i>]</p>

### B. Bidding Documents

ITB 7.1	<p>For <u>clarification of Tenders purposes</u> only, the Employer's address is:</p> <p>Attention: [<i>Dasho Dungpa</i>]</p> <p>Address: [<i>Dungkha Administration, Gelephu</i>]</p> <p>Telephone: [17478046/77223119]</p> <p>Facsimile number: [06-365168]</p> <p>Electronic mail address: [.....]</p>
---------	--

### C. Preparation of Bids

ITB 15.1	<p>The Bid validity period shall be [60 ] days.</p> <p><i>[normally be minimum of 60 days for Works of such a simple nature]</i></p>
ITB 15.2	<p>A Bid Security in the amount of Nu. [<i>24300</i>] will be required, 30 days beyond bid validity period in the form;</p> <ol style="list-style-type: none"> <li>Unconditional Bank guarantee</li> <li>Cash warrant; or</li> <li>Demand draft</li> </ol>
ITB 16.1	<p>A simple bar chart <i>is not required</i> <i>[delete which is not appropriate]</i></p>



ITB 19.1	In addition to the original, [ <i>one</i> ] identical copy shall be submitted.
<b>D. Submission and Opening of Bids</b>	
ITB 17.2	<p>The inner and outer envelopes shall bear the following additional identification marks:</p> <p><i>[Inner envelope: [sign across the seals, marked COPY &amp; ORIGINAL, name and address of bidder.]</i></p> <p><i>Outer envelope: [Properly sealed, proper address to employer and mark, Confidential, DONOT OPEN BEFORE 11:00 AM, 09/11/2017]</i></p>
ITB 17.2	<p>For <b>Bid submission purposes</b> only, the Employer's address is:</p> <p>Attention: <i>Dasho Dungpa</i></p> <p>Address: <i>Dungkhag, Administration, Gelephu</i></p> <p>The deadline for the submission of Tenders is:</p> <p><i>09/11/2017 at 10:30 AM</i></p>
ITB 21.1	<p>The Bid opening shall take place on the same day as the closing day of the bid submission at: <i>[Dungkhag Conference Hall, Gelephu]</i></p> <p>Date: <i>[09/11/2017]; Time: [11:00 AM]</i></p>
<b>F. Award of Contract</b>	
ITB 34.2	<p>The amount of Performance Security shall be [<i>10%</i>] percent of the Contract Price.</p> <p><i>ཇོང་ཁག་བདག་སྤྱོད་གསར་མཐུན་།</i></p>

## Section 3 – Evaluation and Qualification Criteria

This section contains all the criteria that the Employer shall use to evaluate bids and qualify Bidders if the bidding was not preceded by a prequalification exercise and post qualifications are applied. Procuring Agency may apply basic minimum technical qualification requirement (manpower and equipments) only if there is a project specific need.

### 1. Evaluation

1.1 Evaluation shall be done to determine the responsiveness and the award shall be made to the lowest evaluated bidder.

## Section 4: Forms of Bid & Qualification Information

### Table of Standard Forms

Standard Form: Form of Bid

Standard Form: Letter of Intent

Standard Form: Letter of Acceptance

Standard Form: Bid security Bank Guarantee

## Standard Form: Form of bid

### *Notes on Form of Bid:*

*The Bidder shall fill in and submit this bid form with the Bid. If Bidders do not fill in the Contract Price and does not sign this Bid form, the bids will be rejected.*

\_\_\_\_\_ [date]

.....

.....

.....

We offer to execute the contract for

“.....

.....

.....”

in accordance with the Conditions of Contract accompanying this Bid for the Contract Price of

\_\_\_\_\_ [amount in figures] (\_\_\_\_\_

\_\_\_\_\_ [amount in words]

\_\_\_\_\_ Nu [name of currency]

The contract shall be paid in Ngultrums (Nu.)

This Bid and your written acceptance of it shall constitute a binding Contract between us. We understand that you are not bound to accept the lowest or any Bid you receive.

We hereby confirm that this Bid complies with the Bid validity and Bid Security required by the bidding documents and specified in the Bidding Data.

Authorized Signature: \_\_\_\_\_

### **(Affix Legal Stamp)**

Name and Title of Signatory: \_\_\_\_\_

Name of Bidder: \_\_\_\_\_

Address: \_\_\_\_\_

# Standard Form: Qualification Information

*Notes on Form of Qualification Information: The following information is to be filled in by bidders which will be used for purposes of evaluation*

## 1. Individual bidders

1.1 Constitution of legal status of Bidder [attach copy]

Place of registration: \_\_\_\_\_

Principal place of business: \_\_\_\_\_

Power of attorney of signatory of Bid [attach]

1.2 Qualifications and experience of key personnel proposed for administration and execution of the Contract. Refer BDS. The supporting documents such detailed CVs signed in original supported by certificates for qualification and experience.

Position	Name	Qualification & year of experience (general)	Year of experience in proposed position	Remarks
		དཔལ་ལྷན་འབྲུག་གཞི་རྒྱུ་		
		ཇོ་མོ་གླང་པོ་བདག་སྐྱོང་གཞི་རྒྱུ་		

# Standard Form: Letter of Intent

(Letterhead paper of the Employer)

## Notes on standard form of letter of Intent

This issuance of Letter of Intent (always before letter of acceptance) is the information of the selection of the bid of the successful bidder by the Employer and for providing information to other unsuccessful bidders who participated in the bid as regards the outcome of the procurement process

The Employer shall allow 10 days as described in ITB 34.2 between this letter of intent and letter of acceptance to allow aggrieved bidders to challenge your decision if they feel they have treated unfairly.

(Insert date)

To:-----[Name and address of the Contractor]

This is to notify you that, it is our intention to award the contract for your Bid dated-----  
[Insert date] for execution of the-----  
-----[Insert name of the contract and identification number, as given in the BDS/SCC] for the  
Contract Price of-----  
-----[Insert amount in figure and words and name of currency] as corrected and modified [if any  
corrections] in accordance with the Instructions to Bidders.

Authorized Signature:-----

Name and Title of Signatory:-----

Name of Agency:-----

CC:

[Insert name and address of all other bidders who submitted the bid]

## Standard Form: Letter of Acceptance

[letterhead paper of the Employer]

*Notes on Standard Form of Letter of Acceptance*

*The Letter of Acceptance will be the basis for formation of the Contract as described in Clauses 31 and 32 of the Instructions to Bidders. This Standard Form of Letter of Acceptance should be filled in and sent to the successful Bidder only after evaluation of bids has been completed.*

[date] \_\_\_\_\_

To: \_\_\_\_\_

[name of the Contractor]

\_\_\_\_\_ [address of the Contractor]

This is to notify that your Bid dated \_\_\_\_\_ for the execution of the contract for the construction of “\_\_\_\_\_” for the Contract Price \_\_\_\_\_ [amount in numbers] \_\_\_\_\_ [amount in words] \_\_\_\_\_ [name of currency], as corrected and modified in accordance with the Instructions to Bidders is hereby accepted by our Agency. The start date of the project is \_\_\_\_\_. The completion date for whole of the works shall be \_\_\_\_\_.

You are hereby instructed to proceed with the execution of the said Works in accordance with the Contract documents.

Authorized Signature: \_\_\_\_\_

Name and Title of Signatory: \_\_\_\_\_

Name of Agency: \_\_\_\_\_

Attachment: Agreement



# Bank Guarantee for Bid Security

*[this is the format for the Bid Security to be issued by a financial institutions in Bhutan in accordance with ITB Clause 19]*

Invitation for Bid No:

Date:

Bid Package No:

To:

[Name and address of Employer]

## TENDER GUARANTEE No:

We have been informed that *[name of Bidder]* (hereinafter called "the Bidder") intends to submit to you its Bid dated *[date of bid]* (hereinafter called "the Tender") for the execution of the Works of *[description of works]* under the above Invitation for Bids (hereinafter called "the IFB").

Furthermore, we understand that, according to your conditions Bids must be supported by a Bid Guarantee.

At the request of the Bidder, we *[name of bank]* hereby irrevocably undertake to pay you, without cavil or argument, any sum or sums not exceeding in total an amount of Nu *[insert amount in figures and words]* upon receipt by us of your first written demand accompanied by a written statement that the Bidder is in breach of its obligation(s) under the Bid conditions, because the Bidder:

- (a) has withdrawn its Bids during the period of Bid validity specified by the Bidder in the Form of Bid; or
- (b) does not accept the correction of errors in accordance with the Instructions to Bidders ITB; or
- (c) having been notified of the acceptance of the Bid by the Employer during the period of Bid validity,
  - (i) fails or refuses to furnish the performance security in accordance with the ITT, or (ii) fails or refuses to execute the Contract Form,

This guarantee will expire

- (a) if the Bidder is the successful Bidder, upon our receipt of a copy of the Performance Security and a copy of the Contract signed by the Bidder as issued by you; or
- (b) if the Bidder is not the successful Bidder, thirty days after the expiration of the Bidder's Tender validity period, being *[date of expiration of the Tender]*.

Consequently, we must receive at the above-mentioned office any demand for payment under this guarantee on or before that date.

Signature

Signature

## Section 5. General Conditions of Contract

1. Definitions
  - 1.1 The following words and expressions shall have the meaning hereby assigned to them. Boldface type is used to identify the defined terms:
    - (a) **Completion Certificate** means the Certificate issued by the Employer as evidence that the Contractor has executed the Works in all respects as per drawing, specifications, and Conditions of Contract.
    - (b) The **Completion Date** is the date of completion of the Works as certified by the Engineer, in accordance with GCC Clause 18.
    - (c) **Contract** means the Agreement entered into between the Employer and the Contractor to execute, complete and maintain the Works.
    - (d) **Contractor** means the person or corporate body whose Tender to carry out the Works has been accepted by the Employer and is named as such in the SCC.
    - (e) **Contract Price** is the price stated in the Letter of Acceptance and thereafter as adjusted in accordance with the provisions of the Contract. The **Contractor's Bid** is the completed Bid Document including the priced offer submitted by the Contractor to the Employer.
    - (f) **Days** mean calendar days.
    - (g) A **Defect** is any part of the Works not completed in accordance with the Contract.
    - (h) The **Employer** is the party named in the SCC who employs the Contractor to carry out the Works.
    - (i) The **Engineer** is the person named in the SCC, who is responsible for supervising the execution of the works and administering the Contract.
    - (j) The **Intended Completion Date** is the date specified in the SCC on which the Contractor shall complete the Works and may be revised if extension of time or an acceleration order is issued by the Engineer.
    - (k) The **Site** is the area defined as such in the SCC.
    - (l) The **Works** are what the Contract requires the Contractor to construct, install, and hand over to the Employer, as defined in the SCC.
2. Interpretation & Documents forming the Contract
  - 2.1 In interpreting the GCC, singular also means plural, male also means female or neuter, and the other way around. Headings in the GCC shall not be deemed part thereof or be taken into consideration in the interpretation or construance of the Contract. Words have their normal meaning under the language of the Contract unless specifically defined.
  - 2.2 The following documents forming the Contract shall be interpreted in the following order of priority:
    - (a) the signed Contract Agreement.
    - (b) the letter of Notification of Award.
    - (c) the completed Bid form as submitted by the Bidder.
    - (d) the Special Conditions of Contract.
    - (e) the General Conditions of Contract.

- (f) Specifications
  - (g) the Drawings.
  - (h) any other document listed in the PCC as forming part of the Contract.
  
- 3. Corrupt, Fraudulent, Collusive or Coercive Practices
  - 3.1 The Government requires that Employers, as well as Contractors shall observe the highest standard of ethics during the implementation of procurement proceedings and the execution of Contracts under public funds.
  
  - 3.2 In pursuance of this requirement, the Employer shall
    - (a) exclude the Contractor from participation in the procurement proceedings concerned or reject a proposal for award; and
    - (b) declare a Contractor ineligible, either indefinitely or for a stated period of time, from participation in procurement proceedings under public fund;
  
  - 3.3 The Government defines, for the purposes of this provision, the terms set forth below as follows:
    - (a) "corrupt practice" is the offering, giving, receiving or soliciting, directly or indirectly, of anything of value to influence improperly the actions of another party;
    - (b) "fraudulent practice" is any intentional act or omission, including a misrepresentation, that knowingly or recklessly misleads, or attempts to mislead, a party to obtain a financial or other benefit or to avoid an obligation;
    - (c) "collusive practice" is an arrangement between two or more parties designed to achieve an improper purpose, including to influence improperly the actions of another party; and
    - (d) "coercive practice" is impairing or harming, or threatening to impair or harm, directly or indirectly, any party or the property of the party to influence improperly the actions of a party.
  
  - 3.4 The Government requires that the Client's personnel have an equal obligation not to solicit, ask for and/or use coercive methods to obtain personal benefits in connection with the said proceedings.
  
- 4. Governing Language and Law
  - 4.1 The Contract as well as all correspondence and documents relating to the Contract exchanged by the Contractor and the Employer, shall be written in English unless otherwise stated in the SCC. The Contract shall be governed by and interpreted in accordance with the laws of the Kingdom of Bhutan.
  
- 5. Engineer's Decision
  - 5.1 Except where otherwise specifically stated in the SCC, the Engineer will decide Contractual matters between the Employer and the Contractor in the role as representative of the Employer.
  
- 6. Delegation
  - 6.1 The Engineer may delegate any of his duties and responsibilities to his representative, after notifying the Contractor, and may cancel any delegation, without retroactivity, after notifying the Contractor.

7. Communications and Notices	7.1 Communications between Parties pursuant to the Contract shall be in writing to the address specified in the SCC. A notice shall be effective when delivered or on the notice's effective date, whichever is later.
8. Sub- Contracting	8.1 The Contractor shall not be permitted to subcontract any part of the Works in whole or in part.
9. Contractor's Personnel	9.1 The Contractor shall employ the key personnel named in the Schedule of Key Personnel, as referred to in the SCC, to carry out the functions stated in the Schedule, or other personnel approved by the Engineer.
10. Welfare of Labourers & Child Labour	<p>10.1 The Contractor shall provide proper accommodation to his labourers and arrange proper water supply, conservancy and sanitation arrangements at the site in accordance with relevant regulations, rules and orders of the government.</p> <p>10.2 The Contractor shall comply with the applicable minimum age, labour laws and requirements of (including applicable treaties which have been ratified by) the Government of Bhutan regarding hazardous forms of child labour.</p>
11. Safety, Security and Protection of the Environment	<p>11.1 The Contractor shall throughout the execution and completion of the Works and the remedying of any defects therein :</p> <p>(a) have full regard for the safety of all persons entitled to be upon the Site and keep the Site and the Works in an orderly state;</p> <p>(b) provide and maintain at the Contractors own cost all lights, guards, fencing, warning signs and watching for the protection of the Works or for the safety on-site; and</p> <p>(c) take all reasonable steps to protect the environment on and off the Site and to avoid damage or nuisance to persons or to property of the public or others resulting from pollution, noise or other causes arising as a consequence of the Contractors methods of operation.</p>
12. Access to the Site	12.1 The Contractor shall allow the Engineer and any person authorised by the Engineer access to the Site and to any place where work in connection with the Contract is being carried out or is intended to be carried out.
13. Documents, Information.	13.1 The Contractor shall furnish to the Engineer all information, schedules, calculations and supporting documentation that may be requested of it.
14. Property	14.1 If the contract is terminated by the Employer because of the contractors default, then, the contractor shall not be allowed to remove any materials on the Site, Plant, and Temporary Works until the matter is amicably resolved.
15. Insurance	<p>15.1 The Contractor shall provide insurance as stated in the SCC</p> <p>15.2 The Contractor shall deliver policies and certificates of insurance to the Engineer, for the Engineer's approval, before the Start Date.</p> <p>15.3 If the Contractor does not provide any of the policies and certificates required, the Employer may effect the insurance which the Contractor should have provided and recover the premiums the Employer has paid from payments otherwise due to the Contractor or, if no payment is due, the payment of the premiums shall be a debt due.</p>
16. Possession of the Site	16.1 The Employer shall give possession of the Site, or parts of the Site, to the Contractor on the date(s) specified in the SCC.

17. Commencement of Works	17.1	The Contractor may commence execution of the Works on the Start Date, or other such date as specified in the SCC, and shall carry out the Works in an expeditious manner.
	17.2	If the Contractor fails to commence the works within the above stated period, the Employer may, at his sole discretion, terminate the Contract and forfeit the Performance Security, if any.
18. Completion of Works	18.1	The Contractor shall complete the Works within the number of days stated in the SCC from the date of commencing the Works on the Site.
19. Programme of Works	19.1	Within the time stated in the SCC, the Contractor shall submit to the Engineer for approval a work program. The Contractor shall submit to the Engineer for approval an updated Programme at intervals no longer than the period stated in the SCC.
20. Early Warning	20.1	The Contractor shall warn the Engineer at the earliest opportunity of specific likely future events or circumstances that may adversely affect the quality of the work result in increase to the Contract Price or delay in the execution of the Works.
21. Compensation Events	21.1	The following shall be Compensation Events: (a) the Employer does not give access to the Site or part of the Site by the Site Possession Date stated in the SCC; and (b) if the payment is delayed pursuant to Clause 25.1.
	21.2	If a Compensation Event would prevent the work being completed before the Intended Completion Date, the Intended Completion Date shall be extended, as appropriate, by the Engineer.
22. Non-Scheduled Items of Works	22.1	The Contractor shall be paid for non-scheduled items of works only when the Engineer approves such works and at the rates and in the manner stated in the SCC.
23. Schedule of Works	23.1	The Schedule of Works will contain rates for all items for the construction including temporary works, installation, testing, and commissioning work to be done by the Contractor.
	23.2	The Contractor shall be paid for the quantity of the work done at the rate in the Contract Agreement for each item.
	23.3	The Contractor shall be entirely responsible for all taxes, duties, license fees, and other such levies imposed outside and inside Bhutan.
24. Payment Certificates	24.1	The Contractor shall submit to the Engineer monthly statements of the estimated value of the work executed less the cumulative amount certified previously. The Engineer shall check the Contractor's monthly statement and certify the amount to be paid to the Contractor.
	24.2	The value of work executed shall be determined by the Engineer.
	24.3	The value of work executed shall comprise the value of the quantities of the items in the Schedule of Works completed.
	24.4	The value of work executed shall include the valuation of Variations, Certified Dayworks and Compensation Events.
	24.5	The Engineer may exclude any item certified in previous certificates or reduce the proportion of any item previously certified in any certificate in the light of later information.
25. Payments and Currency	25.1	The Employer shall pay the Contractor the amounts certified by the Engineer within thirty (30) days of the date of each certificate.

	25.2	The Employer shall make Advance Payment (mobilization and secured advance) to the Contractor of the amounts and by the dates stated in the SCC against provision by the Contractor of an unconditional Bank Guarantee, (Form 4).
	25.3	The Contractor is to use the advance payment only to pay for Equipment, Plant, Materials, and mobilisation expenses required specifically for the execution of the Contract. The Contractor shall demonstrate that the advance payment has been used in this way by submitting copies of invoices or other documents to the Employer.
	25.4	The advance payment shall be repaid by deducting proportionate amounts from payments otherwise due to the Contractor, following the schedule of completed percentages of the Works on a payment basis. No account shall be taken of the advance payment or its repayment in assessing valuations of work done, variations, claims or any amount payable due to failure to complete the works.
26. Retention	26.1	The Employer shall retain from each payment due to the Contractor the proportion stated in the SCC until the completion of the whole of the Works.
	26.2	On completion of the whole of the Works, half the total amount retained shall be repaid to the Contractor, the remaining half when the Defects Liability Period has passed and the Engineer has certified that all Defects notified by the Engineer to the Contractor before the end of this period have been corrected.
27. Liquidated Damages	27.1	The Contractor shall pay liquidated damages to the Employer at the rate per day stated in the SCC for each day that the Completion Date is later than the Intended Completion date for the works or for any part thereof.
28. Performance Security	28.1	Upon Notification of Award, a Performance Security shall be provided to the Employer in the amount and form stated in the Contract Forms (Form 3). The Performance Security shall be valid until a date thirty (30) days from the date of issue of the Certificate of Completion.
29. Price Adjustment	29.1	The rates and prices in the bill of quantities are fixed for the duration of the Contract and not subject to price adjustment during the performance of the Contract.
30. Completion	30.1	The Contractor shall request the Engineer to issue a Certificate of Completion of the Works, and the Engineer will do so upon deciding that the work is substantially completed.
31. Correction of Defects	31.1	The Engineer shall give notice to the Contractor of any Defects before the end of the Defects Liability Period, which begins at Completion, and is defined in the SCC. The Defects Liability Period shall be extended for as long as the Defects remain to be corrected.
	31.2	If the Contractor has not corrected a Defect within the time specified in the Engineer's notice, the Engineer will assess the cost of having the Defect corrected, and the Contractor will pay this amount.
32. Taking Over	32.1	The Employer shall take over the Site and the Works within seven (7) days of the Engineer issuing a Certificate of Completion.



33. Final Account
- 33.1 The Contractor shall supply the Engineer a detailed account of the total amount that the Contractor considers payable under the Contract. The Engineer shall certify any final payment that is due to the Contractor within twenty-one (21) days of receiving the Contractor's account if it is correct and complete.
- 33.2 The Employer shall effect payment of the final account within thirty (30) days from the date of certification by the Engineer.
34. Termination
- 34.1 The Employer or the Contractor by giving thirty (30) days written notice of default to the other party, may terminate the Contract in whole or in part if the other party causes a fundamental breach of Contract.
- 34.2 Fundamental breaches of the Contract shall include, but shall not be limited to, the following:
- (a) the Contractor stops work for more than thirty (30) days when no stoppage of work is shown on the current Programme and the stoppage has not been authorised by the Engineer;
  - (b) the Engineer gives notice that failure to correct a particular defect is a fundamental breach of Contract and the Contractor fails to correct it within a reasonable period of time determined by the Engineer;
  - (c) the Contractor has delayed the completion of the Works by the number of days for which the maximum amount of Liquidated Damages can be paid;
  - (d) the Contractor, in the judgment of the Employer, has engaged in corrupt or fraudulent practices, as defined in GCC Clause 3, in competing for or in executing the Contract; and
  - (e) a payment certified by the Engineer is not paid to the Contractor by the Employer within sixty (60) days of the date of the Engineer's certificate.
- 34.3 The Employer and the Contractor may at any time terminate the Contract by giving notice to the other party if either of the parties becomes bankrupt or otherwise insolvent. In such event, termination will be without compensation to any party provided that such termination will not prejudice or affect any right of action or remedy that has accrued or will accrue to the other party.
- 34.4 Notwithstanding the above, the Employer may terminate the Contract for convenience.
- 34.5 If the Contract is terminated, the Contractor is to stop work immediately, make the Site safe and secure and hand over the Site to the Employer as soon as reasonably possible.

35. Payment upon Termination
- 35.1 If the Contract is terminated because of a fundamental breach of Contract by the Contractor, the Engineer shall issue a certificate for the value of the work done and Plant and Materials ordered less advance payments received up to the date of the issue of the certificate and less the percentage to apply to the value of the work not completed, as indicated in the SCC.. Additional Liquidated Damages shall not apply. If the total amount due to the Employer exceeds any payment due to the Contractor, the difference shall be a debt payable to the Employer.
- 35.2 If the Contract is terminated for the Employer's convenience or because of a fundamental breach of Contract by the Employer, the Contractor shall be entitled to payments for completed works and the materials that have been brought to the site for the purpose of the works, but not used as certified by the Engineer after adjusting any payments received by the Contractor.
36. Release from Performance
- 36.1 If the Contract is frustrated by the outbreak of war or by any other event entirely outside the control of either the Employer or the Contractor, the Engineer shall certify that the Contract has been frustrated. The Contractor shall make the Site safe and stop work as quickly as possible, after receiving this certificate. The Contractor shall be paid for all works carried out before stoppage of work and any work carried out afterwards to which a commitment was made.
37. Force Majeure
- 37.1 For the purposes of this Contract, "Force Majeure" means an exceptional event or circumstance:
- (a) which is beyond a Party's control,
  - (b) which such Party could not reasonably have provided against before entering into the Contract,
  - (c) which, having arisen, such Party could not reasonably have avoided or overcome, and
  - (d) which is not substantially attributable to the other Party.
- 37.2 Force Majeure may include, but is not limited to, exceptional events or circumstances of the kind listed below, so long as conditions (a) to (d) above are satisfied:
- (a) war, hostilities (whether war be declared or not), invasion, act of foreign enemies,
  - (b) rebellion, terrorism, sabotage by persons other than the Contractor's Personnel, revolution, insurrection, military or usurped power, or civil war,
  - (c) riot, commotion, disorder, strike or lockout by persons other than the Contractor's Personnel,
  - (d) munitions of war, explosive materials, ionizing radiation or contamination by radio-activity, except as may be attributable to the Contractor's use of such munitions, explosives, radiation or radio-activity, and
  - (e) natural catastrophes such as earthquake, hurricane, typhoon or volcanic activity.
- 37.3 However, force majeure shall not include the following;
- i. rainfall
  - ii. snowfall
  - iii. strikes in other countries
  - iv. non-availability of labourer and materials such as timbers, boulders, sand, and other materials

v. difficulty and risky terrain and remoteness of site.

38. Settlement of Disputes
- 38.1 The Employer and the Contractor shall use their best efforts to settle amicably all disputes arising out of or in connection with this Contract or its interpretation.
- 38.2 Any dispute between the parties to the Contract that may not be settled amicably will be referred to Arbitration at the initiative of either of the parties.
- 38.3 The Arbitration shall be conducted in accordance with the Arbitration Rules of the Kingdom of Bhutan in force.

Section 6. Special Conditions of Contract	
<i>Instructions for completing the Special Conditions of Contract are provided, as needed, in the notes in italics mentioned for the relevant GCC Clauses.</i>	
Clause Ref	Amendments of, and Supplements to, Clauses in the General Conditions of Contract
GCC 1.1(d)	The Contractor is [.....].
GCC 1.1(i)	The Employer is [ <i>Dasho Dungpa, Dungkhag Administration, Gelephu</i> ].
GCC 1.1(j)	The Engineer is [ <i>Kinley Penjor, Assistant Engineer</i> ].
GCC 1.1(k)	The Intended Completion Date for the whole of the Works shall be [ <i>05months</i> ].
GCC 1.1(l)	The Site is located at ( <i>Royal Guest House, Gelephu</i> ).
GCC 1.1(m)	The Works are [ <i>civil plus electrical</i> ]
GCC 2.2(i)	The additional documents forming part of this Contract are: [ <i>"No additional documents".</i> ]
GCC 4.1	The Language governing the Contract shall be [ <i>English.</i> ]

<b>GCC 5.1</b>	The Engineer shall obtain specific approval of the Employer before taking any of the following actions:																		
<b>GCC 7.1</b>	<p>The addresses for Communications shall be:</p> <p><u>For the Employer:</u></p> <p>[Engineer 17478046/77223119]</p> <p><u>For the Contractor:</u></p> <p>[.....].</p>																		
<b>GCC 9.1</b>	The Key Personnel of the Contractor are: [specify only for higher value work]																		
<b>GCC 15.1</b>	For insurance purposes the type of cover required shall be: The contractor shall be responsible for the insurance [as per RICBL Nomes/Financial institute of Bhutan]																		
<b>GCC 16.1</b>	Possession of the site shall be within [10] days from the date of signing of the Contract.																		
<b>GCC 17.1</b>	Commencement of work shall be within [10] days from the date of handing over possession of the Site.																		
<b>GCC 18.1</b>	Completion of works shall be within [ 3 ] months from the date of commencing the works on the site.																		
<b>GCC 19.1 &amp; 19.2</b>	The Contractor shall submit the first work plan [15] days after signing the Contract, and shall update the work plan every [4] weeks during the period of the Contract.																		
<b>GCC 22.1</b>	"The rates for non-scheduled items of works shall be determined by the Engineer".																		
<b>GCC 25.2</b>	An advance payment of [10] % of the Contract Price will be made to the Contractor within (14) days of Contract signing date.																		
<b>GCC 26.1</b>	The Retention shall be [10] % of the Contract Price.																		
<b>GCC 27.1</b>	<p>The liquidated damages for the whole of the Works are [% of final contract price, as per following tabular form] per day. The maximum amount of liquidated damages for the whole of the Works is [10%] of the final Contract Price.</p> <table><tr><td>Sl. No.</td><td>LD applied in %</td><td>No. of days delayed up to</td></tr><tr><td>1</td><td>0.06%</td><td>20 days</td></tr><tr><td>2</td><td>0.07%</td><td>40days</td></tr><tr><td>3</td><td>0.08%</td><td>60 days</td></tr><tr><td>4</td><td>0.09%</td><td>80 Days</td></tr><tr><td>5</td><td>0.10%</td><td>100 days and above</td></tr></table> <p>The imposition of LD shall not be segregated, the next higher percentage shall apply i.e., for 21 days 0.07% would apply, instead of .06% for 20 days and 0.07% for 1 days. However, LD on termination of the works shall be levied on the total quoted amount or the initial contract price.</p>	Sl. No.	LD applied in %	No. of days delayed up to	1	0.06%	20 days	2	0.07%	40days	3	0.08%	60 days	4	0.09%	80 Days	5	0.10%	100 days and above
Sl. No.	LD applied in %	No. of days delayed up to																	
1	0.06%	20 days																	
2	0.07%	40days																	
3	0.08%	60 days																	
4	0.09%	80 Days																	
5	0.10%	100 days and above																	

<b>GCC 31.1</b>	The Defects Liability Period shall be [ 06 ] six months
<b>GCC 35.1</b>	The percentage to apply to the value of the work not completed, representing the Employer's additional cost for completing the Works, is [20% of the value of work not completed up to a maximum of 10% of the initial contract price]

**Notes:**

1. All the works should strictly follow the “Specifications for Buildings & Road Works-2013” of SQCA, MoWHS. All materials used to confirm as per “Bhutan Standard Bureau” BSB, specifications.
2. The bidders are required to acquaint thoroughly with the bidding document.
3. Bidders are encouraged to make prior site visit and acquaint thoroughly the Geo-technical situation, social and cultural features of the construction site in filling the bids
4. Bidders are instructed to fill and submit what has been asked in the bidding documents
5. A list of BSB approved materials are attached herewith, which should form the basis of materials to be used in the construction works and in guiding the bidders in filling the bidding forms appropriately.
6. The entire cement requirement for the works should be procured either from PCAL cement depots (PCAL cement), Lhaki Cement and Dungsam cement (DCCL), from designated sales agents. The original cement invoices of the cement procured should be submitted to the employer periodically. This is in compliance to circular No. MoF/Central Procurement/2014/5502 dated 15<sup>th</sup> January 2014.
7. The entire HDPE pipe for the works like drinking water supply, plumbing, irrigation works should be procured either from BPCL, Bhutan Polythene Company limited(Druk pipes) or BPI, Bhutan Plastic Industry (Rabten). The invoices of the pipe procured should be submitted to the employer periodically. This is in compliance to circular No. FM/DNP/GP-46/2015-16/1263 dated 29<sup>th</sup> April 2016.
8. Don't hesitate to ask/make any queries on these bidding documents, “We strive to serve transparently”.
9. Contractor have to provide a Sign-Board at Work Side reflecting all the information of the project as part of the Project.
  - a. Name of the contractor/ construction firm.
  - b. Name of Procuring Agency.
  - c. Site Engineer/project engineer.
  - d. Contract duration.

This is compliance with notification no. MoWHS/CDB-03/2013-2014/601 dated 17<sup>th</sup> April 2014

10. Abnormally Low Bid: PRR 2009, clause 5.4.5, additional differential security should be in form of “Cash Warrant” not in the form of “Bank Guarantee”. Please refer the notification no. MoWHS/ Sec- 30/2016-17/657 dated 31/08/2016 which is self- explicit.



## Section 7 – Contract Forms

This section contains forms which, once completed, will form part of the Contract. The forms for Performance Security and Advance Payment Security, when required, shall only be completed by the successful Bidder after Contract award.

### Contract Forms

Form	Title
Form -1	Notification of Award
Form -2	Contract Agreement
Form -3	Bank Guarantee for Performance Security
Form -4	Bank Guarantee for Advance Payment



## Notification of Award

Contract No:

Date:

To:

[name and address of Contractor]

This is to notify you that your Bid dated [insert date] for the execution of the Works for [name of project / Contract] for the Contract Price of Nu [amount in figures and in words], as corrected and modified in accordance with the Instructions to bidder is hereby accepted by [name of the Employer].

You are requested to proceed with the execution of the Works on the basis that this Notification of Award shall constitute the formation of a Contract, which shall become binding upon you furnishing a Performance Security within fourteen (14) days, in accordance with ITB Clause 32, and the signing the Contract Agreement within twenty-one (21) days, in accordance with ITB Clause 33.

We attach the Contract Agreement and Special Conditions of Contract for your perusal and signature.

དཔལ་ལྷན་འབྲུག་གཞི་

Signed

ཚེང་ཁག་བདེ་མོ་

Duly authorised to sign for and on behalf of  
[name of Procuring Entity]

Date:



## Contract Agreement

THIS AGREEMENT, made the [day] of [month] [year] between [name and address of Employer] (hereinafter called "the Employer") of the one part and [name and address of Contractor] (hereinafter called "the Contractor") of the other part.

WHEREAS, the Employer invited Tenders for certain Works, viz, [brief description of the Works] and has accepted a Tender by the Contractor for the execution of those works in the sum of Ngultrum [insert amount in figures and words], hereinafter called "the Contract Price.

NOW THIS AGREEMENT WITNESSETH as follows:

1. In this Agreement, words and expressions shall have the same meanings as are respectively assigned to them in the General Conditions of Contract hereinafter referred to.
2. The documents forming the Contract shall be interpreted in the following order of priority:
  - (a) The signed Contract Agreement;
  - (b) The letter of Acceptance;
  - (c) The completed Bid form as submitted by the Bidder;
  - (d) The Special Conditions of Contract;
  - (e) The General Conditions of Contract;
  - (f) Specifications
  - (g) The Drawings; and
  - (h) Any other document listed in the SCC as forming part of the Contract..
3. In consideration of the payments to be made by the Employer to the Contractor as hereinafter mentioned, the Contractor hereby covenants with the Employer to execute and complete the Works and to remedy any defects therein in conformity in all respects with the provisions of the Contract.
4. The Employer hereby covenants to pay the Contractor in consideration of the execution and completion of the Works and the remedying of defects therein, the Contract Price or such other sum as may become payable under the provisions of the Contract at the times and in the manner prescribed by the Contract.

**IN WITNESS** whereof the Parties thereto have caused this Agreement to be executed in accordance with the laws of Bhutan on the day month and year first before written.

For the Employer

For the Contractor

Signature

Print Name

Title

In the presence of  
(Name)

Address

## Bank Guarantee for Performance Security

*[this is the format for the Performance Security to be issued by any financial institute in Bhutan in accordance with ITB Clause 35]*

Contract No:

Date:

To:

[Name and address of Employer]

### PERFORMANCE GUARANTEE No:

We have been informed that *[name of Contractor]* (hereinafter called "the Contractor") has undertaken, pursuant to Contract No *[reference number of Contract]* dated *[date of Contract]* (hereinafter called "the Contract"), the execution of works *[description of works]* under the Contract.

Furthermore, we understand that, according to your conditions, Contracts must be supported by a performance guarantee.

At the request of the Contractor, we *[name of bank]* hereby irrevocably undertake to pay you, without cavil or argument, any sum or sums not exceeding in total an amount of Nu *[insert amount in figures and in words]* upon receipt by us of your first written demand accompanied by a written statement that the Contractor is in breach of its obligation(s) under the Contract conditions, without you needing to prove or show grounds or reasons for your demand of the sum specified therein.

This guarantee is valid until *[date of validity of guarantee]*, consequently, we must receive at the above-mentioned office any demand for payment under this guarantee on or before that date.

Signature

Signature

## Bank Guarantee for mobilisation advance

*[this is the format for the Advance Payment Guarantee to be issued by a financial institutions in Bhutan in their letter pad in accordance with SCC Clause 25.2]*

Contract No:

Date:

To:

[Name and address of Employer]

### ADVANCE PAYMENT GUARANTEE No:

We have been informed that *[name of Contractor]* (hereinafter called "the Contractor") has undertaken, pursuant to Contract No *[reference number of Contract]* dated *[date of Contract]* (hereinafter called "the Contract"), the execution of works *[description of works]* under the Contract.

Furthermore, we understand that, according to your conditions, Advance Payments must be supported by a bank guarantee.

At the request of the Contractor, we *[name of bank]* hereby irrevocably undertake to pay you, without cavil or argument, any sum or sums not exceeding in total an amount of Nu. *[insert amount in figures and in words]* upon receipt by us of your first written demand accompanied by a written statement that the Contractor is in breach of its obligation(s) under the Contract conditions, without you needing to prove or show grounds or reasons for your demand of the sum specified therein.

We further agree that no change, addition or other modification of the terms of the Contract to be performed, or of any of the Contract documents which may be made between the Employer and the Contractor, shall in any way release us from any liability under this guarantee, and we hereby waive notice of any such change, addition or modification.

This guarantee is valid until *[date of validity of guarantee]*, consequently, we must receive at the above-mentioned office any demand for payment under this guarantee on or before that date.

Signature

Signature

**APPROVED BRAND LIST AS OF 1<sup>ST</sup> MARCH 2017**

Sl/No.	PRODUCT CATEGORY MANDATORY(M)	Brand
1	SWITCHES, SOCKETS & WIRING ACCESSORIES(M)	Havells
		Polycab
		CurveNixon
		Essenza
		HPL
		Roopa
		Tinsel
		Newlike
2	DOMESTIC WIRES & CABLES(M)	Mescab
		Richa
		V-Guard
		Rhino
		Havells
		Polycab
		GeeCab
		ATC
		Goldmedal
		KEI
		RoyalCables

	DOMESTIC WIRES & CABLES(M)		HPL
			Roopa
			Homeflex
			Pointer
			Finolex
			System
3	LV SWITCHGEARS (M)	MCB	Geco
			Benlo
			HPL
		RCCB/ELCB/RCBO	Benlo
			HPL
			Havells
			Geco
		DISTRIBUTION BOARD	Benlo
			HPL
			Geco
		MCCB	Benlo
			HPL
		ISOLATORS	Geco

4	ELECTRIC STORAGE & INSTANT WATER HEATERS (M)	GYSERS	Racold
			V-Guard
		STORAGETYPE WATER HEATER	Berlia
			System
			Lazer
		INSTANTSTORAGE	Venus
5	LT POWER CABLES & LV POWER CABLES (M)		Mescab
			V-Guard
			KEI
			Polycab
			Rhino
			HPL
6	HV&HTPOWERCABLES (M)		Polycab
			Rhino
7	AC static watt-hour meters class I&II(M)		Benlo
8	Main Switch,Changeover switch, on-loadchangeover switch, BusBAR, Motor starter, SFU, HRC		Benlo
			HPL

9	LAMPS(V)	COMPACT FLUORESCENT LAMP	Havells
			HPL
		INCANDESCENT/GLS LAMP	Havells
10	LED		HPL
		3W,5W,7W&9W	Roopa
		LED STREET LUMINARIES&LED FLOODLIGHT LUMINARIES	Roopa
			Polycab
11	LUMINARIES/FIXTURES (V)		Havells
12	FANS(V)	CEILING FAN	Havells
			Berlia
			V-GUARD
			HAVELLS
		TABLE FAN AND EXHAUST FAN	LAZER
			Polycab
13	CONDUITS	PVC CONDUIT & FITTINGS(V)	Polycab
14	OVER HEAD CONDUCTOR (M)		Rhino

\*ABOVE BRANDS ARE AS PER THE BRANDS APPROVED BY BSB.

**Certified/approved civil products as on 30th March 2017**

Sl.no	Product Category	Product Brand	Certification (mandatory /Voluntary)	Manufacturuer	Factory location	Certificate validity
1	<b>High Density Polyethylene pipes (HDPE) and fittings</b>	Druk Pipe	Mandatory	Bhutan Polythene Compnay Limited	Phuntsholing	November 22, 2018
2		Supreme		Supreme Industries Limited	Mumbai, Maharashtra	May 26, 2018
3		Duraline		Duraline India Private Limited	New Delhi	February 2, 2018
4		Ajaplas		Shree Narayani Pipe Manufacturing Company	Kolkata	February 2, 2018
5		Rabten		Bhutan Plastic Industry	Phuntsholing	September 3, 2017
6		Umex		Umex Polymers Private Limited	Kolkata	February 12, 2019
7		Ori-Plast		Ori-Plast Limited	Kolkata	December 3, 2017
8	<b>Chlorinated Polyvinyl Chloride(CPVC) Pipes and Fittings</b>	Astral Flowguard	Mandatory	Astral Polytechnil Limited	Ahmedabad	May 26, 2018
9		Raksha		Desana Polyplastics Indsutries	New Delhi	May 26, 2018
10		Skipper Pipe		Skipper Limited	Kolkata	February 12, 2019
11		Ashirvad		Ashirvad Pipes Private Limited	Bangalore	December 3, 2017
12	<b>Un-Plasticized Polyvinyl Chloride (UPVC) pipes and Fittings for potable water</b>	Supreme	Mandatory	The Supreme Industries Limited	Kolkata	February 12, 2019
13		Skipper Pipe		Skipper Limited	Kolkata	November 22, 2018
14		Ori-Plast		Ori-Plast Limited	Kolkata	Decmber 3, 2017
15	<b>Un-Plasticized Polyvinyl Chloride (UPVC) pipes and Fittings for Sewerage and</b>	Astral Ultra drain		Astral Polytechnil Limited	Ahmedabad	May 26, 2018
16		SFMC		Sarovaram Indsutries LLP	New Delhi	December 3, 2017
17		Skipper pipes		Skipper Limited	Kolkata	November 22, 2018



Sl.no	Product Category	Product Brand	Certification (mandatory /Voluntary)	Manufacturer	Factory location	Certificate validity
18	rain water	Ashirvad		Ashirvad Pipes Private Limited	Bangalore	December 3, 2017
19	PolyPropylene Random Co-Polymers for potable water	SFMC	Mandatory	Savior Fair Manufacturing Company	New Delhi	December 3, 2017
20	Ductile Iron Pipes and Fittings	Electrosteel	Mandatory	Electrosteel Castings Limited	Kolkata	January 24, 2019
21		Rashmi		Rashmi Metaliks Limited	Kolkata	May 26, 2018
22	Galvanized iron (G.I) Pipes	Nezone	Mandatory	Nezone Pipes and Structures	Guwahati	December 3, 2017
23	Galvanized iron (G.I) Pipe Fittings	NVR	Voluntary	AVN Manufacturing Company	Jalandhar	August 30, 2018
24		ARE & ZZ		Zento Industries	Jalandhar	December 3, 2017
25		KOHLI		R.S.V Industries (India)	Jalandhar	August 30, 2018
26	Rectangular and square hollow steel sections	Nezone	Mandatory	Nezone Pipes and Structures	Guwahati	December 3, 2017
27	Medium and high tensile Structural Steel (M.S flat, square bar and steel channel section)	SRMB		SRMB Srijan Private Limited	Durgapur	February 12, 2019
28	Gun Metal and Brass Valves and cocks	Zoloto	Voluntary	Zoloto Industries	Jalandhar	September 3, 2017
29		MALA		Mala Metals	Jalandhar	September 3, 2017
30		PIC		Pawan Industrial Corporation	Jalandhar	August 30, 2018
31		New & Z		New Metal Works	Jalandhar	September 3, 2017
32	C.P Bathroom Fittings	Jal	Voluntary	Aqua Systems Private Limited	Mohali, Punjab	August 30, 2018
33		Agmeco		Agmeco Faucets Private Limited	Uttarakhand	August 30, 2018
34		Coats		H.J Industries	New Delhi	July 23, 2017
35		KOHLI-G		A.B Metal Industries	Jalandhar	August 30, 2018

Sl.no	Product Category	Product Brand	Certification (mandatory /Voluntary)	Manufacturuer	Factory location	Certificate validity
36		Royal		Royal Field & Compnay	New Delhi	July 23, 2017
37	Water Storage tanks	Rabten	Mandatory	Bhutan Plastic Industry	Phuntsholing	September 3, 2017
38		Supreme Siltank		The Supreme Industries Limited	Kolkata	February 12, 2019
39	High Strength deformed bars for concrete reinforcement (TMT) Fe500	Perfect Thermex TMT	Mandatory	Bhutan Rolling Mills Limited	Phuntsholing	December 3, 2017
40		SRMB		SRMB Srijan Private Limited	Durgapur	February 12, 2019
41		Bengal Marathon TMT		Fabulous Commercial Private Limited	Darjeeling	August 30, 2018
42		Perfect Thermex TMT		Lhaki Steels and Rolling Private Limited	Phuntsholing	December 3, 2017
43	Roofing Sheets(CGI and Prepainted)	Aarti Suraksha	Mandatory	Bhushan Power and steel Limited	Kolkata	January 24, 2019
44		Galvacolour		Bhushan Power and steel Limited	Kolkata	December 3, 2017
45		CRIL		Colour Roof India Limited	Mumbai	August 30, 2018
46		Durakolor		Exodus Ispat Private Limited	kolkata	May 26, 2018
47		Everest		Everest Industries Limited	Roorkie	February 12, 2019
48	Floor and Wall Tiles	Cengres tiles		Cengres Tiles Private Limited	Gujarat	August 30, 2018
49		Sonex gold, Sonex Plus		Sonex Industries Private Limited	Ahmedabad	July 23, 2017
50	Integral Water proofing compound for cement mortar, concrete and concrete admixtures	HIND PLAST SUPER ,HIND PLAST IWA, HIND PROOF NO.1	Voluntary	Hindcon Chemicals Limited	Kolkata	September 3, 2017
51		1.TERRAMESH 2. GREEN TERRAMESH 3. GABION & GABION MATTERESS (Both Zn coated and Zn+PVC coated)		Maccaferri Environmental Solutions Private Limited	Pune	January 24, 2019

Sl.no	Product Category	Product Brand	Certification (mandatory /Voluntary)	Manufacturuer	Factory location	Certificate validity
52	<b>Gabion Mesh</b>	GTI (Both Zn coated and Zn+PVC coated)	Voluntary	Gabion Technologies India Private Limited	New Delhi	November 22, 2018
53		Adjust Wire (Both Zn coated and Zn+PVC coated)		Adjust Wire Products	Gujarat	August 30, 2018
54		Thangtong (only Zn coated) M.S wire brand- Nirmal		Thabgtong Iron and Steel Products	Phuntsholing	November 22, 2018
55		DRUK WIRE (only Zn coated) M.S wire brand- Nirmal		Druk Wire and Steel Works	Sarpang ,Bhutan	February 2, 2018
56	<b>Chian link Fence, Razor coil and Barbed wire</b>	Gurukrupa (Chain Link Fence and Razor coil)	Voluntary	Gurukrupa Wire Netting Industries	Gujarat	August 30, 2018
57		Thangtong (Chain link fence and barbed wire) M.S wire brand- Nirmal		Thangtong iron and Steel Products	Phuntsholing	November 22, 2018
58	<b>High Strength Geo-synthetics for Soil Reinforcement</b>	PARALINK PARAWEB	Voluntary	Maccaferri Environmental Solutions Private Limited	Pune	January 24, 2019
59	<b>Wire Rope Road Safety Barriers</b>	BRIFEN	Voluntary	Hill and Smith Infrastructure Products India Private limited	Haryana	August 30, 2018
60	<b>Woven/non woven Geo-Textiles, Geotubes and Geo Synthetic reinforced Wall</b>	GEOFIL, FLEXITUFF and GRW	Voluntary	Flexituff International Limited	New Delhi	February 2, 2018
61	<b>Liquefied Petroleum Gas (LPG) Hose</b>	Super Seal	Voluntary	Super Seal Flexible Hose Limited	New Delhi	July 23, 2017
62	<b>Water meters</b>	Baylan	Voluntary	Baylan Water Meters		September 3, 2017
63	<b>UPVC Profiles (Doors and Windows)</b>	LESSO	Voluntary	Norlha Enterprise	Thimphu	February 2, 2018

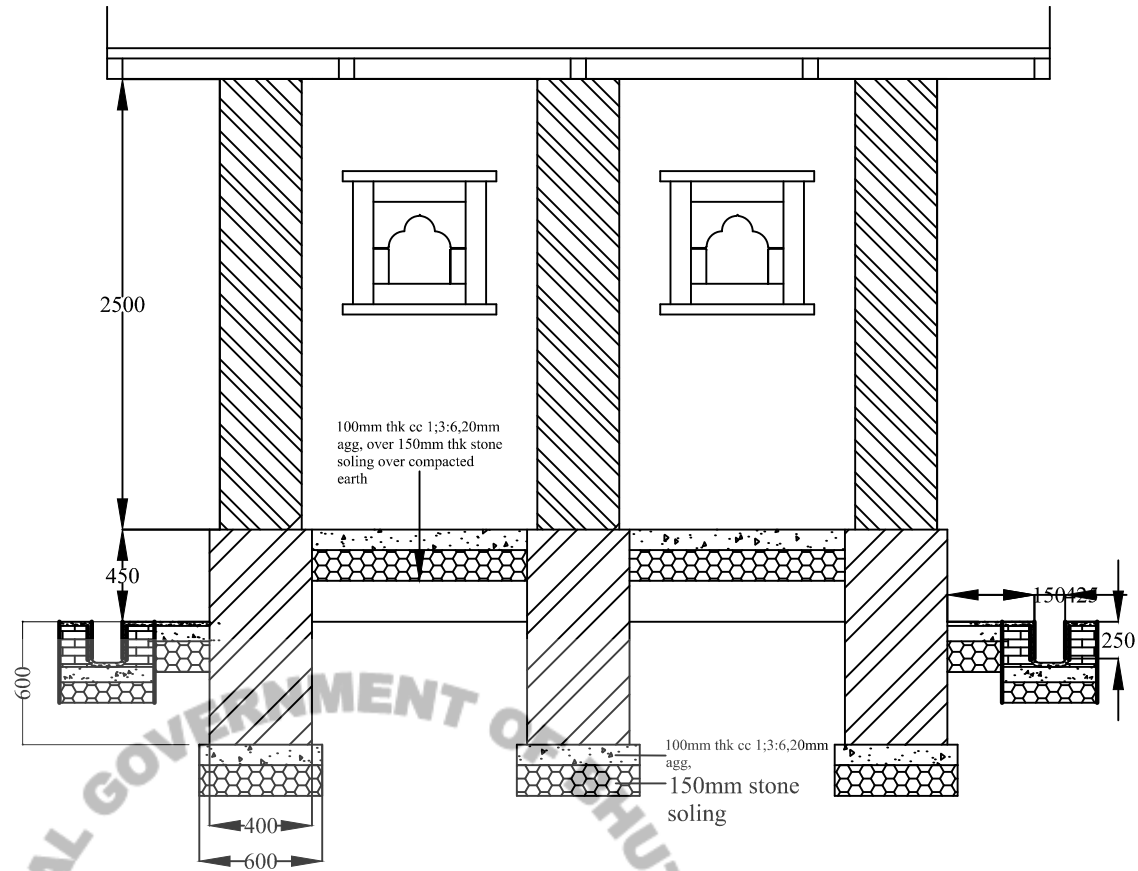
Sl.no	Product Category	Product Brand	Certification (mandatory /Voluntary)	Manufacturuer	Factory location	Certificate validity
64	<b>Cationic Bitumen Emulsion</b>	BhuBit	Mandatory	Bhutan Bitumen	Phuntsholing	September 21, 2018
65		Emulsion (Cationic Type)		Druk Emulsion Pvt. Ltd.	Gomtu	February 24, 2018
66		Bitchem		Bitchem Asphalt Technology Ltd.	Guwahati	May 26, 2018
67		GRIL		G R Infraproject	Guwahati	December 3, 2017
68	<b>CEMENT OPC 43</b>	Lhaki Super	Mandatory	Lhaki Cement Pvt. Ltd	Gomtu	September 3, 2017
69		Druk Cement		Druk Cement Pvt. Ltd.	Phuntsholing	September 21, 2018
70	<b>CEMENT PSC</b>	Lhaki Top	Mandatory	Lhaki Cement Pvt. Ltd	Gomtu	September 3, 2017
71	<b>Pre-stressed, Pre-Cast Concrete Products</b>	Quality Products	Mandatory	Quality Products	Guwahati	July 23, 2017
72	<b>Interlocking Cement Earth Blocks</b>	E3	Mandatory	Druk Soednam Enterprise	Bjemina	February 24, 2018
73	<b>Concrete Bricks (Solid)</b>	BCB	Mandatory	Bhutan Concrete Bricks (Bjemina)	Bjemina	July 7, 2018
74		YBM		YBM Concrete Products	Wangdue Phodrang	May 26, 2018
75		Drukyul		Drukyul Hollow Blocks	Sarpang	December 3, 2017
76		LCCP		Lhadon Concrete Construction Products	Samdrup Jongkhar	July 23, 2017

Sl.no	Product Category	Product Brand	Certification (mandatory /Voluntary)	Manufacturuer	Factory location	Certificate validity
77		DMT	Mandatory	DMT Bricks	Wangdue Phodrang	December 3, 2017
78		TBS		Tshunta Bricks	Bangtar	October 1, 2017
79		Sonam Bricks		Sonam Bricks Manufacturing	Samdrup Jongkhar	May 26, 2018
80		Yanjung Sonam Bricks & Steel Fabrication		Yanjung Sonam Bricks & Steel Fabrication	Gelephug	September 1, 2018
81		Bhutan Concrete Bricks		Bhutan Concrete Bricks (Phuentsholing)	Phuntsholing	May 26, 2018
82	Autoclaved Areated Concrete Blocks (AAC)	BRIKOLITE	Mandatory	K.D. Infra	Guwahati	February 24, 2018
83	Precast Concrete Paver Blocks	Lovely	Voluntary	Harsaru Industries	Kolkata	May 26, 2018
84		YBM Concrete Products		YBM Concrete Products	Wangdue Phodrang	May 26, 2018
85	Precast Concrete Chequered Tiles/Mosaic/Terazzo Tiles	Lovely	Voluntary	Harsaru Industries	kolkata	May 26, 2018
86	Plaster of Paris (POP)	Druk Plaster	Voluntary	Druk Plaster & Chemical Ltd.	Pema Gatshel	February 24, 2018

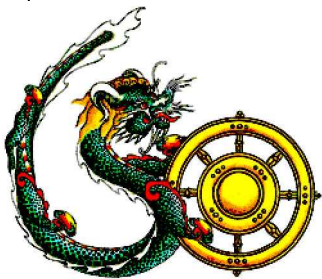
**Note-** 1. Kindly check the certificate validity before procurement of above products.

2. Certificates are valid for 2 years from the date of approval.

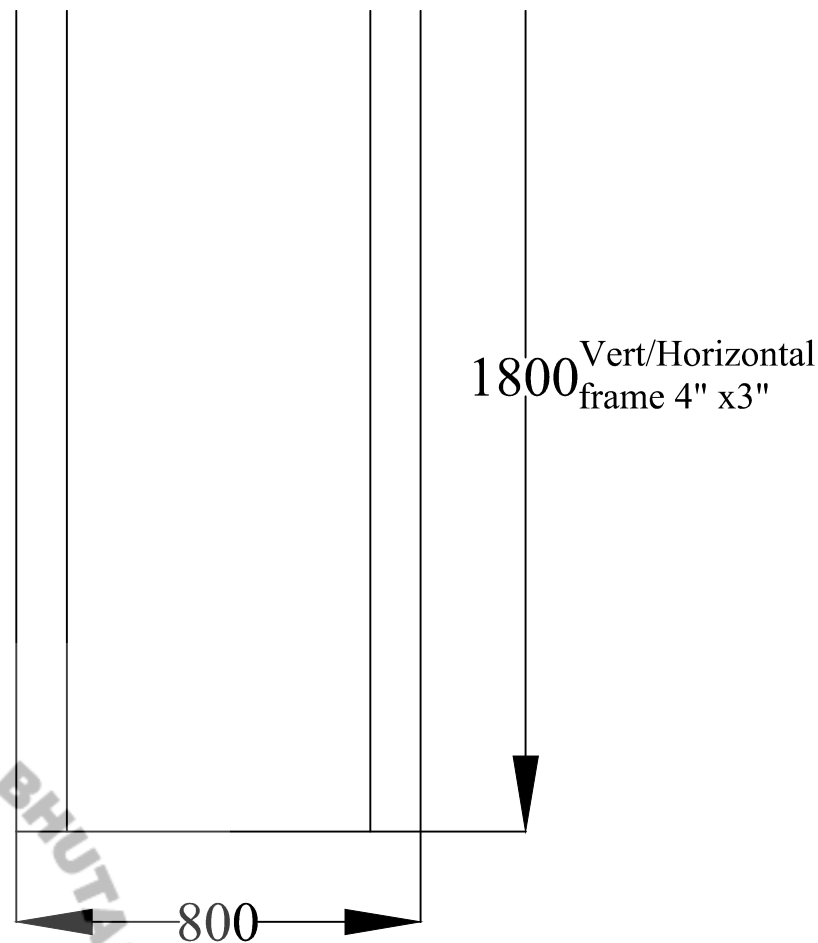
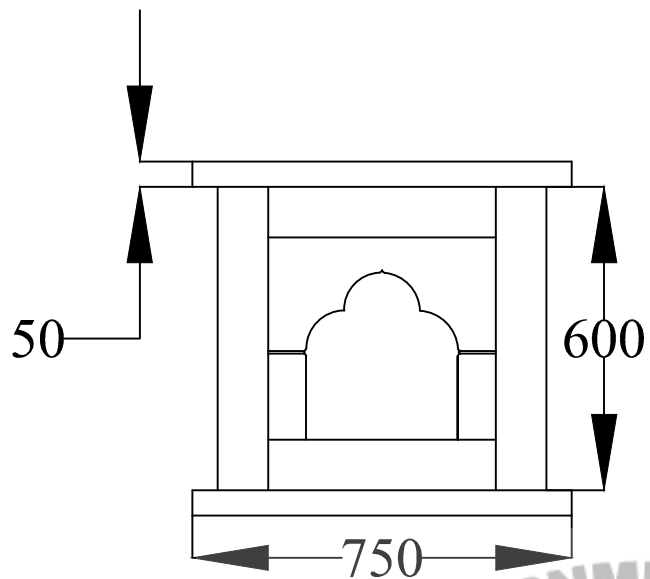
3. This list will be updated periodically.



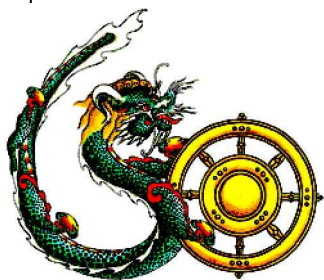
ROYAL GOVERNMENT OF BHUTAN  
 དབལ་ཕྱན་འབྲུག་གཞུང་།



ENGINEERING SECTOR, SAMTENLING GEWOG ADMINISTRATION				DRAWING NO:-.....
DRAWING DETAILS	DESIGNED/DRAWN	CHECKED	APPROVED	SCALE:- NTS
CONSTRUCTION OF KITCHEN CUM TWO UNIT PF TOILET AT DRUNGKHAG GUEST HOUSE(TOILET SECTION)	KINLEY PENJOR ASST.ENGINEER			UNIT:- MM



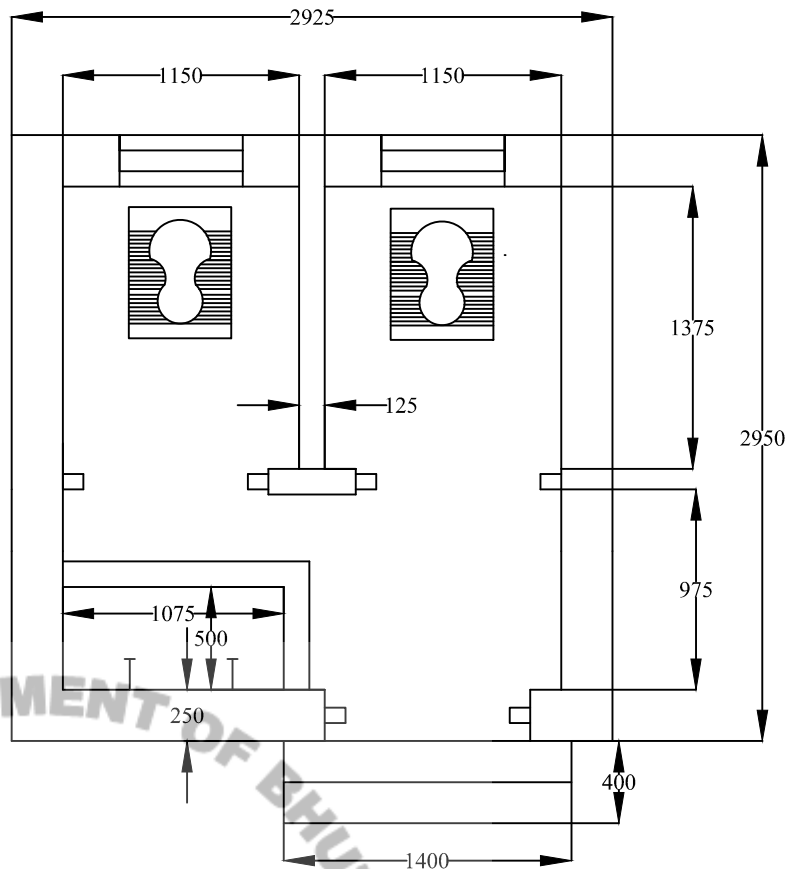
ROYAL GOVERNMENT OF BHUTAN  
 དབལ་ཕྱན་འབྲུག་གཞུང་།



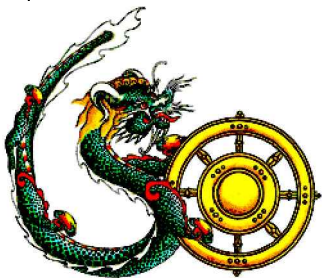
## ENGINEERING SECTOR, SAMTENLING GEWOG ADMINISTRATION

DRAWING NO:-.....

DRAWING DETAILS	DESIGNED/DRAWN	CHECKED	APPROVED	SCALE:- NTS
CONSTRUCTION OF KITCHEN CUM TWO UNIT PF TOILET AT DRUNGKHAG GUEST HOUSE(TOILET SECTION)	KINLEY PENJOR ASST.ENGINEER			UNIT:- MM



ROYAL GOVERNMENT OF BHUTAN  
 དབལ་ཕྱན་འབྲུག་གཞུང་།

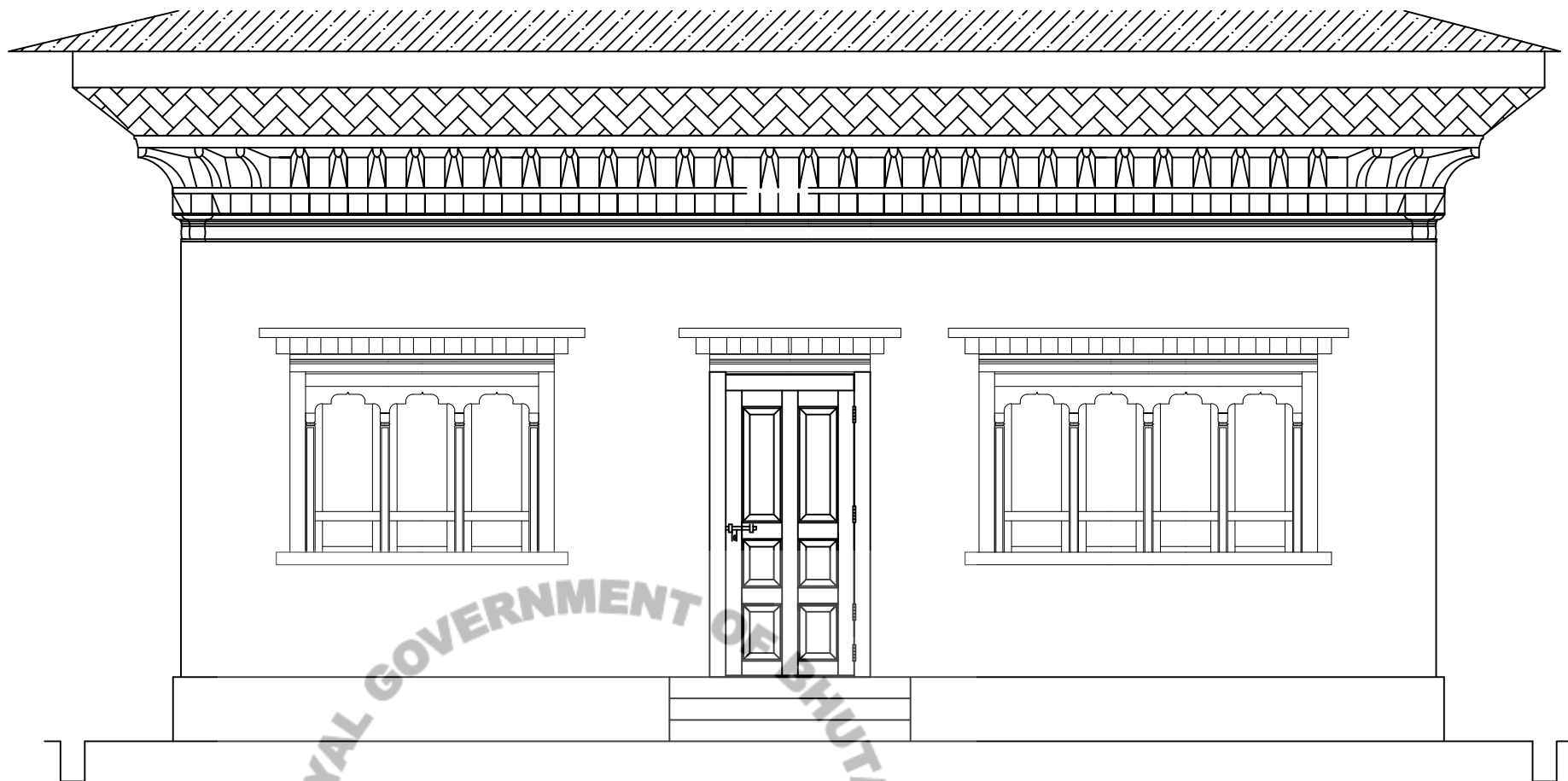


## ENGINEERING SECTOR, SAMTENLING GEWOG ADMINISTRATION

DRAWING NO:-.....

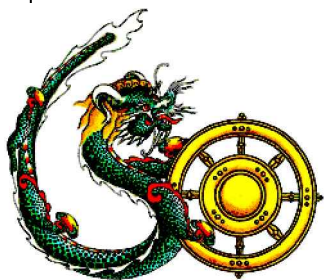
DRAWING DETAILS	DESIGNED/DRAWN	CHECKED	APPROVED	SCALE:- NTS
CONSTRUCTION OF KITCHEN CUM TWO UNIT PF TOILET AT DRUNGKHAG GUEST HOUSE (TOILET PLAN)	KINLEY PENJOR ASST. ENGINEER			UNIT:- MM





དཔལ་ལྷན་འབྲུག་གཞུང་།

ROYAL GOVERNMENT OF BHUTAN

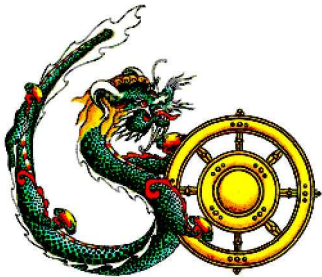
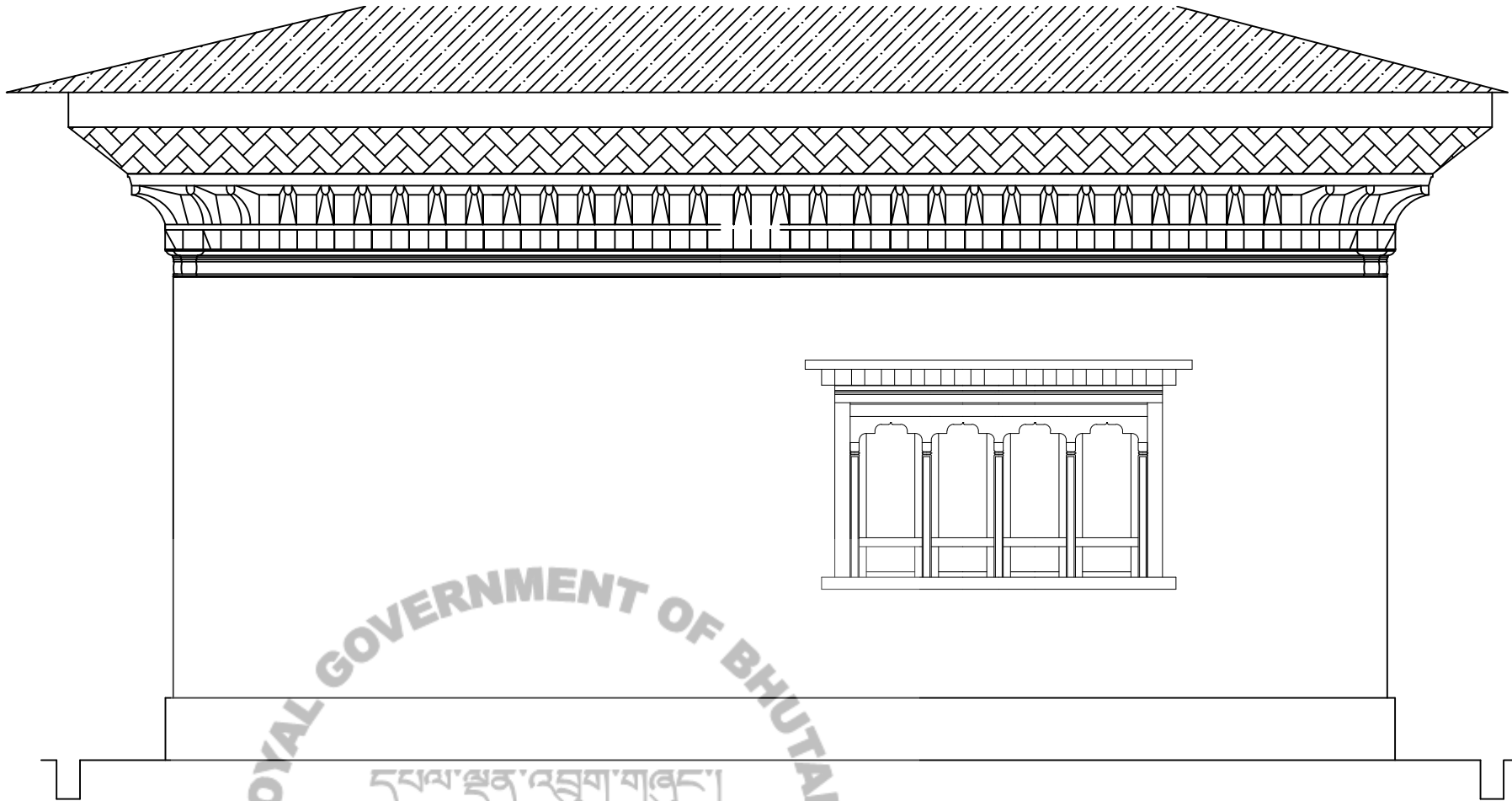


## ENGINEERING SECTOR, SAMTENLING GEWOG ADMINISTRATION

DRAWING NO:-.....

DRAWING DETAILS	DESIGNED/DRAWN	CHECKED	APPROVED	SCALE:- NTS
CONSTRUCTION OF KITCHEN CUM TWO UNIT PF TOILET AT DRUNGKHAG GUEST HOUSE(FRONT ELEVATION)	KINLEY PENJOR ASST.ENGINEER			UNIT:- MM

ROYAL GOVERNMENT OF BHUTAN

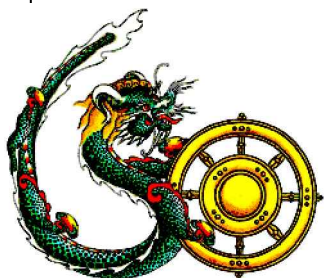
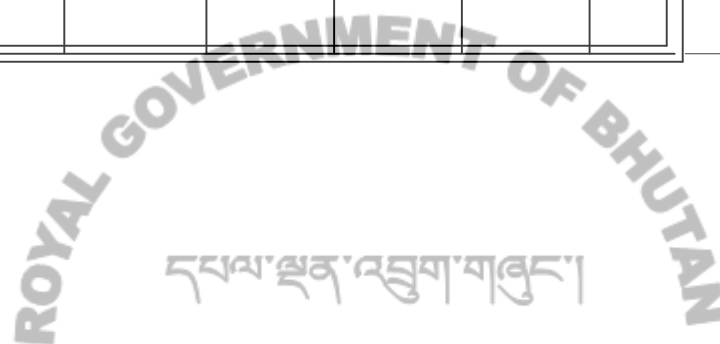
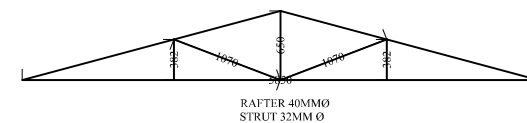
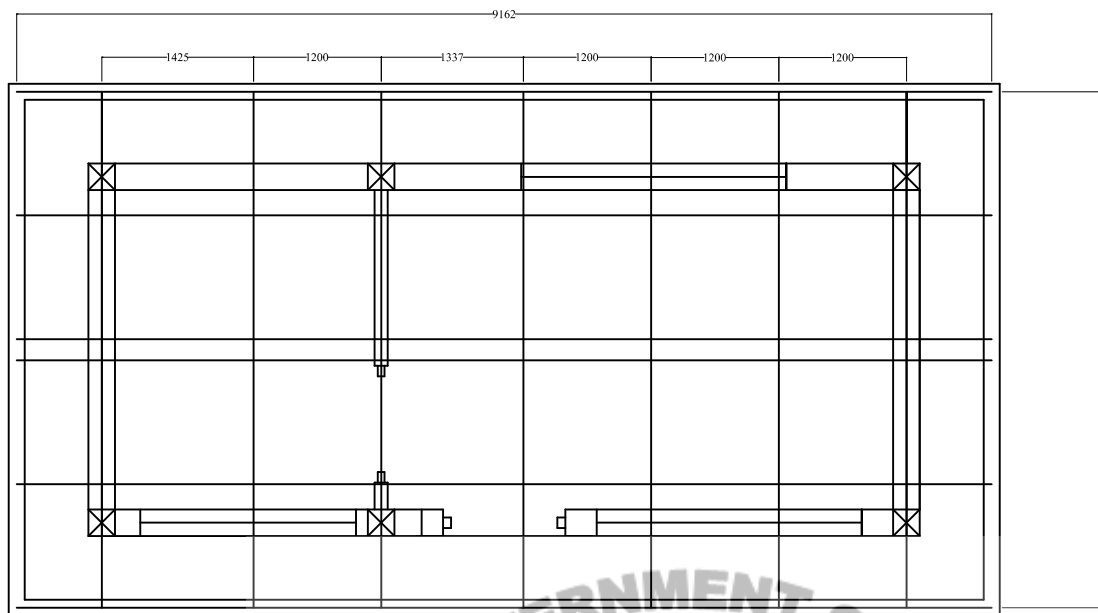


## ENGINEERING SECTOR, SAMTENLING GEWOG ADMINISTRATION

DRAWING NO:-.....

DRAWING DETAILS	DESIGNED/DRAWN	CHECKED	APPROVED	SCALE:- NTS
CONSTRUCTION OF KITCHEN CUM TWO UNIT PF TOILET AT DRUNGKHAG GUEST HOUSE(BACK ELEVATION)	KINLEY PENJOR ASST.ENGINEER			UNIT:- MM

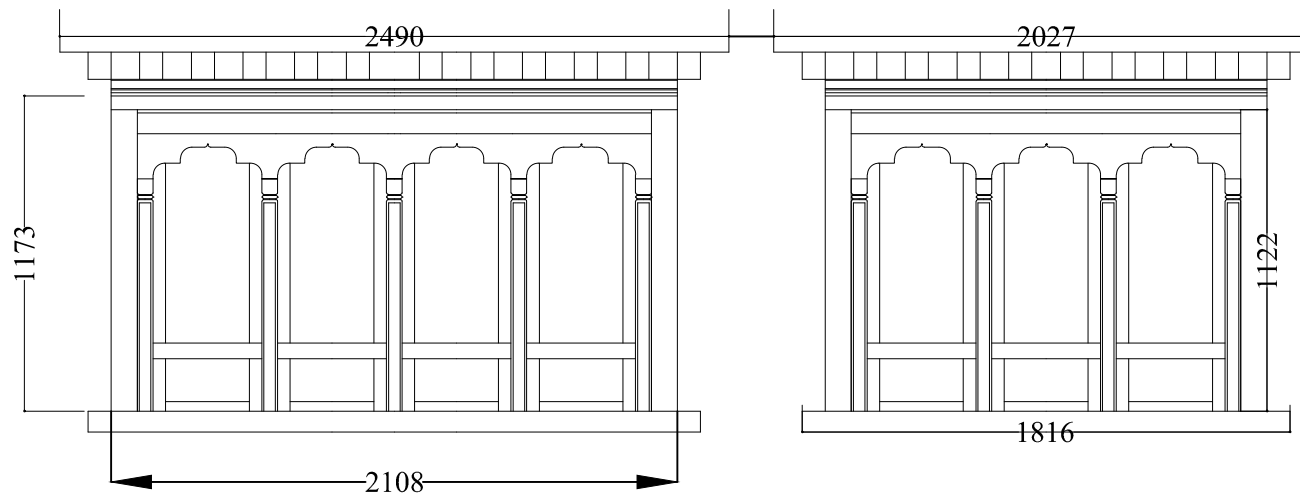




# ENGINEERING SECTOR,SAMTENLING GEWOG ADMINISTRATION

DRAWING NO:-.....

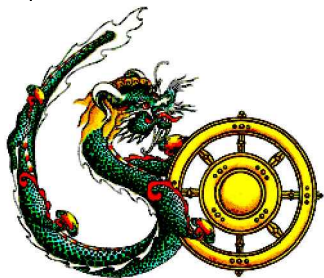
DRAWING DETAILS	DESIGNED/DRAWN	CHECKED	APPROVED	SCALE:- NTS
CONSTRUCTION OF KITCHEN CUM TWO UNIT PF TOILET AT DRUNGKHAG GUEST HOUSE(ROOFING DETAILS)	KINLEY PENJOR ASST.ENGINEER			UNIT:- MM



W4

W3

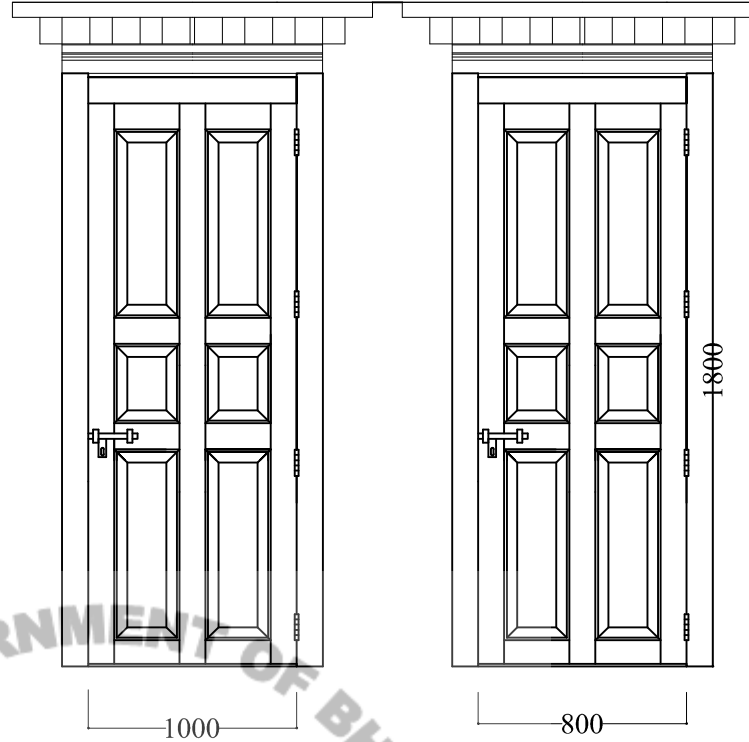
ROYAL GOVERNMENT OF BHUTAN  
 དཔལ་ལྷན་འབྲུག་གཞུང་།



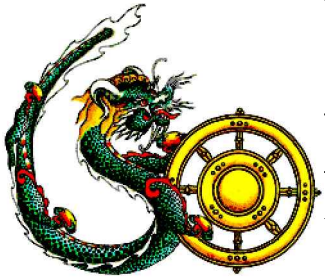
## ENGINEERING SECTOR, SAMTENLING GEWOG ADMINISTRATION

DRAWING NO:-.....

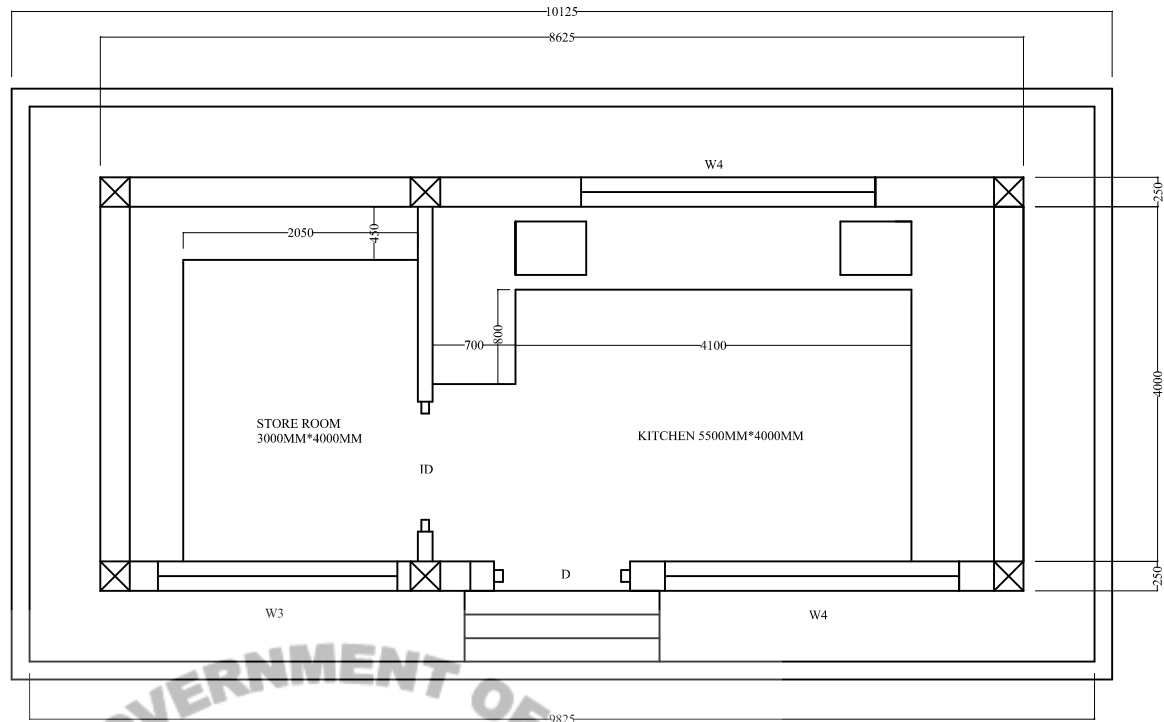
DRAWING DETAILS	DESIGNED/DRAWN	CHECKED	APPROVED	SCALE:- NTS
CONSTRUCTION OF KITCHEN CUM TWO UNIT PF TOILET AT DRUNGKHAG GUEST HOUSE(WINDOW DETAILS)	KINLEY PENJOR ASST.ENGINEER			UNIT:- MM



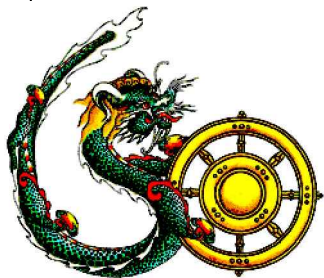
ROYAL GOVERNMENT OF BHUTAN  
 དཔལ་ལྷན་འབྲུག་གཞུང་།



ENGINEERING SECTOR, SAMTENLING GEWOG ADMINISTRATION				DRAWING NO:-.....
DRAWING DETAILS	DESIGNED/DRAWN	CHECKED	APPROVED	SCALE:- NTS
CONSTRUCTION OF KITCHEN CUM TWO UNIT PF TOILET AT DRUNGKHAG GUEST HOUSE(DOOR DETAILS)	KINLEY PENJOR ASST.ENGINEER			UNIT:- MM



ROYAL GOVERNMENT OF BHUTAN  
 དབལ་ལྗོངས་འབྲུག་གཞུང་།



## ENGINEERING SECTOR, SAMTENLING GEWOG ADMINISTRATION

DRAWING NO:-.....

DRAWING DETAILS	DESIGNED/DRAWN	CHECKED	APPROVED	SCALE:- NTS
CONSTRUCTION OF KITCHEN CUM TWO UNIT PF TOILET AT DRUNGKHAG GUEST HOUSE(PLAN)	KINLEY PENJOR ASST.ENGINEER			UNIT:- MM

NAME OF THE WORK : CONSTRUCTION OF KITCHEN CUM STORE AND TWO  
UNIT PF TOILET

LOCATION : ROYAL GUEST HOUSE, GELEPHU

**BILL OF QUANTITIES**

SL.#	DESCRIPTION	QTY	UNIT	RATE	AMOUNT
	<b>KITCHEN CUM STORE</b>				
1.00	Earth work in excavation over areas, depth >300mm, width >1.5m, area >10 Sq.m on plan, including disposal of excavated earth within 50m lead and 1.5m lift & disposed soil to be neatly dressed	15.95	cu.m		
2.00	Excavation in foundation trenches or drains not exceeding 1.5m in width or area 10 sq.m on plan, including dressing & ramming, disposal of surplus soil within 50m lead & 1.5m lift	33.72	cu.m		
3.00	Providing and laying Hand packed stone filling or soling with stones	4.86	cu.m		
4.00	Providing and laying in position plain cement concrete excluding the cost of centering and shuttering - All work upto plinth level.1:3:6 (1 cement : 3 sand : 6 graded crushed rock 40 mm nominal size)	3.03	cu.m		
5.00	Providing & laying Random Rubble Masonry with hard stone in foundation & plinth In cement mortar 1:4	17.80	cu.m		
6	Providing & laying concrete block brick in Foundation & Plinth up to floor two level In cement mortar 1:4	9.27	cu.m		
7.00	Providing & laying in position reinforced cement concrete excluding the cost of centering, shuttering and reinforcement - all work upto plinth level 1:2:4 (1 cement : 2 sand : 4 graded crushed rock 20 mm nominal size)	0.32	cu.m		



NAME OF THE WORK : CONSTRUCTION OF KITCHEN CUM STORE AND TWO  
UNIT PF TOILET

LOCATION : ROYAL GUEST HOUSE, GELEPHU

**BILL OF QUANTITIES**

SL.#	DESCRIPTION	QTY	UNIT	RATE	AMOUNT
8.00	Providing & laying in position reinforced cement concrete work in plinth and skirting courses, fillets, columns , pillars, posts and struts upto floor five level excluding the cost of centering, shuttering and reinforcement.1:2:4 (1 cement : 2 sand : 4 graded crushed rock 20 mm nominal size)	1.35	cu.m		
9.00	Providing & laying in position reinforced cement concrete work in beams, lintels, bands, plain window sills, staircases, spiral staircases upto floor five level excluding the cost of centering, shuttering and reinforcement 1:2:4 (1 cement : 2 sand : 4 graded crushed rock 20 mm nominal size)	4.79	cu.m		
9.10	Providing & fixing Thermo-Mechanically Treated reinforcement bar (Yield Strength 500 MPa) for R.C.C work including cutting, bending, binding and placing in position complete	811.56	kg		
10.00	Providing & fixing centering and shuttering (formwork), including strutting, propping etc. and removal of formwork Foundation and plinth etc.				
A	Foundation and plinth etc.	12.89	sq.m		
B	Lintels, beams, girders, bresummers, cantilevers etc.	52.53	sq.m		

NAME OF THE WORK : CONSTRUCTION OF KITCHEN CUM STORE AND TWO  
UNIT PF TOILET

LOCATION : ROYAL GUEST HOUSE, GELEPHU

**BILL OF QUANTITIES**

SL.#	DESCRIPTION	QTY	UNIT	RATE	AMOUNT
C	Columns, pillars, post, struts etc.	51.84	sq.m		
	Bhutan type Traditional Cornices in R.C.C 1:2:4, 20 mm aggregate including cost of formwork including finishing with 6mm thick plaster on the exposed surface with cement mortar 1:3, excluding reinforcement & decorative painting cost as per standard design (Measurement to be taken along the cornice and wall junction)	11.40	m		
12.00	Single Storied building, including Phana	11.40	m		
13.00	Lintel cornice (only cornice portion at external face)	9.73	m		
14.00	Providing & laying cement concrete flooring 1:3:6, finished with a floating coat of neat cement 20mm aggregates 50mm	25.50	sq.m		
15.00	Providing & fixing white/ coloured Glazed tiles, 150 x 150 mm in skirting, step risers, dado, finished with flushpointing in white cement	39.07	sq.m		

NAME OF THE WORK : CONSTRUCTION OF KITCHEN CUM STORE AND TWO  
UNIT PF TOILET

LOCATION : ROYAL GUEST HOUSE, GELEPHU

**BILL OF QUANTITIES**

SL.#	DESCRIPTION	QTY	UNIT	RATE	AMOUNT
16.00	Providing & fixing in position dressed wood work in frames of doors, windows, clerestory windows and other frames, wrought and framed Mixed Conifer	0.06	cum		
17.00	Providing & fixing joists, including hoisting, applying wood preservative on unexposed surfaces Mixed Conifer	0.51	cum		
18.00	Providing & fixing Eaves board (225x25mm) with moulding fitted and fixed with necessary screws Mixed Conifer incl.wood preservatives	33.06	m		
19.00	Providing & fixing Plywood lining with necessary nails etc. including beading complete (excluding cost of frame) 6 mm, commercial including painting works	53.84	sq.m		
20.00	Providing and fixing Aluminium frame window with sliding shutter including cost of 4mm glass including security bars				
A	W4	2.00	each		
B	W3	1.00	each		

NAME OF THE WORK : CONSTRUCTION OF KITCHEN CUM STORE AND TWO  
UNIT PF TOILET

LOCATION : ROYAL GUEST HOUSE, GELEPHU

**BILL OF QUANTITIES**

SL.#	DESCRIPTION	QTY	UNIT	RATE	AMOUNT
21.00	Providing & fixing Flush Door shutters (pre-fabricated), block-board core with commercial ply veneer 30mm	3.78	sq.m		
22.00	Providing & fixing M.S. pressed butt hinges with necessary screws etc. complete 100mm	8.00	each		
23.00	Providing & fixing M.S tower bolt (barrel type) with necessary screws etc. complete 250mm	4.00	each		
	Providing & fixing M.S tower bolt (barrel type) with necessary screws etc. complete 250mm	2.00	each		
24.00	Providing & fixing M.S. handle with necessary screws etc. complete 150mm	4.00	each		
25.00	P&f 40x3mm M.S. hold fast 400mm long, fixing to frame with 10mm bolts & nuts, plugs, concrete blocks 300x100x150mm with 1:3:6, 20mm aggregate	8.00	each		
26.00	Providing and laying 50mm thick Plinth Protection and grouted with fine sand mix including well rammed, finishing the top smooth With cement concrete 1:3:6, 20mm aggregates, laid over 75mm thick layer of compacted gravel (40mm)	19.84	sq.m		

NAME OF THE WORK : CONSTRUCTION OF KITCHEN CUM STORE AND TWO  
UNIT PF TOILET

LOCATION : ROYAL GUEST HOUSE, GELEPHU

**BILL OF QUANTITIES**

SL.#	DESCRIPTION	QTY	UNIT	RATE	AMOUNT
27.00	Constructing second class brick masonry open surface drain in cement mortar 1:4 including earth work in excavation 100 mm thick concrete bed 1:5:10, 40mm aggregate and 25mm thick cement concrete 1:2:4, 12 mm aggregate for filling haunches including 12mm cement plastering 1:4 with a floating coat of neat cement and disposal of surplus earth etc. complete 150mm x 200mm depth	36.06	m		
28.00	Steel work welded, in built up sections, trusses, frame-works including cutting, hoisting, fixing and appl. priming coat of red In Tubular sections	716.74	kg		
29.00	Providing & fixing Pre Painted Steel Corrugated Roofing sheets, including bolts, hooks and nuts 8mm dia. with bitumen and G.I limpet washers filled with white lead for connection, excluding the cost of purlins, rafter and trusses. 25g (0.50mm)	136.76	s q.m		
30.00	Providing & fixing 600mm ridges or hips in Pre Painted Steel sheets, including bolts, hooks and nuts 8mm dia G.I limpet and bitumen washers for connection 25g. (0.50mm).	10.13	m		
31.00	Providing & fixing G.I. pipes including G.I. fittings & clamps & repair walls 15mm	18.00	m		
32.00	Providing & fixing Kitchen Sinks including all connections and fittings Stainless steel, 940 x 460 x 160 mm, single bowl & drainboard 2188.59	2.00	each		

NAME OF THE WORK : CONSTRUCTION OF KITCHEN CUM STORE AND TWO  
UNIT PF TOILET

LOCATION : ROYAL GUEST HOUSE, GELEPHU

**BILL OF QUANTITIES**

SL.#	DESCRIPTION	QTY	UNIT	RATE	AMOUNT
33.00	Providing & fixing Electric water heater including necessary fittings 35 litres	1.00	each		
34.00	Providing & fixing c.p. brass mixers, 15mm For basin, single-hole, casted spout	2.00	each		
35.00	Providing & fixing P.V.C door bend 75mm dia	1.00	each		
36.00	Providing & fixing P.V.C soil waste and vent pipes, single or double socketed, including pipe clip complete (excluding the cost of PVC fittings) 75mm dia	6.00	m		
37.00	Providing & applying one coat of primers Cement primer	139.18	sq.m		
38.00	Providing & applying white or colour washing White washing with lime-new work-three coats	139.18	sq.m		
39.00	Finishing wall with Water-Proof Cement Paint New work, three coats	139.18	sq.m		

NAME OF THE WORK : CONSTRUCTION OF KITCHEN CUM STORE AND TWO  
UNIT PF TOILET

LOCATION : ROYAL GUEST HOUSE, GELEPHU

**BILL OF QUANTITIES**

SL.#	DESCRIPTION	QTY	UNIT	RATE	AMOUNT
40.00	Providing, preparing and applying Sumdang washable painting Ding	2.43	sq.m		
41.00	providing and fixing two leaf shelf windows with two brass handles and 4mm glass in wooden frame incl.necessary fittings(500mm*500mm)	16.00	each		
		<b>TOTAL AMOUNT</b>			



**NAME OF WORK : CONSTRUCTION OF 2 UNIT PF TOILET****LOCATION : ROYAL GUEST HOUSE,GELEPHU****BILL OF QUANTITIES**

#	DESCRIPTION OF ITEMS	QTY	UNIT	RATE	AMOUNT
1	Earth work in excavation over areas and transportation of excavated soil within 50 to 100m away from the site in ordinary soil	2.57	Cu.m		
2	Excavation in foundation trenches or drains not exceeding 1.5m in width or area 10 sq.m on plan, including dressing & ramming, disposal of surplus soil within 50m lead & 1.5m lift in ordinary soil.	17.75	Cu.m		
3	Providing and laying Hand packed stone filling or soling with stones	7.14	Cu.m		
4	Providing and laying in position plain cement concrete excluding the cost of centering and shuttering - All work upto plinth level. 1:3:6 (1 cement : 3 sand : 6 graded crushed rock 20 mm nominal size)	4.76	CUM		
5	P & l cement concrete flooring 1:2:4, finished with floating coat of neat cement. 20mm aggregates, 50mm thick	0.55	Sq.m		
6	Providing & laying Random Rubble Masonry with hard stone in foundation & plinth In cement mortar 1:5	7.63	Cu.m		
7	Filling of trenches, side of foundation etc.	22.40	Cu.m		
8	Providing and laying damp-proof course with cement concrete 1:2:4, 12.5mm aggregate. 40mm thick	6.03	Sq.m		



**NAME OF WORK : CONSTRUCTION OF 2 UNIT PF TOILET****LOCATION : ROYAL GUEST HOUSE,GELEPHU****BILL OF QUANTITIES**

#	DESCRIPTION OF ITEMS	QTY	UNIT	RATE	AMOUNT
9	Providing & laying concrete block brick in Foundation & Plinth up to floor two level In cement mortar 1:4	6.95	Cu.m		
11	Providing & fixing centering and shuttering (formwork), including strutting, propping etc. and removal of formwork in Lintels beams.	3.14	Sq.m		
12	Providing & fixing Thermo-Mechanically Treated reinforcement bar (Yield Strength 415 MPa) for R.C.C work including cutting, bending, binding and placing in position complete	112.2	kg		
13	Providing & laying in position reinforced cement concrete work in beams, lintels, bands, upto floor five level excluding the cost of centering, shuttering and reinforcement (1:2:4 (1 cement : 2 sand : 4 graded crushed rock 20 mm nominal size)	1.46	Cu.m		
14	Providing & fixing in position dressed wood work in frames of doors, windows, clerestory windows and other frames, wrought and framed (Mixed Conifer )	0.16	Cu.m		
15	Providing & fixing 38mm thick louvered ventilation shutters with fixed 12mm venetians in mixed conifer including the cost of hinges etc.	0.4	Sq.m		
16	Providing & fixing Flush Door shutters (pre-fabricated), block-board core with commercial ply veneer 30mm	6.46	Sq.m		
17	Providing & fixing joists, including hoisting, applying wood preservative on unexposed surfaces Mixed Conifer	0.06	cum		

**NAME OF WORK : CONSTRUCTION OF 2 UNIT PF TOILET**

**LOCATION : ROYAL GUEST HOUSE,GELEPHU**

**BILL OF QUANTITIES**

#	DESCRIPTION OF ITEMS	QTY	UNIT	RATE	AMOUNT
18	Providing & fixing Plywood lining with necessary nails etc. including beading complete (excluding cost of frame) 6 mm, commercial including painting works	5.53	Sq.m		
19	Providing & fixing roof framing, in trusses, purlins, rafters, posts, post plates including hoisting, etc. wood including preservatives	0.17	cum		
20	Providing and fixing CRIL (Cloured Roof India) trapezoids Prepainted Iron(PPI) sheet incl bolts hooks and nuts 8mm dia. With bitumen washers and GI lempet washer filled with white lead for connection, excl the cost of rafter and purlin -0.45mm	16.81	Sq.m		
21	Providing & fixing Eaves board (225x25mm) with moulding fitted and fixed with necessary screws-Mixed conifer	16.40	mtr		
22	Providing & laying 20mm cement plaster on rough side of single or half-brick wall in C.M 1:4(floating coat for water reservior )	46.72	Sq.m		
23	P/a acrylic washable distemper two coats on new work incl, cement primer coat complete.	41.96	cum		
24	Providing and laying 50mm thick plinth protection and grouted with fine sand mix incl. Well rammed, finishing the top smooth: With cement concrete 1:3:6, 20mm agg laid over 75mm thick layer of compacted gravel (40mm)	8	sq.m		

**NAME OF WORK : CONSTRUCTION OF 2 UNIT PF TOILET**

**LOCATION : ROYAL GUEST HOUSE,GELEPHU**

**BILL OF QUANTITIES**

#	DESCRIPTION OF ITEMS	QTY	UNIT	RATE	AMOUNT
25	Constructing random rubble masonry open surface drain in cement mortar 1:6 including earth work in excavation, 100mm thick concrete base 1:5:10, 40 mm aggregate 25mm thick cement concrete 1:2:4, 12mm aggregate for filling haunches, including 20mm cement plaster with a floating coat of neat cement, disposal of surplus earth. 100mm X 200mm depth	26.8	mtr		
26	P&f. M/S. tower bolt (barrel type) with necessary screws etc. complete: 150mm for doors	3	Nos		
27	P&f.M/S. sliding door bolt with nuts necessary screws etc. complete: 300mm	3	Nos		
28	P&f. M.S handle with necessary screws etc. complete: 150mm	6	Nos		
29	Constructing Soak Pit having -Size 1200x1200x1200mm, filled with brick bats including 100mm SW drain pipe X 1200mm long	1.00	each		
30	Constructing Septic Tanks, in R.R Masonry in cement mortar 1:6, including fittings, C.I cover with frame, 40mm thick concrete flooring (40mm aggregates) cement plaster concrete base in C.C 1:4:8 etc. complete as per standard design complete as per standard <b>design attached for 25users</b>	1.00	each		
31	Providing and fixing PVC soil waste and vent pipes , single or double socketed incldg pipe clip complete 75mm dia.	2	mtr		

**NAME OF WORK : CONSTRUCTION OF 2 UNIT PF TOILET**

**LOCATION : ROYAL GUEST HOUSE,GELEPHU**

**BILL OF QUANTITIES**

#	DESCRIPTION OF ITEMS	QTY	UNIT	RATE	AMOUNT
32	Providing and fixing PVC soil waste and vent pipes , single or double socketed incldg pipe clip complete ,110mm.	10	mtr		
33	Providing and fixing PVC pipe connectors 110mm dia.	6	Each		
34	Providing and fixing PVC door bend 110mm dia.	6	Each		
35	Providing and fixing PVC plain 110mm dia.	6	Each		
36	Providing and fixing Indian type vitreous china WC squatting pan , 500mm , white.	2	Each		
37	Providing and fixing white vitreous china foot rest (250x130x30) for Indian WC.	2	Pair		
38	Providing & laying H.D.P.E pipes, pressure class 10kg/sq.m, including H.D.P.E fittings (excluding trenching, refilling & thrust block) and pipe trenching work: 25mm.	20	mtr		
39	Providing and laying 15mm GI pipes including G.I fittings	12	mtr		

NAME OF WORK : CONSTRUCTION OF 2 UNIT PF TOILET

LOCATION : ROYAL GUEST HOUSE,GELEPHU

**BILL OF QUANTITIES**

#	DESCRIPTION OF ITEMS	QTY	UNIT	RATE	AMOUNT
40	Providing & fixing c.p. brass bibcock 15mm, standard vertical, c.p knob	2	Each		
41	Anodised Aluminium Fittings: Kicking Plate 4mm thick	2.24	Sq.m		
42	Bhutan type Traditional Cornices in R.C.C 1:2:4, 20 mm aggregate including cost of formwork including finishing with 6mm thick plaster on the exposed surface with cement mortar 1:3, excluding reinforcement & decorative painting cost as per standard design (Measurement to be taken along the cornice and wall junction)	2.80	mtr		
		TOTAL			

ELECTRICAL WORKS					
SL.NO.	DISCRIPTION OF ITEMS	QNTY.	UNIT	RATE	AMOUNT
<b>A</b>	<b>ELECTRIFICATION OF KITCHEN</b>				
<b>a</b>	<b>POINTS</b>				
	Wiring for light, fans, call bell and 2 pin light socket outlet with 1.5 sq.mm 1.1kV grade, PVC insulated copper conductor cable in conceled HDPE pipe including connections, painting, testing and commissioning etc. as required				
1	Short point	6	point		
2	Medium point	5	point		
3	Long Point	2	point		
	Wiring for 3/5 pin, 6 ampere plug point with 2.5 sq.mm 1.1kV grade, PVC insulated copper conductor cable in conceled HDPE pipe including, connections, painting, testing and commissioning etc. as required				
4	Short point	1	point		
5	Medium point	1	point		
6	Long Point	1	point		
	Wiring for 3 pin, 6/16 ampere plug point with 4 sq.mm 1.1kV grade, PVC insulated copper conductor cable in concealed HDPE pipe including, connections, painting, testing and commissioning etc. as required				
7	Short point	2	point		
8	Medium point	4	point		
9	Long Point	2	point		
	Supplying of 2- Core 1.1KV grade PVC insulated and sheathed Copper conductor armoured power cables				
11	16 sq.mm	30	m		
<b>b</b>	<b>SWITCHES AND SOCKETS</b>				
	Supplying & fixing of socket combined, shuttered on existing PVC moulded tough surface box with fibre sheet cover including necessary cutting, connection testing etc. as required.				
1	5/6 pin, 6/16A	8	each		
	Supplying & fixing of socket outlet on existing PVC /metal/ moulded tough surface box/ metal box (recessed or surface) including necessary cutting, connection testing etc. as required.				
	3-pin, 6A socket outlet, shuttered	2	each		

	Supplying & fixing of switch/socket on existing metal box with fibre sheet cover (recessed or surface)/ junction box (PVC/metal) including necessary cutting, connection testing etc.				
2	6 Amps, SP, 1-way	15	each		
3	Ceiling Rose, 2 plate (PVC) 6A	10	each		
	Supplying & fixing of socket/regulator on existing wooden board including necessary cutting, connection testing etc. as required.				
4	Dimmer/regulator	3	each		
<b>c</b>	<b>FITTINGS</b>				
	Supplying of ceiling fan 240 volt A.C 1400 rpm with all accessories such as down rod, sweep 3 Nos.,canopy 2 Nos., condenser and fan body etc. complete as required				
1	1400mm sweep	3	each		
	Supplying of prewired indoor fluorescent lamp luminaries housing of CRCA sheet steel rail, end with lamp holders, copper wound ballast, starter, starter holder, terminal block etc. but without lamp, LPF suitable for wall and ceiling.Phillips/Bajaj				
2	Strip Rail 36/40 watt	6	each		
3	TLF lamp 36/40 watt	6	each		
	Supplying & fixing on existing PVC/wooden /metal/moulded tough surface box with fibre sheet cover,round block, junction box (recessed or surface) including necessary cutting, connection testing etc. as required.				
4	Angle holder (heavy duty, brass plunger)	3	set		
5	27W (BC/ES), CFL Lamp	3	each		
	Supplying of exhaust fan 240 volt A.C 900 rpm with all accessories such as frame with arm 3 Nos., sweep 3 Nos., condenser and fan body etc. complete as required				
	450mm sweep	1	each		
<b>d</b>	<b>METAL BOXES</b>				
	Supplying & fixing of metal boxes for switch/socket outlet/switch socket combined/ gang switches on surface including painting etc as required				
3	3 module	1	each		
6	8 Module(Square)	1	each		
7	12 module	1	each		
	SPN DB, 230 volt A.C, with metal door(double door)				
12	12 Way	1	each		

	Supplying & fixing of wooden boxes including painting etc for bistribution box with chicken wire mess shutter panel having locking arrangement,				
14	450x450x38mm	1	each		
e	<b>CONTROL GEARS</b>				
	Supply of loadkontak isolator double pole, 230 volt A.C complete with all accessories suitable to fix on a din-bar etc. as required				
1	63A	1	each		
	Supply of miniature circuit breaker (MCB) single pole, 230 volt A.C complete with all accessories suitable to fix on a din-bar etc. as required				
2	6A	2	each		
4	16 A	8	each		
f	<b>INSTALLATION</b>				
	Installation, testing and commissioning of all size ceiling fan and regulator including wiring the down rod of standard length upto 300mm with PVC insulated copper conductor				
1	With 1.5 sq.mm single core cable 1.1 KV grade	4	each		
	Installation, testing and commissioning of prewired fluorescent fittings of all surface type complete with all accessories and tubes directly on ceiling/wall as required including connection with PVC insulated copper conductor				
2	With 1.5 sq.mm single core cable 1.1 KV grade	6	each		
	Installation, testing and commissioning of SPN DB (DIN type, horizontal/vertical) with no door, metal door or arcylic door (double/single door) complete with all accessories to accommodate incoming RCCB DP 16/25A sensitivity 30/100/300mA and outgoing SP MCB 6/10/16A on/in prefabricated MS surface/MS cubical control panel board including drilling holes, connections etc. as required				
6	12 Way	1	each		
	Installation, testing and commissioning of SPN/DP miniature circuit breaker DIN type complete with all accessories to accommodate on/in prefabricated MS surface /MS cubical control panel board including drilling holes, connections etc as required				
7	6/10/16/20A	10	each		
9	50/63A	1	each		



<b>g</b>	<b>PROTECTIONS AND EARTHING</b>				
	Providing and fixing of earthing including all accessories, machinery enclosure, C.I cover plate having locking arrangement, watering pipe with excavation and refilling work including charcoal or coke and salt complete as required as per standard earthing drawing				
1	With G.I earth plate 600x600x6mm	1	each		
3	6 SWG G.I wire	2	Kg		
6	in consultant with the norms of the Bhutan Power Cooperation(BPC)		each		
	<b>TOTAL</b>				
<b>B</b>	<b>ELECTRIFICATION OF 2 UNIT TOILET</b>				
<b>a</b>	<b>POINTS</b>				
	Wiring for light, fans, call bell and 2 pin light socket outlet with 1.5 sq.mm 1.1kV grade, PVC insulated copper conductor cable in PVC casing and capping including connections, painting, testing & commissioning etc., as required.				
1	Short point	4	point		
2	Medium point	1	point		
	Wiring for 3/5 pin, 6 ampere plug point with 2.5 sq.mm 1.1kV grade, PVC insulated copper conductor cable in PVC casing & capping with providing and fixing 3/5 pin, 6 ampere socket outlet and switch including earthing the third pin, connections, painting, testing and commissioning etc. as required				
4	Short point	2	point		
	Supplying of 2- Core 1.1KV grade PVC insulated and sheathed Copper conductor armoured power cables				
6	10 sq.mm	20	m		
	Extra for laying of one number additional PVC insulated & sheathed power cable copper/aluminium, armoured 1.1KV single core to four core direct in the ground in the same trench in one tier horizontal formation including excavation, sand cushioning, protective covering and refilling the trenches etc. as required				
7	Above 6sq.mm to 25sq.mm	20	m		
<b>b</b>	<b>SWITCHES AND SOCKETS</b>				
	Supplying & fixing of switch/socket on existing metal box with fibre sheet cover (recessed or surface)/ junction box (PVC/metal) including necessary cutting, connection testing etc. ROMA or equivalent				

1	6 Amps, SP, 1-way	5	each		
<b>c</b>	<b>FITTINGS</b>				
	Supplying & fixing on existing PVC/wooden /metal/moulded tough surface box with fibre sheet cover,round block, junction box (recessed or surface) including necessary cutting, connection testing etc. as required.				
1	Angle holder (heavy duty, brass plunger)	3	each		
2	27W (BC/ES), CFL Lamp	3	each		
3	11W (BC/ES), CFL Lamp	2	each		
	Supplying of prewired outdoor bulk head fittings luminaries having die cast aluminium body, prismatic heat resistant glass cover held in the weather proof gasket, MS galvanised wire guard, etc. suitable for GLS, CFL & LED lamps for wattage upto 1x100/1x60 watts complete with all accessories such as base, holder,glass, reflector, louvered, etc. complete but without lamp				
4	Projection 100mm, height 220mm, width 125mm, finish-painted, 1x60/100W	2	each		
<b>d</b>	<b>BOXES</b>				
	Supplying & fixing of PVC modular boxes for switch/socket outlet/switch socket combined/ gang switches on surface including painting etc as required, ROMA or equivalent				
1	3 module	1	each		
2	2 module	1	each		
	SPN DB, 230 volt A.C, with metal door(double door)				
3	4 Way	1	each		
<b>e</b>	<b>CONTROL GEARS</b>				
	Supply of loadkontak isolator double pole, 230 volt A.C complete with all accessories suitable to fix on a din-bar etc. as required				
1	63A	1	each		
	Supply of miniature circuit breaker (MCB) single pole, 230 volt A.C complete with all accessories suitable to fix on a din-bar etc. as required				
2	6A	2	each		
<b>f</b>	<b>INSTALLATION</b>				

	Erection of all indoor/outdoor surface type wall bracket (single or double)/ surface ceiling fittings GLS lamps/ bulk head GLS lamp / all types call bell / all type picture or mirror lighting luminaries fittings with all accessories, fixing of lamp, testing etc. as required including connection with PVC insulated copper conductor				
1	With 1.5 sq.mm single core cable 1.1 KV grade	2	each		
	Installation, testing and commissioning of SPN DB (DIN type, horizontal/vertical) with no door, metal door or arcylic door (double/single door) complete with all accessories to accommodate incoming RCCB DP 16/25A sensitivity 30/100/300mA and outgoing SP MCB 6/10/16A on/in prefabricated MS surface/MS cubical control panel board including drilling holes, connections etc. as required				
2	4 Way	1	each		
	Installation, testing and commissioning of SPN/DP miniature circuit breaker DIN type complete with all accessories to accommodate on/in prefabricated MS surface /MS cubical control panel board including drilling holes, connections etc as required				
3	6/10/16/20A	2	each		
4	50/63A	1	each		
	<b>TOTAL</b>				
<b>TOTAL COST FOR ELECTRICAL WORK-(A+B)</b>					

**Name of Work: Construction of Elevated water tank for Kitchen cum Store and Two Unit PF Toilet**

**Location: Royal Guest House, Gelephu**

**BILL OF QUANTITIES**

#	Items Description	Quantity	Unit	Rate	Amount
<b>SITE DEVELOPMENT WORKS(ELEVATED WATER TANK )</b>					
1	Excavation in foundation trenches or drains not exceeding 1.5m in width or area 10 sq.m on plan, including dressing & ramming, disposal of surplus soil within 50m lead & 1.5m lift-ordinary soil	4.400	Cu.m		
2	Providing and laying in position plain cement concrete 1:3:6 (1 cement : 3 sand : 6 graded crushed rock 20 mm nominal size) excluding the cost of centering and shuttering - All work upto plinth level.	0.400	Cu.m		
3	Filling of trenches, sides of foundations etc. in layers <200mm using selected excavated earth, ramming etc. within lead 50 m & lift 1.5m	2.548	Cu.m		
4	Providing & laying in position reinforced cement concrete excluding the cost of centering, shuttering and reinforcement - all work of the stage -1:1.5:3 (1 cement : 1.5 sand : 3 graded crushed rock 20 mm nominal size)	2.758	Cu.m		
5	Providing & fixing Thermo-Mechanically Treated reinforcement bar (Yield Strength 500 MPa) for R.C.C work including cutting, bending, binding and placing in position complete	314.352	kg		
6	Providing & fixing centering and shuttering (formwork), including strutting, propping etc. and removal of formwork(all work of the platform)	50.703	Sqm		
7	Providing & laying 12mm cement plaster- in 1:4 CM	30.320	Sq.m		
8	Providing & fixing plastic tank including all accessories complete- 2000 lits capacity with bib cocks and all fittings with inlet and outlet, wash out pipes	1.000	Each		

9	Providing & fixing G.I. pipes including G.I. fittings & clamps & repair walls-25mm	18.000	m		
10	Providing & laying H.D.P.E Pipes, 6 PN, including H.D.P.E fittings (excluding trenching, refilling & thrust block)32mm	60.000	m		
		<b>TOTAL</b>			

